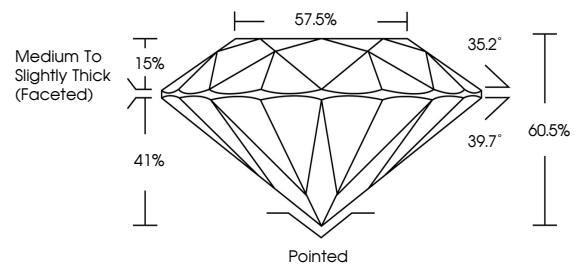




LG502193914

LABORATORY GROWN DIAMOND REPORT

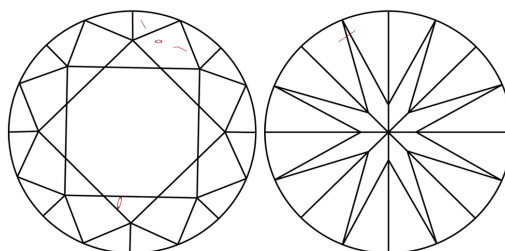
PROPORTIONS



GRADING SCALES

COLOR GRADING SCALE	CL	NC	FT	VL	LT	
	COLORLESS D-F	NEAR COLORLESS G-J	FAINT K-M	VERY LIGHT N-R	LIGHT S-Z	
CLARITY (10x) GRADING SCALE	FL	IF	VVS	VS	SI	I
	FLAWLESS INTERNALLY FLAWLESS	VERY VERY SLIGHTLY INCLUDED	VERY SLIGHTLY INCLUDED	SLIGHTLY INCLUDED	INCLUDED	

CLARITY CHARACTERISTICS



KEY TO SYMBOLS

Red symbols indicate internal characteristics.
Green symbols indicate external characteristics.

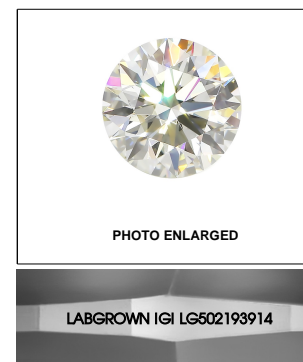


PHOTO ENLARGED

LABGROWN IGI LG502193914

LASERSCRIBESM

November 18, 2021

IGI Report Number **LG502193914**

Description **LABORATORY GROWN DIAMOND**

Shape and Cutting Style **ROUND BRILLIANT**

Measurements **5.89 - 5.93 X 3.58 MM**

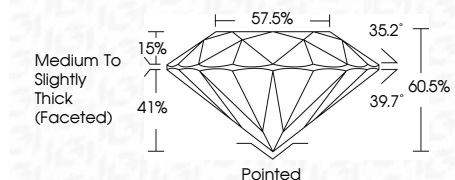
GRADING RESULTS

Carat Weight **0.79 CARAT**

Color Grade **D**

Clarity Grade **VS 2**

Cut Grade **GOOD**



ADDITIONAL GRADING INFORMATION

Polish **EXCELLENT**

Symmetry **VERY GOOD**

Fluorescence **NONE**

Inscription(s) **LABGROWN IGI LG502193914**

Comments: This Laboratory Grown Diamond was created by High Pressure High Temperature (HPHT) growth process Type II

November 18, 2021

IGI Report Number **LG502193914**

Description **LABORATORY GROWN DIAMOND**

Shape and Cutting Style **ROUND BRILLIANT**

Measurements **5.89 - 5.93 X 3.58 MM**

GRADING RESULTS

Carat Weight **0.79 CARAT**

Color Grade **D**

Clarity Grade **VS 2**

Cut Grade **GOOD**

ADDITIONAL GRADING INFORMATION

Polish **EXCELLENT**

Symmetry **VERY GOOD**

Fluorescence **NONE**

Inscription(s) **LABGROWN IGI LG502193914**

Comments: This Laboratory Grown Diamond was created by High Pressure High Temperature (HPHT) growth process Type II



IGI

November 18, 2021	IGI Report No. LG502193914	0.79 CARAT	D	Pointed
ROUND BRILLIANT	5.89 - 5.93 X 3.58 MM	VS 2	GOOD	EXCELLENT
Carat Weight	57.5%	60.5%	39.7°	VERY GOOD
Color Grade	Medium To Slightly Thick (Faceted)	41%	15%	NONE
Clarity Grade	LABGROWN IGI LG502193914	35.2°	60.5%	INSCRIPTION(S)
Cut Grade	LABGROWN IGI LG502193914	39.7°	60.5%	Comments: This Laboratory Grown Diamond was created by High Pressure High Temperature (HPHT) growth process Type II
Culet				
Polish				
Symmetry				
Fluorescence				
Inscription(s)				