



ELECTRONIC COPY

LABORATORY GROWN DIAMOND REPORT

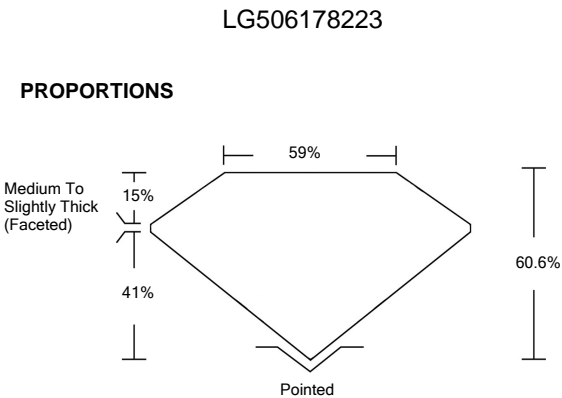
LABORATORY GROWN DIAMOND REPORT

December 3, 2021	
IGI Report Number	LG506178223
Description	LABORATORY GROWN DIAMOND
Shape and Cutting Style	OVAL BRILLIANT
Measurements	8.66 X 6.29 X 3.81 MM
GRADING RESULTS	
Carat Weight	1.35 CARAT
Color Grade	E
Clarity Grade	VS 1

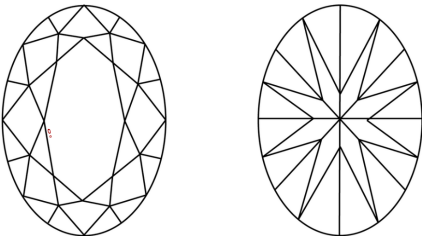
ADDITIONAL GRADING INFORMATION

Polish	EXCELLENT
Symmetry	EXCELLENT
Fluorescence	NONE
Inscription(s)	LABGROWN IGI LG506178223

Comments: As Grown - No indication of post-growth treatment.
This Laboratory Grown Diamond was created by High Pressure High Temperature (HPHT) growth process.
Type II



CLARITY CHARACTERISTICS



KEY TO SYMBOLS

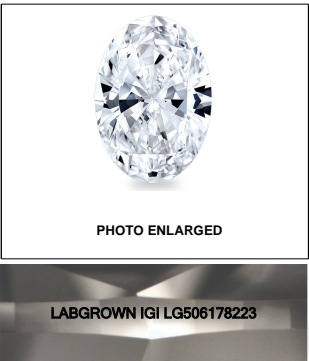
Red symbols indicate internal characteristics.
Green symbols indicate external characteristics.

GRADING SCALES

COLOR GRADING SCALE	CL		NC		FT		VLT		LT	
	COLORLESS D-F		NEAR COLORLESS G-J		FAINT K-M		VERY LIGHT N-R		LIGHT S-Z	
CLARITY (10x) GRADING SCALE	FL	IF	VVS		VS		SI		I	
	FLAWLESS		VERY VERY SLIGHTLY INCLUDED		VERY SLIGHTLY INCLUDED		SLIGHTLY INCLUDED		INCLUDED	

The laboratory grown diamond described in this Report (Report) has been graded, tested, analyzed, examined and/or inscribed by International Gemological Institute (IGI). A laboratory grown diamond is one that has essentially the same chemical, physical and optical properties as a natural diamond. IGI is a company owned and operated by a man (a manufactured product). IGI employs and utilizes those techniques and equipment currently available to IGI, including, without limitation, 10X magnification, corrected triple beam, binocular microscope, color color comparison stones, non-contrast lighting, and other laboratory equipment. IGI does not use any of the same instruments and/or processes as deemed appropriate by IGI. This Report includes advanced security features. A duly accredited gemologist or jeweler can advise you with relevance the importance of and interrelationship between cut, color, clarity and carat weight.

THIS REPORT IS NEITHER A GUARANTEE, VALUATION, NOR APPRAISAL OF THE GEMSTONE DESCRIBED HEREIN. PLEASE REVIEW THE LIMITATIONS AND RESTRICTIONS SET FORTH ONLINE FOR THIS REPORT. PLEASE SEE THE LIMITATIONS AND DISCLAIMERS, PLEASE GO TO WWW.IGI.ORG OR CALL 1-888-BUY-IGI.

**LASERSCRIBESM**

© IGI 2020, International Gemological Institute

FD - 10 20

www.igi.org



IGI

	GIA Report No LG60879223	
December 3, 2021	OVAL BRILLIANT	
	Carat Weight Color Grade Clarity Grade	1.35 CARAT E VS 1
	Measurements Table Depth	6.85 X 6.25 X 3.51 MM 5% 60.6%
	Symmetry Finish Polish	Medium To Slightly Thick (Faceted) Excellent EXCELLENT
	Fluorescence Inscriptions(s)	NONE LAB-GROWN (GI LG60879223)
	Comments:	
	<div>As Grown - No indication of post-growth treatment.</div> <div>This Laboratory Grown Diamond was created by a high pressure high temperature (HPHT) process.</div> <div>Type II</div>	

As Grown - No indication of post-growth treatment.
This Laboratory Grown Diamond was created by High Pressure High Temperature (HPHT) growth process.
Type II