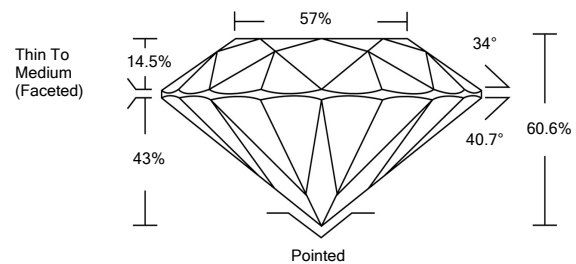




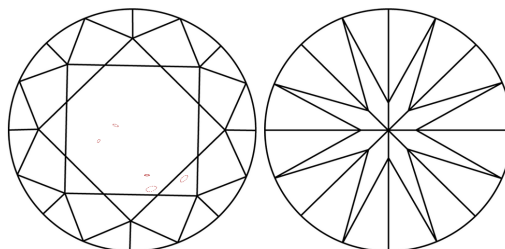
LG506196017

LABORATORY GROWN DIAMOND REPORT

PROPORTIONS

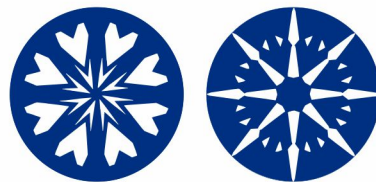


CLARITY CHARACTERISTICS



KEY TO SYMBOLS

Red symbols indicate internal characteristics.
Green symbols indicate external characteristics.



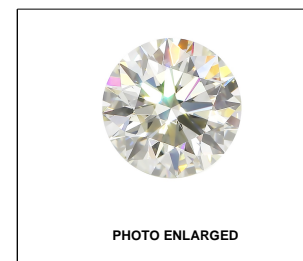
GRADING SCALES

COLOR GRADING SCALE	CL	NC	FT	VL	LT	
	COLORLESS D-F	NEAR COLORLESS G-J	FAINT K-M	VERY LIGHT N-R	LIGHT S-Z	
CLARITY (10X) GRADING SCALE	FL	IF	VVS	VS	SI	I
	FLAWLESS INTERNALLY FLAWLESS	VERY VERY SLIGHTLY INCLUDED	VERY SLIGHTLY INCLUDED	SLIGHTLY INCLUDED	INCLUDED	

The laboratory grown diamond described in this Report (Report) has been graded, tested, analyzed, examined and/or inscribed by International Gemological Institute (IGI). A laboratory grown diamond is one that has essentially the same chemical, physical and optical properties as a mined diamond, with the exception of being grown by man (a manufactured product). IGI employs and utilizes those techniques and equipment currently available to IGI, including, without limitation, 10X magnification, corrected triplet loupe, binocular microscope, master color comparison stones, non-contact-optical measuring device, Diamond Sure™, Diamond View™, Spectrophotometer and such other instruments and/or processes as deemed appropriate by IGI. This Report includes advanced security features. A duly accredited gemologist or jeweler can advise you with respect to the importance of and interrelationship between cut, color, clarity and carat weight.

THIS REPORT IS NEITHER A GUARANTEE, VALUATION, NOR APPRAISAL OF THE GEMSTONE DESCRIBED HEREIN. PLEASE REVIEW THE LIMITATIONS AND RESTRICTIONS SET FORTH ONLINE. FOR ADDITIONAL INFORMATION, IMPORTANT LIMITATIONS AND DISCLAIMERS, PLEASE GO TO WWW.IGI.ORG OR CALL 1-888-BUY-IGI.

© INTERNATIONAL GEMOLOGICAL INSTITUTE, INC.



LABGROWN IGI LG506196017

LASERSCRIBESM

December 9, 2021

IGI Report Number

LG506196017

Description

**LABORATORY GROWN
DIAMOND**

Shape and Cutting Style

ROUND BRILLIANT

Measurements

6.88 - 6.92 X 4.18 MM

GRADING RESULTS

Carat Weight

1.20 CARAT

Color Grade

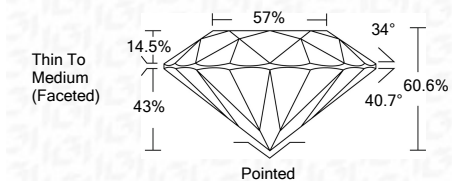
D

Clarity Grade

VS 2

Cut Grade

IDEAL



ADDITIONAL GRADING INFORMATION

Polish

EXCELLENT

Symmetry

EXCELLENT

Fluorescence

NONE

Inscription(s)

LABGROWN IGI LG506196017

Comments: HEARTS & ARROWS

As Grown - No indication of post-growth treatment.
This Laboratory Grown Diamond was created by High Pressure High Temperature (HPHT) growth process.
Type II



IGI

December 9, 2021	IGI Report No. LG506196017	1.20 CARAT	D	Pointed
ROUND BRILLIANT	6.88 - 6.92 X 4.18 MM	VS 2	IDEAL	EXCELLENT
Carat Weight	6.88 - 6.92 X 4.18 MM	VS 2	IDEAL	EXCELLENT
Color Grade	D	VS 2	IDEAL	EXCELLENT
Clarity Grade	VS 2	VS 2	IDEAL	EXCELLENT
Cut Grade	IDEAL	VS 2	IDEAL	EXCELLENT
Depth	60.6%	VS 2	IDEAL	EXCELLENT
Table	57%	VS 2	IDEAL	EXCELLENT
Girdle	Thin To Medium (Faceted)	VS 2	IDEAL	EXCELLENT
Culet	Pointed	VS 2	IDEAL	EXCELLENT
Polish	EXCELLENT	VS 2	IDEAL	EXCELLENT
Symmetry	EXCELLENT	VS 2	IDEAL	EXCELLENT
Fluorescence	NONE	VS 2	IDEAL	EXCELLENT
Inscriptions(s)	LABGROWN IGI LG506196017	VS 2	IDEAL	EXCELLENT

Comments: HEARTS & ARROWS
As Grown - No indication of post-growth treatment.
This Laboratory Grown Diamond was created by High Pressure High Temperature (HPHT) growth process.
Type II

