



# LABORATORY GROWN DIAMOND REPORT

December 10, 2021

IGI Report Number **LG506196266**

Description	LABORATORY GROWN DIAMOND
Shape and Cutting Style	PEAR BRILLIANT

Measurements	8.31 X 5.52 X 3.60 MM
--------------	-----------------------

## GRADING RESULTS

Carat Weight	1.00 CARAT
Color Grade	D
Clarity Grade	SI 1

### ADDITIONAL GRADING INFORMATION

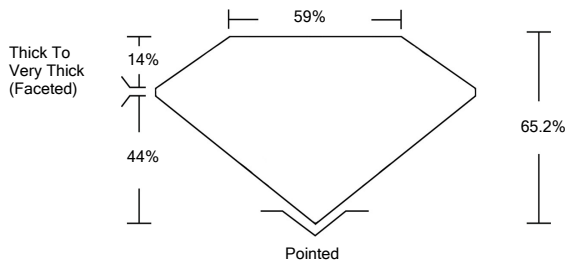
Polish	EXCELLENT
Symmetry	VERY GOOD
Fluorescence	NONE
Inscription(s)	LABGROWN IGI LG506196266

Comments: As Grown - No indication of post-growth treatment.  
This Laboratory Grown Diamond was created by High Pressure High Temperature (HPHT) growth process.  
Type II

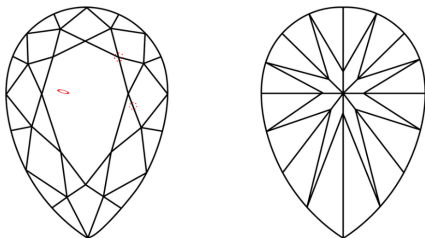
**ELECTRONIC COPY**

LG506196266

## PROPORTIONS



## CLARITY CHARACTERISTICS



## KEY TO SYMBOLS

Red symbols indicate internal characteristics.  
Green symbols indicate external characteristics.

# LABORATORY GROWN DIAMOND REPORT

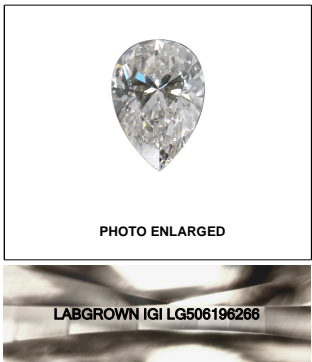
## GRADING SCALES

COLOR GRADING SCALE	CL		NC	FT	VLT	LT
	COLORLESS D-F		NEAR COLORLESS G-J	FAINT K-M	VERY LIGHT N-R	LIGHT S-Z
CLARITY (10x) GRADING SCALE	FL	IF	VVS	VS	SI	I
	FLAWLESS INTERNALLY FLAWLESS		VERY VERY SLIGHTLY INCLUDED	VERY SLIGHTLY INCLUDED	SLIGHTLY INCLUDED	INCLUDED

The laboratory grown diamond described in this Report (Report) has been graded, tested, analyzed, examined and/or inscribed by International Gemological Institute (I.G.I.). A laboratory grown diamond is one that has essentially the same chemical, physical and optical properties as a natural diamond. I.G.I. employs and utilizes those techniques and equipment currently available to I.G.I., including, without limitation, 10X magnification, corrected triplet loupe, binocular microscope, master color comparison stones, non-contact-optical spectrophotometer, diamond grading microscope, and other gemological instruments and/or processes as deemed appropriate by I.G.I. This Report includes advanced security features. A duly accredited gemologist or jeweler can advise you with respect to the importance of and interrelationship between cut, color, clarity and carat weight.

**THIS REPORT IS NEITHER A GUARANTEE, VALUATION, NOR APPRAISAL OF THE GEMSTONE DESCRIBED HEREIN. PLEASE CONSULT YOUR JEWELER FOR LIMITATIONS AND RESTRICTIONS SET FORTH ONLINE. FOR A COMPLETE LIST OF LIMITATIONS AND DISCLAIMERS, PLEASE GO TO [WWW.IGI.ORG](http://WWW.IGI.ORG) OR CALL 1-888-BUY-IGI.**

© INTERNATIONAL GEMOLOGICAL INSTITUTE, INC.

**LASERSCRIBE<sup>SM</sup>**

© IGI 2020, International Gemological Institute

FD - 10 20

**www.igi.org**

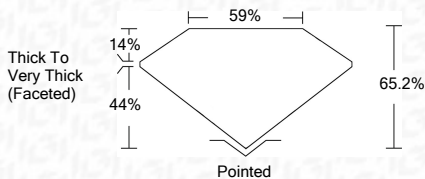
## LABORATORY GROWN DIAMOND REPORT

December 10, 2021	
IGI Report Number	LG506196266
Description	LABORATORY GROWN

Shape and Cutting Style	PEAR BRILLIANT
Measurements	8.31 X 5.52 X 3.60 MM

## GRADING RESULTS

Carat Weight	1.00 CARAT
Color Grade	D
Clarity Grade	SI 1



### ADDITIONAL GRADING INFORMATION

Polish	EXCELLENT
Symmetry	VERY GOOD
Fluorescence	NONE
Inscription(s)	LABGROWN IGI LG506196266

Comments: As Grown - No indication of post-growth treatment.  
This Laboratory Grown Diamond was created by High Pressure High Temperature (HPHT) growth process.  
Type II



December 10, 2021	IGI Report No. LGG56189206
PEAR BRILLIANT	
3.31 X 5.52 X 3.40 MM	1.00 CARAT
Carat Weight	D
Color Grade	S1
Clarity Grade	SI2
Depth	65.2%
Table	58%
Girdle	Thick To Very Thick (Faceted)
Culet	Pointed
Polish	EXCELLENT
Symmetry	VERY GOOD
Fluorescence	NONE
Inscriptions(s)	LABGROWN IGI LGG56189206
Comments:	As Grown - No indication of post-growth treatment. This Laboratory Grown Diamond was created by high pressure high temperature (HPHT) process. Type II

**As Grown - No Indication of post-growth treatment.**  
This Laboratory Grown Diamond was created by High Pressure High Temperature (HPHT) growth process.