



ELECTRONIC COPY

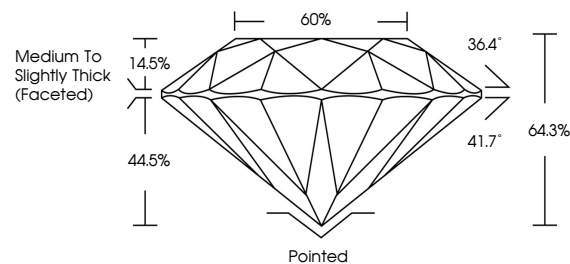
LABORATORY GROWN DIAMOND REPORT

December 23, 2021	
IGI Report Number	LG508124180
Description	LABORATORY GROWN DIAMOND
Shape and Cutting Style	ROUND BRILLIANT
Measurements	8.99 - 9.05 X 5.81 MM
GRADING RESULTS	
Carat Weight	3.00 CARATS
Color Grade	J
Clarity Grade	VS 1
Cut Grade	VERY GOOD
ADDITIONAL GRADING INFORMATION	
Polish	EXCELLENT
Symmetry	EXCELLENT
Fluorescence	NONE
Inscription(s)	LABGROWN IGI LG508124180

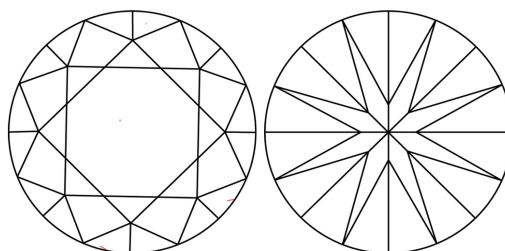
Comments:
This Laboratory Grown Diamond was created by Chemical Vapor Deposition (CVD) growth process and may include post-growth treatment.
Type IIa

LABORATORY GROWN DIAMOND REPORT
LG508124180
Report verification at igi.org

PROPORTIONS



CLARITY CHARACTERISTICS



KEY TO SYMBOLS

Red symbols indicate internal characteristics.
Green symbols indicate external characteristics.

**LABORATORY GROWN
DIAMOND REPORT**

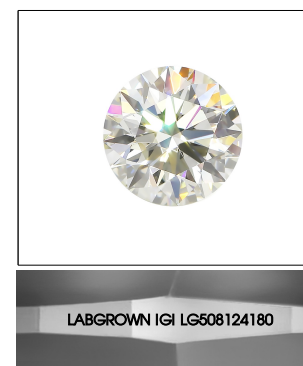
GRADING SCALES

CLARITY

IF	VVS ¹⁻²	VS ¹⁻²	SI ¹⁻²	I ¹⁻³
Internally Flawless	Very Very Slightly Included	Very Slightly Included	Slightly Included	Included

COLOR

D	E	F	G	H	I	J	Faint	Very Light	Light

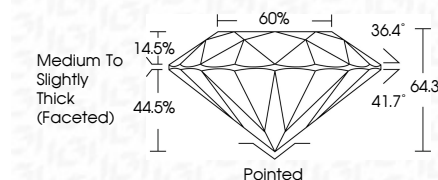


LASERSCRIBE™

Sample Image Used

LABORATORY GROWN DIAMOND REPORT

December 23, 2021	
IGI Report Number	LG508124180
Description	LABORATORY GROWN DIAMOND
Shape and Cutting Style	ROUND BRILLIANT
Measurements	8.99 - 9.05 X 5.81 MM
GRADING RESULTS	
Carat Weight	3.00 CARATS
Color Grade	J
Clarity Grade	VS 1
Cut Grade	VERY GOOD



ADDITIONAL GRADING INFORMATION

Polish	EXCELLENT
Symmetry	EXCELLENT
Fluorescence	NONE
Inscription(s)	LABGROWN IGI LG508124180

Comments:
This Laboratory Grown Diamond was created by Chemical Vapor Deposition (CVD) growth process and may include post-growth treatment.
Type IIa



IGI

December 23, 2021	
IGI Report No. LG508124180	
ROUND BRILLIANT	
8.99 - 9.05 X 5.81 MM	
3.00 CARATS	J
Color Grade	VS 1
Clarity Grade	VERY GOOD
Cut Grade	64.3%
Depth	60%
Table	Medium to Slightly Thick (Faceted)
Grade	Pointed
Polish	EXCELLENT
Symmetry	EXCELLENT
Fluorescence	NONE
Inscription(s)	LABGROWN IGI LG508124180
Comments:	This Laboratory Grown Diamond was created by Chemical Vapor Deposition (CVD) growth process and may include post-growth treatment. Type IIa

