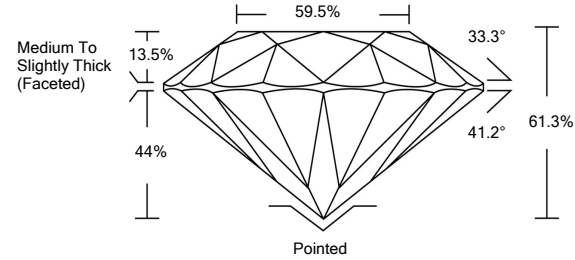




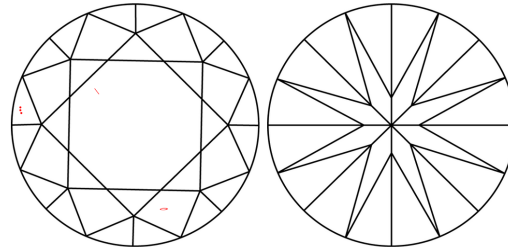
LG508129781

LABORATORY GROWN DIAMOND REPORT

PROPORTIONS



CLARITY CHARACTERISTICS



KEY TO SYMBOLS

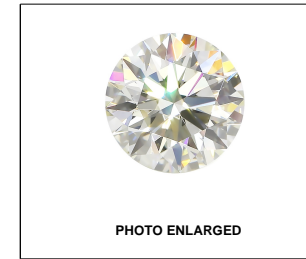
Red symbols indicate internal characteristics. Green symbols indicate external characteristics.

GRADING SCALES

Table with 5 columns: CL, NC, FT, VLT, LT and 2 rows: COLOR GRADING SCALE, CLARITY (10x) GRADING SCALE.

The laboratory grown diamond described in this Report (Report) has been graded, tested, analyzed, examined and/or inscribed by International Gemological Institute (IGI). A laboratory grown diamond is one that has essentially the same chemical, physical and optical properties as a mined diamond...

© INTERNATIONAL GEMOLOGICAL INSTITUTE, INC.



LABGROWN IGI LG508129781

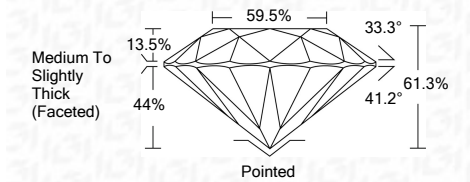
LASERSCRIBE<sup>SM</sup>



December 25, 2021
IGI Report Number LG508129781
Description LABORATORY GROWN DIAMOND

Shape and Cutting Style ROUND BRILLIANT
Measurements 7.59 - 7.64 X 4.66 MM

GRADING RESULTS
Carat Weight 1.67 CARAT
Color Grade D
Clarity Grade VS 1
Cut Grade IDEAL



ADDITIONAL GRADING INFORMATION
Polish EXCELLENT
Symmetry EXCELLENT
Fluorescence NONE
Inscription(s) LABGROWN IGI LG508129781

Comments: As Grown - No indication of post-growth treatment. This Laboratory Grown Diamond was created by High Pressure High Temperature (HPHT) growth process. Type II



Summary table of report details: IGI Report No. LG508129781, ROUND BRILLIANT, 7.59 - 7.64 X 4.66 MM, 1.67 CARAT, D, VS 1, IDEAL, 61.3%, 59.5%, Medium To Slightly Thick (Faceted), EXCELLENT, EXCELLENT, NONE, LABGROWN IGI LG508129781.

Comments: As Grown - No indication of post-growth treatment. This Laboratory Grown Diamond was created by High Pressure High Temperature (HPHT) growth process. Type II

