



**ELECTRONIC COPY**

# LABORATORY GROWN DIAMOND REPORT

# LABORATORY GROWN DIAMOND REPORT

# LG508155745

## PROPORTIONS

Diagram illustrating the proportions of a diamond-shaped gemstone (likely a pear or heart shape) with the following measurements:

- Width: 60%
- Table (Top Flat): 14.5%
- Depth: 43%
- Height: 62.5%

The diagram also indicates the stone is "Pointed" at the bottom.

## GRADING SCALES

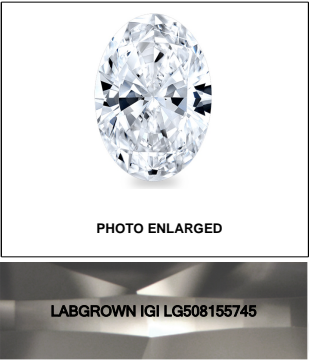
COLOR GRADING SCALE	CL	NC	FT	VLT	LT	
	COLORLESS D-F	NEAR COLORLESS G-J	FAINT K-M	VERY LIGHT N-R	LIGHT S-Z	
CLARITY (10x) GRADING SCALE	FL	IF	VVS	VS	SI	I
	FLAWLESS INTERNALLY FLAWLESS	VERY VERY SLIGHTLY INCLUDED	VERY SLIGHTLY INCLUDED	SLIGHTLY INCLUDED	INCLUDED	

The laboratory grown diamond described in this Report ("Report") has been graded, tested, analyzed, examined and/or inscribed by International Gemological Institute ("IGI") in its laboratory. IGI's analysis was conducted using scientific, physical and optical properties as mined diamonds, with the exception of being grown in a laboratory (a manufactured product). IGI's diamond and utilizes those techniques and equipment currently available to IGI, including, without limitation, 10X magnification, corrected optical microscopy, ultraviolet fluorescence, infrared spectroscopy, Raman spectroscopy, measuring device, Diamond Sure™, Diamond View™, Spectrophotometer and such other instruments and/or processes as deemed appropriate by IGI. This Report includes advanced security features. A duly accredited gemologist or jeweler can advise you with regard to the importance of and interrelationship between cut, color, clarity and carat weight.

**THIS REPORT IS NEITHER A GUARANTEE, VALUATION, NOR APPRAISAL OF THE GEMSTONE DESCRIBED HEREIN. PLEASE REVIEW THE LIMITATIONS AND RESTRICTIONS SET FORTH ONLINE FOR THIS REPORT. PLEASE SEE THE REVERSE SIDE OF THIS REPORT FOR THE FULL DISCLOSURE OF THE LIMITATIONS AND DISCLAIMERS. PLEASE GO TO [WWW.IGI.ORG](http://WWW.IGI.ORG) OR CALL 1-888-BUY-IGI.**

© INTERNATIONAL GEMOLOGICAL INSTITUTE, INC.

Red symbols indicate internal characteristics.  
Green symbols indicate external characteristics.

**LASERSCRIBE<sup>SM</sup>**

© IGI 2020, International Gemological Institute

FD - 10 20

**www.igi.org**

Diagram illustrating the proportions of a diamond shape:

- Width: 60%
- Height: 62.5%
- Left side top: 14.5%
- Left side bottom: 43%
- Bottom point: 3%

### ADDITIONAL GRADING INFORMATION

Polish	EXCELLENT
Symmetry	EXCELLENT
Fluorescence	NONE
Inscription(s)	LABGROWN IGI LG508155745

Comments: As Grown - No indication of post-growth treatment.  
This Laboratory Grown Diamond was created by High Pressure High Temperature (HPHT) growth process.  
Type II



January 7, 2022	IGI Report No. LG508155745	
OVERALL	10.04 X 7.14 X 4.46 MM	2.05 CARATS
BRILLIANT	Carat Weight	D
	Color Grade	VVS 2
	Clarity Grade	62.5%
	Depth	80%
	Table	Slightly Thick To Thick (Faceted)
	Girdle	
	Culet	Pointed
	Polish	EXCELLENT
	Symmetry	EXCELLENT
	Fluorescence	NONE
	Inscriptions(s)	LARGEDOWN IGI LG508155745
	Comments:	As Grown - No indication of post-growth treatment. This Laboratory Grown Diamond was created by high pressure high temperature (HPHT) using a chemical vapor deposition (CVD) process. Type II

**As Grown - No indication of post-growth treatment.**  
This Laboratory Grown Diamond was created by High Pressure High Temperature (HPHT) growth process.