



ELECTRONIC COPY

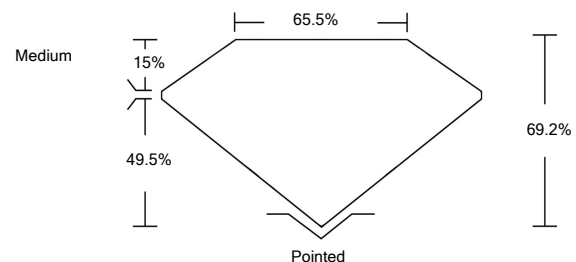
LABORATORY GROWN DIAMOND REPORT

January 10, 2022	
IGI Report Number	LG510101371
Description	LABORATORY GROWN DIAMOND
Shape and Cutting Style	CUT CORNERED RECTANGULAR MODIFIED BRILLIANT
Measurements	6.90 X 5.00 X 3.46 MM
GRADING RESULTS	
Carat Weight	1.08 CARAT
Color Grade	D
Clarity Grade	VVS 2
ADDITIONAL GRADING INFORMATION	
Polish	EXCELLENT
Symmetry	VERY GOOD
Fluorescence	NONE
Inscription(s)	LABGROWN IGI LG510101371

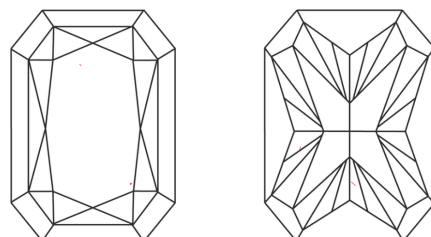
Comments: As Grown - No indication of post-growth treatment.
This Laboratory Grown Diamond was created by High Pressure High Temperature (HPHT) growth process. Type II

LG510101371

PROPORTIONS



CLARITY CHARACTERISTICS

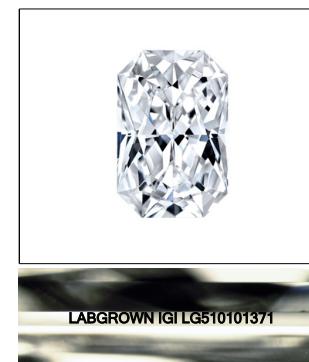


KEY TO SYMBOLS

Red symbols indicate internal characteristics.
Green symbols indicate external characteristics.

GRADING SCALES

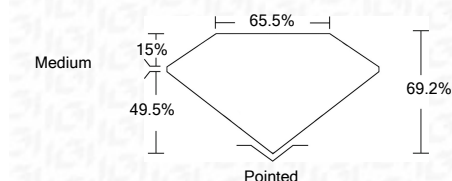
COLOR GRADING SCALE	CL	NC	FT	VL	LT	
	COLORLESS D-F	NEAR COLORLESS G-J	FAINT K-M	VERY LIGHT N-R	LIGHT S-Z	
CLARITY (10x) GRADING SCALE	FL	IF	VVS	VS	SI	I
	FLAWLESS INTERNALLY FLAWLESS	VERY VERY SLIGHTLY INCLUDED	VERY SLIGHTLY INCLUDED	SLIGHTLY INCLUDED	INCLUDED	



LASERSCRIBESM

Sample Images Used

January 10, 2022	
IGI Report Number	LG510101371
Description	LABORATORY GROWN DIAMOND
Shape and Cutting Style	CUT CORNERED RECTANGULAR MODIFIED BRILLIANT
Measurements	6.90 X 5.00 X 3.46 MM
GRADING RESULTS	
Carat Weight	1.08 CARAT
Color Grade	D
Clarity Grade	VVS 2



ADDITIONAL GRADING INFORMATION	
Polish	EXCELLENT
Symmetry	VERY GOOD
Fluorescence	NONE
Inscription(s)	LABGROWN IGI LG510101371

Comments: As Grown - No indication of post-growth treatment.
This Laboratory Grown Diamond was created by High Pressure High Temperature (HPHT) growth process. Type II



IGI

January 10, 2022	
IGI Report No. LG510101371	
CUT CORNERED RECT. MODIFIED BRILLIANT	
6.90 X 5.00 X 3.46 MM	
Carat Weight	1.08 CARAT
Color Grade	D
Clarity Grade	VVS 2
Depth	69.2%
Table	65.5%
Girdle	Medium
Culet	Pointed
Polish	EXCELLENT
Symmetry	VERY GOOD
Fluorescence	NONE
Inscription(s)	LABGROWN IGI LG510101371
Comments:	As Grown - No indication of post-growth treatment. This Laboratory Grown Diamond was created by High Pressure High Temperature (HPHT) growth process. Type II

