



ELECTRONIC COPY

LABORATORY GROWN DIAMOND REPORT

January 20, 2022	
IGI Report Number	LG510101901
Description	LABORATORY GROWN DIAMOND
Shape and Cutting Style	OVAL BRILLIANT
Measurements	8.28 X 5.99 X 3.71 MM
GRADING RESULTS	
Carat Weight	1.16 CARAT
Color Grade	D
Clarity Grade	VS 1
ADDITIONAL GRADING INFORMATION	
Polish	EXCELLENT
Symmetry	EXCELLENT
Fluorescence	NONE
Inscription(s)	LABGROWN IGI LG510101901

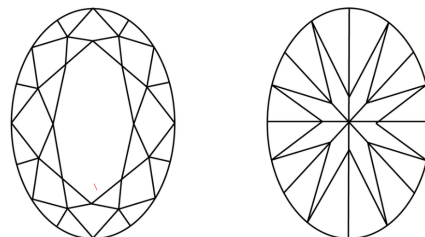
Comments: As Grown - No indication of post-growth treatment.

This Laboratory Grown Diamond was created by High Pressure High Temperature (HPHT) growth process.
Type II

Diagram illustrating the proportions of a diamond-shaped gemstone, labeled LG510101901. The proportions are defined by the following measurements:

- Top Width:** 60%
- Left Side Length:** 45%
- Right Side Length:** 61.9%
- Top Facet Length:** 13%
- Bottom Shape:** Pointed
- Overall Description:** Medium To Slightly Thick (Faceted)

CLARITY CHARACTERISTICS

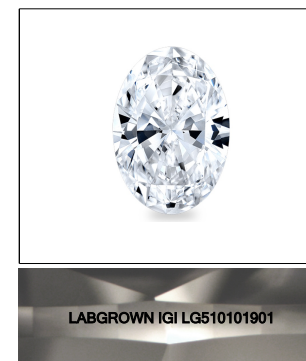


KEY TO SYMBOLS

Red symbols indicate internal characteristics.
Green symbols indicate external characteristics.

GRADING SCALES

COLOR GRADING SCALE	CL		NC		FT		VLT		LT	
	COLORLESS D-F		NEAR COLORLESS G-J		FAINT K-M		VERY LIGHT N-R		LIGHT S-Z	
CLARITY (10x) GRADING SCALE	FL	IF	VVS		VS		SI		I	
	FLAWLESS INTERNALLY FLAWLESS		VERY VERY SLIGHTLY INCLUDED		VERY SLIGHTLY INCLUDED		SLIGHTLY INCLUDED		INCLUDED	

LASERSCRIBESM

Sample Image Used

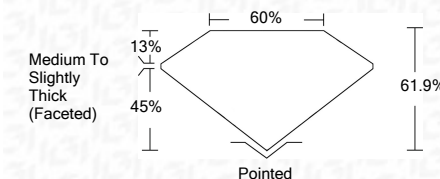


© IGI 2020, International Gemological Institute

FD - 10 20

LABORATORY GROWN DIAMOND REPORT

January 20, 2022	
IGI Report Number	LG510101901
Description	LABORATORY GROWN DIAMOND
Shape and Cutting Style	OVAL BRILLIANT
Measurements	8.28 X 5.99 X 3.71 MM
GRADING RESULTS	
Carat Weight	1.16 CARAT
Color Grade	D
Clarity Grade	VS 1



ADDITIONAL GRADING INFORMATION

Polish	EXCELLENT
Symmetry	EXCELLENT
Fluorescence	NONE
Inscription(s)	LABGROWN IGI LG510101901

Comments: As Grown - No indication of post-growth treatment.
This Laboratory Grown Diamond was created by High Pressure High Temperature (HPHT) growth process.
Type II



Date	January 20, 2022
Report No.	LGS1019801
Name	RIVA BRILLIANT
Weight	287 X 5.68 X 3.71 MM
Color Grade	D
Clarity Grade	VVS 1
Cut	EXCELLENT
Symmetry	EXCELLENT
Fluorescence	NONE
Inscriptions(s)	LARGROWN IGI LGS1019801
Comments:	As Grown - No Indication of post-growth treatment. This Laboratory Crown Diamond was created by High Pressure High Temperature (HPHT) growth process.

As Grown - No indication of post-growth treatment.
This Laboratory Grown Diamond was created by High Pressure High Temperature (HPHT) growth process.