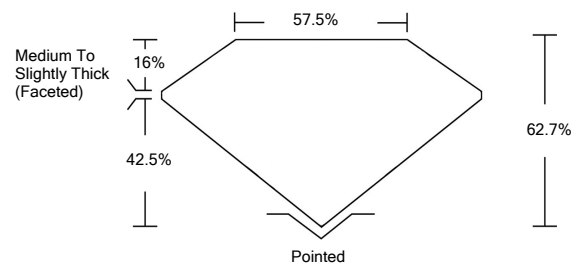




LG510174174

LABORATORY GROWN DIAMOND REPORT

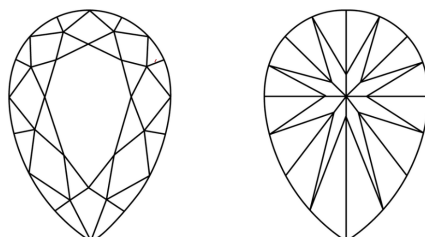
PROPORTIONS



GRADING SCALES

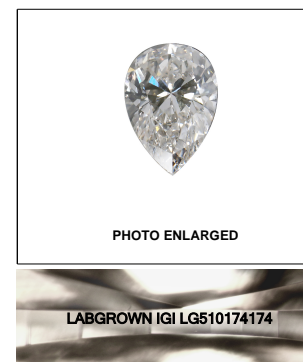
COLOR GRADING SCALE	CL	NC	FT	VL	LT	
	COLORLESS D-F	NEAR COLORLESS G-J	FAINT K-M	VERY LIGHT N-R	LIGHT S-Z	
CLARITY (10x) GRADING SCALE	FL	IF	VVS	VS	SI	I
	FLAWLESS INTERNALLY FLAWLESS	VERY VERY SLIGHTLY INCLUDED	VERY SLIGHTLY INCLUDED	SLIGHTLY INCLUDED	INCLUDED	INCLUDED

CLARITY CHARACTERISTICS



KEY TO SYMBOLS

Red symbols indicate internal characteristics.
Green symbols indicate external characteristics.



LASERSCRIBESM

January 10, 2022

IGI Report Number

LG510174174

Description

**LABORATORY GROWN
DIAMOND**

Shape and Cutting Style

PEAR BRILLIANT

Measurements

8.89 X 5.71 X 3.58 MM

GRADING RESULTS

Carat Weight

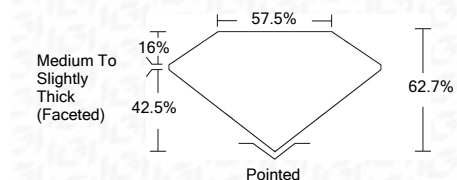
1.09 CARAT

Color Grade

I

Clarity Grade

VVS 2



ADDITIONAL GRADING INFORMATION

Polish

EXCELLENT

Symmetry

VERY GOOD

Fluorescence

NONE

Inscription(s)

LABGROWN IGI LG510174174

Comments: This Laboratory Grown Diamond was created by Chemical Vapor Deposition (CVD) growth process and may include post-growth treatment.
Type IIa

January 10, 2022

IGI Report Number

LG510174174

Description

**LABORATORY GROWN
DIAMOND**

Shape and Cutting Style

PEAR BRILLIANT

Measurements

8.89 X 5.71 X 3.58 MM

GRADING RESULTS

Carat Weight

1.09 CARAT

Color Grade

I

Clarity Grade

VVS 2

ADDITIONAL GRADING INFORMATION

Polish

EXCELLENT

Symmetry

VERY GOOD

Fluorescence

NONE

Inscription(s)

LABGROWN IGI LG510174174

Comments: This Laboratory Grown Diamond was created by Chemical Vapor Deposition (CVD) growth process and may include post-growth treatment.
Type IIa



IGI

January 10, 2022	IGI Report No. LG510174174	1.09 CARAT	I
PEAR BRILLIANT	8.89 X 5.71 X 3.58 MM	VVS 2	62.7%
Carat Weight	Color Grade	Depth	Table
1.09 CARAT	I	62.7%	57.5%
	Clarity Grade	Girdle	Medium To Slightly Thick (Faceted)
	VVS 2	Pointed	
	EXCELLENT	Polish	EXCELLENT
	VERY GOOD	Symmetry	VERY GOOD
	NONE	Fluorescence	NONE
	LABGROWN IGI LG510174174	Inscription(s)	LABGROWN IGI LG510174174
		Comments:	This Laboratory Grown Diamond was created by Chemical Vapor Deposition (CVD) growth process and may include post-growth treatment. Type IIa