

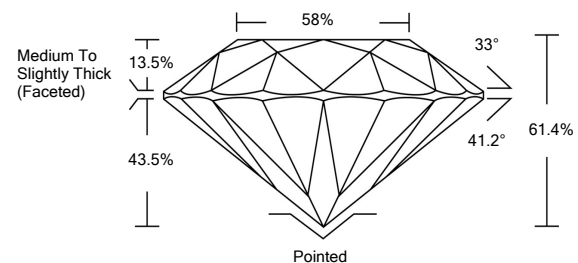


**ELECTRONIC COPY**

**LABORATORY GROWN DIAMOND REPORT**

LG510184237

**PROPORTIONS**



**GRADING SCALES**

|                             |                              |                             |                        |                   |           |   |
|-----------------------------|------------------------------|-----------------------------|------------------------|-------------------|-----------|---|
| COLOR GRADING SCALE         | CL                           | NC                          | FT                     | VL                | LT        |   |
|                             | COLORLESS D-F                | NEAR COLORLESS G-J          | FAINT K-M              | VERY LIGHT N-R    | LIGHT S-Z |   |
| CLARITY (10x) GRADING SCALE | FL                           | IF                          | VVS                    | VS                | SI        | I |
|                             | FLAWLESS INTERNALLY FLAWLESS | VERY VERY SLIGHTLY INCLUDED | VERY SLIGHTLY INCLUDED | SLIGHTLY INCLUDED | INCLUDED  |   |

January 12, 2022

IGI Report Number

**LG510184237**

Description

**LABORATORY GROWN DIAMOND**

Shape and Cutting Style

**ROUND BRILLIANT**

Measurements

**6.74 - 6.80 X 4.15 MM**

**GRADING RESULTS**

Carat Weight

**1.18 CARAT**

Color Grade

**G**

Clarity Grade

**VS 1**

Cut Grade

**IDEAL**

January 12, 2022

IGI Report Number

**LG510184237**

Description

**LABORATORY GROWN DIAMOND**

Shape and Cutting Style

**ROUND BRILLIANT**

Measurements

**6.74 - 6.80 X 4.15 MM**

**GRADING RESULTS**

Carat Weight

**1.18 CARAT**

Color Grade

**G**

Clarity Grade

**VS 1**

Cut Grade

**IDEAL**

**ADDITIONAL GRADING INFORMATION**

Polish

**EXCELLENT**

Symmetry

**EXCELLENT**

Fluorescence

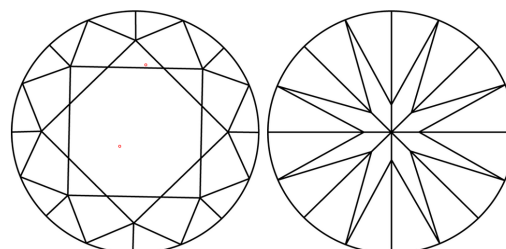
**NONE**

Inscription(s)

**LABGROWN IGI LG510184237**

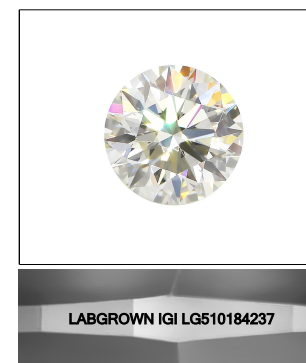
Comments: This Laboratory Grown Diamond was created by Chemical Vapor Deposition (CVD) growth process and may include post-growth treatment.  
Type IIa

**CLARITY CHARACTERISTICS**



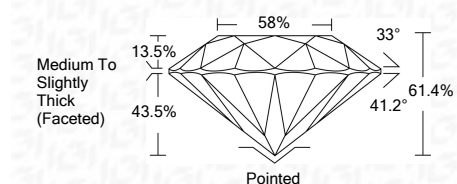
**KEY TO SYMBOLS**

Red symbols indicate internal characteristics.  
Green symbols indicate external characteristics.



**LASERSCRIBE<sup>SM</sup>**

Sample Image Used



**ADDITIONAL GRADING INFORMATION**

Polish

**EXCELLENT**

Symmetry

**EXCELLENT**

Fluorescence

**NONE**

Inscription(s)

**LABGROWN IGI LG510184237**

Comments: This Laboratory Grown Diamond was created by Chemical Vapor Deposition (CVD) growth process and may include post-growth treatment.  
Type IIa



**IGI**

|                            |            |   |      |       |       |     |                                    |         |           |           |      |                          |
|----------------------------|------------|---|------|-------|-------|-----|------------------------------------|---------|-----------|-----------|------|--------------------------|
| IGI Report No. LG510184237 | 1.18 CARAT | G | VS 1 | IDEAL | 61.4% | 58% | Medium To Slightly Thick (Faceted) | Pointed | EXCELLENT | EXCELLENT | NONE | LABGROWN IGI LG510184237 |
| ROUND BRILLIANT            |            |   |      |       |       |     |                                    |         |           |           |      |                          |
| 6.74 - 6.80 X 4.15 MM      |            |   |      |       |       |     |                                    |         |           |           |      |                          |
| Carat Weight               |            |   |      |       |       |     |                                    |         |           |           |      |                          |
| Color Grade                |            |   |      |       |       |     |                                    |         |           |           |      |                          |
| Clarity Grade              |            |   |      |       |       |     |                                    |         |           |           |      |                          |
| Cut Grade                  |            |   |      |       |       |     |                                    |         |           |           |      |                          |
| Depth                      |            |   |      |       |       |     |                                    |         |           |           |      |                          |
| Table                      |            |   |      |       |       |     |                                    |         |           |           |      |                          |
| Girdle                     |            |   |      |       |       |     |                                    |         |           |           |      |                          |
| Culet                      |            |   |      |       |       |     |                                    |         |           |           |      |                          |
| Polish                     |            |   |      |       |       |     |                                    |         |           |           |      |                          |
| Symmetry                   |            |   |      |       |       |     |                                    |         |           |           |      |                          |
| Fluorescence               |            |   |      |       |       |     |                                    |         |           |           |      |                          |
| Inscription(s)             |            |   |      |       |       |     |                                    |         |           |           |      |                          |

Comments: This Laboratory Grown Diamond was created by Chemical Vapor Deposition (CVD) growth process and may include post-growth treatment.  
Type IIa