



**ELECTRONIC COPY**

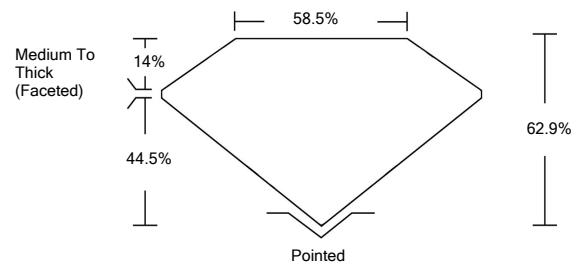
**LABORATORY GROWN DIAMOND REPORT**

January 20, 2022	
IGI Report Number	<b>LG510187057</b>
Description	<b>LABORATORY GROWN DIAMOND</b>
Shape and Cutting Style	<b>OVAL BRILLIANT</b>
Measurements	<b>9.87 X 7.07 X 4.45 MM</b>
<b>GRADING RESULTS</b>	
Carat Weight	<b>2.00 CARATS</b>
Color Grade	<b>D</b>
Clarity Grade	<b>VS 2</b>
<b>ADDITIONAL GRADING INFORMATION</b>	
Polish	<b>EXCELLENT</b>
Symmetry	<b>EXCELLENT</b>
Fluorescence	<b>NONE</b>
Inscription(s)	<b>LABGROWN IGI LG510187057</b>

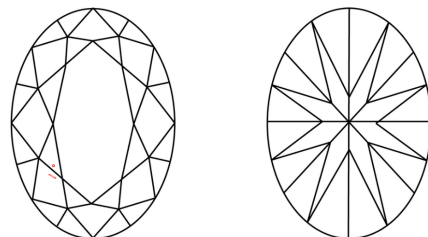
Comments: As Grown - No indication of post-growth treatment.  
This Laboratory Grown Diamond was created by High Pressure High Temperature (HPHT) growth process. Type II

LG510187057

**PROPORTIONS**



**CLARITY CHARACTERISTICS**

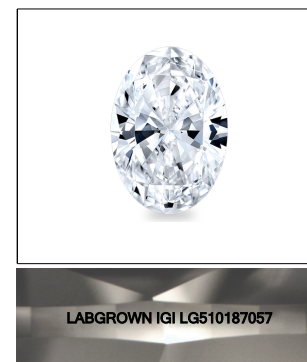


**KEY TO SYMBOLS**

Red symbols indicate internal characteristics.  
Green symbols indicate external characteristics.

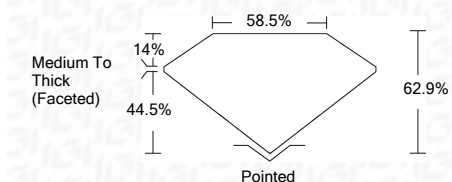
**GRADING SCALES**

COLOR GRADING SCALE	CL	NC	FT	VLT	LT	
	COLORLESS D-F	NEAR COLORLESS G-J	FAINT K-M	VERY LIGHT N-R	LIGHT S-Z	
CLARITY (10x) GRADING SCALE	FL	IF	VVS	VS	SI	I
	FLAWLESS INTERNALLY FLAWLESS	VERY VERY SLIGHTLY INCLUDED	VERY SLIGHTLY INCLUDED	SLIGHTLY INCLUDED	INCLUDED	



**LASERSCRIBE<sup>SM</sup>**  
Sample Images Used

January 20, 2022	
IGI Report Number	<b>LG510187057</b>
Description	<b>LABORATORY GROWN DIAMOND</b>
Shape and Cutting Style	<b>OVAL BRILLIANT</b>
Measurements	<b>9.87 X 7.07 X 4.45 MM</b>
<b>GRADING RESULTS</b>	
Carat Weight	<b>2.00 CARATS</b>
Color Grade	<b>D</b>
Clarity Grade	<b>VS 2</b>



<b>ADDITIONAL GRADING INFORMATION</b>	
Polish	<b>EXCELLENT</b>
Symmetry	<b>EXCELLENT</b>
Fluorescence	<b>NONE</b>
Inscription(s)	<b>LABGROWN IGI LG510187057</b>

Comments: As Grown - No indication of post-growth treatment.  
This Laboratory Grown Diamond was created by High Pressure High Temperature (HPHT) growth process. Type II



January 20, 2022	IGI Report No. LG510187057
IGI Report No. LG510187057	<b>OVAL BRILLIANT</b>
IGI Report No. LG510187057	<b>9.87 X 7.07 X 4.45 MM</b>
IGI Report No. LG510187057	<b>2.00 CARATS</b>
IGI Report No. LG510187057	<b>D</b>
IGI Report No. LG510187057	<b>VS 2</b>
IGI Report No. LG510187057	<b>62.9%</b>
IGI Report No. LG510187057	<b>58.5%</b>
IGI Report No. LG510187057	<b>Medium To Thick (Faceted)</b>
IGI Report No. LG510187057	<b>Pointed</b>
IGI Report No. LG510187057	<b>EXCELLENT</b>
IGI Report No. LG510187057	<b>EXCELLENT</b>
IGI Report No. LG510187057	<b>NONE</b>
IGI Report No. LG510187057	<b>LABGROWN IGI LG510187057</b>
IGI Report No. LG510187057	<b>Comments:</b>
IGI Report No. LG510187057	<b>As Grown - No indication of post-growth treatment. This Laboratory Grown Diamond was created by High Pressure High Temperature (HPHT) growth process. Type II</b>