



**ELECTRONIC COPY**

LG510189041

**LABORATORY GROWN DIAMOND REPORT**

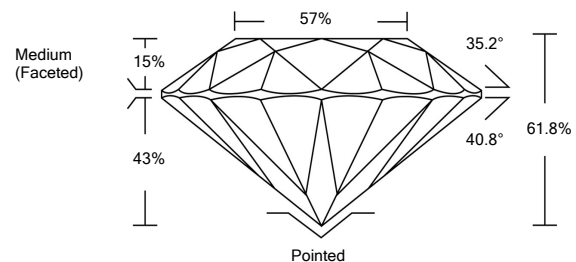
**GRADING SCALES**

COLOR GRADING SCALE	CL COLORLESS D-F	NC NEAR COLORLESS G-J	FT FAINT K-M	VLT VERY LIGHT N-R	LT LIGHT S-Z	
CLARITY (10x) GRADING SCALE	FL FLAWLESS INTERNALLY FLAWLESS	IF INTERNAL FLAWLESS	VVS VERY VERY SLIGHTLY INCLUDED	VS VERY SLIGHTLY INCLUDED	SI SLIGHTLY INCLUDED	I INCLUDED

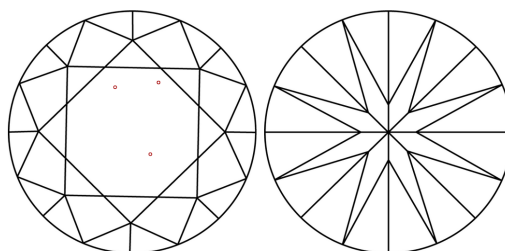
The laboratory grown diamond described in this Report (Report) has been graded, tested, analyzed, examined and/or inscribed by International Gemological Institute (IGI). A laboratory grown diamond is one that has essentially the same chemical, physical and optical properties as a mined diamond, with the exception of being grown by man (a manufactured product). IGI employs and utilizes those techniques and equipment currently available to IGI, including, without limitation, 10X magnification, corrected triplet loupe, binocular microscope, master color comparison stones, non-contact-optical measuring device, Diamond Sure™, Diamond View™, Spectrophotometer and such other instruments and/or processes as deemed appropriate by IGI. This Report includes advanced security features. A duly accredited gemologist or jeweler can advise you with respect to the importance of and interrelationship between cut, color, clarity and carat weight. **THIS REPORT IS NEITHER A GUARANTEE, VALUATION, NOR APPRAISAL OF THE GEMSTONE DESCRIBED HEREIN. PLEASE REVIEW THE LIMITATIONS AND RESTRICTIONS SET FORTH ONLINE. FOR ADDITIONAL INFORMATION, IMPORTANT LIMITATIONS AND DISCLAIMERS, PLEASE GO TO WWW.IGI.ORG OR CALL 1-888-BUY-IGIS.**

© INTERNATIONAL GEMOLOGICAL INSTITUTE, INC.

**PROPORTIONS**

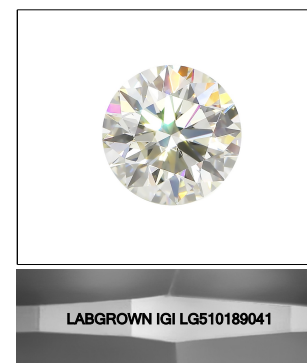


**CLARITY CHARACTERISTICS**



**KEY TO SYMBOLS**

Red symbols indicate internal characteristics.  
Green symbols indicate external characteristics.



**LASERSCRIBE<sup>SM</sup>**  
Sample Image Used

February 6, 2022

IGI Report Number **LG510189041**

Description **LABORATORY GROWN  
DIAMOND**

Shape and Cutting Style **ROUND BRILLIANT**

Measurements **8.58 - 8.61 X 5.31 MM**

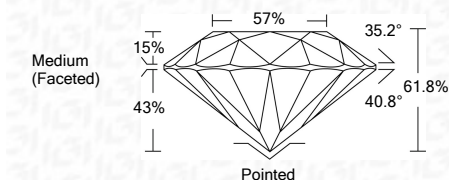
**GRADING RESULTS**

Carat Weight **2.41 CARATS**

Color Grade **G**

Clarity Grade **VS 1**

Cut Grade **IDEAL**



**ADDITIONAL GRADING INFORMATION**

Polish **EXCELLENT**

Symmetry **EXCELLENT**

Fluorescence **NONE**

Inscription(s) **LABGROWN IGI LG510189041**

Comments: As Grown - No indication of post-growth treatment  
This Laboratory Grown Diamond was created by Chemical Vapor Deposition (CVD) process.

February 6, 2022

IGI Report Number **LG510189041**

Description **LABORATORY GROWN  
DIAMOND**

Shape and Cutting Style **ROUND BRILLIANT**

Measurements **8.58 - 8.61 X 5.31 MM**

**GRADING RESULTS**

Carat Weight **2.41 CARATS**

Color Grade **G**

Clarity Grade **VS 1**

Cut Grade **IDEAL**

**ADDITIONAL GRADING INFORMATION**

Polish **EXCELLENT**

Symmetry **EXCELLENT**

Fluorescence **NONE**

Inscription(s) **LABGROWN IGI LG510189041**

Comments: As Grown - No indication of post-growth treatment  
This Laboratory Grown Diamond was created by Chemical Vapor Deposition (CVD) process.

February 6, 2022	IGI Report No. LG510189041	2.41 CARATS	G	Pointed	EXCELLENT	EXCELLENT	NONE	LABGROWN IGI LG510189041	As Grown - No indication of post-growth treatment This Laboratory Grown Diamond was created by Chemical Vapor Deposition (CVD) process.
ROUND BRILLIANT	8.58 - 8.61 X 5.31 MM	VS 1	IDEAL	61.8%	57%	Medium (Faceted)	Polish	EXCELLENT	
Carat Weight	Color Grade	Clarity Grade	Cut Grade	Depth	Table	Girdle	Polish	EXCELLENT	
							Symmetry	EXCELLENT	
							Fluorescence	NONE	
							Inscription(s)	LABGROWN IGI LG510189041	



**IGI**

