



**LABORATORY GROWN DIAMOND REPORT**

January 8, 2022  
 IGI Report Number **LG510191710**  
 Description **LABORATORY GROWN  
DIAMOND**  
 Shape and Cutting Style **MARQUISE BRILLIANT**  
 Measurements **13.73 X 6.96 X 4.49 MM**

**GRADING RESULTS**

Carat Weight **2.51 CARATS**  
 Color Grade **E**  
 Clarity Grade **VS 1**

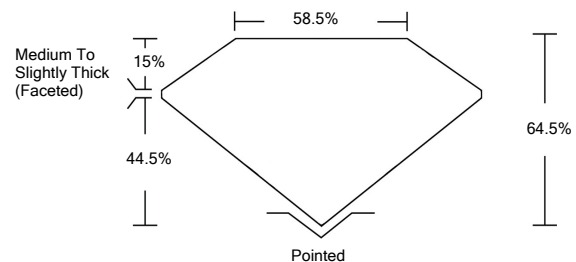
**ADDITIONAL GRADING INFORMATION**

Polish **EXCELLENT**  
 Symmetry **EXCELLENT**  
 Fluorescence **NONE**  
 Inscription(s) **LABGROWN IGI LG510191710**

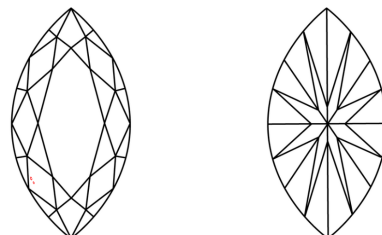
Comments: As Grown - No indication of post-growth treatment.  
 This Laboratory Grown Diamond was created by High Pressure High Temperature (HPHT) growth process. Type II

LG510191710

**PROPORTIONS**



**CLARITY CHARACTERISTICS**

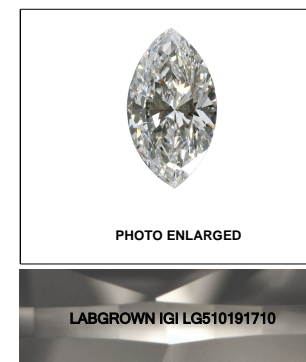


**KEY TO SYMBOLS**

Red symbols indicate internal characteristics.  
 Green symbols indicate external characteristics.

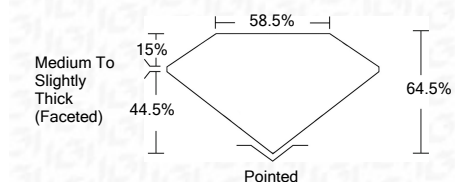
**GRADING SCALES**

COLOR GRADING SCALE	CL	NC	FT	VL	LT	
	COLORLESS D-F	NEAR COLORLESS G-J	FAINT K-M	VERY LIGHT N-R	LIGHT S-Z	
CLARITY (10x) GRADING SCALE	FL	IF	VVS	VS	SI	I
	FLAWLESS INTERNALLY FLAWLESS	VERY VERY SLIGHTLY INCLUDED	VERY SLIGHTLY INCLUDED	SLIGHTLY INCLUDED	INCLUDED	



**LASERSCRIBE<sup>SM</sup>**

January 8, 2022  
 IGI Report Number **LG510191710**  
 Description **LABORATORY GROWN  
DIAMOND**  
 Shape and Cutting Style **MARQUISE BRILLIANT**  
 Measurements **13.73 X 6.96 X 4.49 MM**  
**GRADING RESULTS**  
 Carat Weight **2.51 CARATS**  
 Color Grade **E**  
 Clarity Grade **VS 1**



**ADDITIONAL GRADING INFORMATION**

Polish **EXCELLENT**  
 Symmetry **EXCELLENT**  
 Fluorescence **NONE**  
 Inscription(s) **LABGROWN IGI LG510191710**

Comments: As Grown - No indication of post-growth treatment.  
 This Laboratory Grown Diamond was created by High Pressure High Temperature (HPHT) growth process. Type II



**IGI**

January 8, 2022  
 IGI Report No. **LG510191710**  
**MARQUISE BRILLIANT**  
 13.73 X 6.96 X 4.49 MM  
 Carat Weight **2.51 CARATS**  
 Color Grade **E**  
 Clarity Grade **VS 1**  
 Depth **64.5%**  
 Table **58.5%**  
 Girdle **Medium To Slightly Thick (Faceted)**  
 Culet **Pointed**  
 Polish **EXCELLENT**  
 Symmetry **EXCELLENT**  
 Fluorescence **NONE**  
 Inscription(s) **LABGROWN IGI LG510191710**  
 Comments:  
 As Grown - No indication of post-growth treatment.  
 This Laboratory Grown Diamond was created by High Pressure High Temperature (HPHT) growth process. Type II