



ELECTRONIC COPY

LABORATORY GROWN DIAMOND REPORT

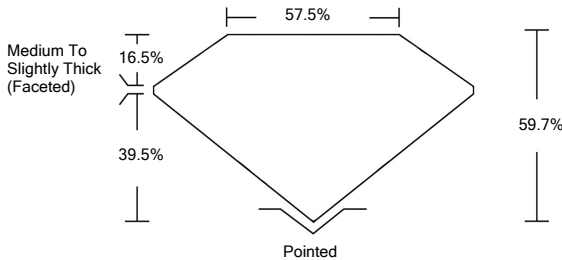
LABORATORY GROWN DIAMOND REPORT

LABORATORY GROWN DIAMOND REPORT

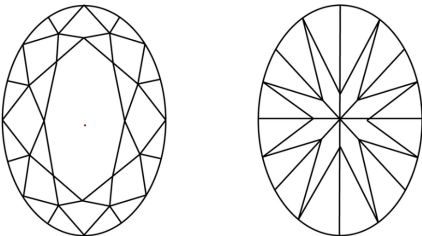
January 8, 2022	
IGI Report Number	LG510192362
Description	LABORATORY GROWN DIAMOND
Shape and Cutting Style	OVAL BRILLIANT
Measurements	10.77 X 7.13 X 4.26 MM
GRADING RESULTS	
Carat Weight	2.15 CARATS
Color Grade	G
Clarity Grade	VVS 2
ADDITIONAL GRADING INFORMATION	
Polish	EXCELLENT
Symmetry	EXCELLENT
Fluorescence	NONE
Inscription(s)	LABGROWN IGI LG510192362

Comments: This Laboratory Grown Diamond was created by Chemical Vapor Deposition (CVD) growth process and may include post-growth treatment.
Type IIa

PROPORTIONS



CLARITY CHARACTERISTICS

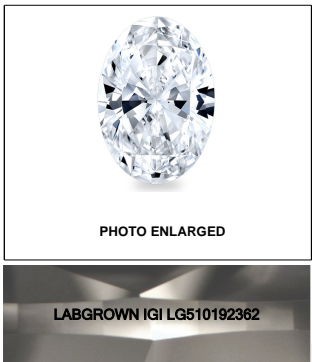
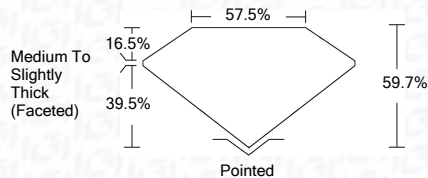
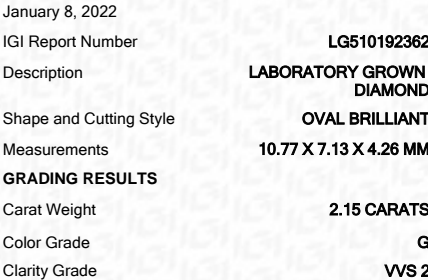


KEY TO SYMBOLS

Red symbols indicate internal characteristics.
Green symbols indicate external characteristics.

GRADING SCALES

COLOR GRADING SCALE	CL		NC		FT		VLT		LT	
	COLORLESS D-F		NEAR COLORLESS G-J		FAINT K-M		VERY LIGHT N-R		LIGHT S-Z	
CLARITY (10x) GRADING SCALE	FL IF		VVS		VS		SI		I	
	FLAWLESS INTERNALLY FLAWLESS		VERY VERY SLIGHTLY INCLUDED		VERY SLIGHTLY INCLUDED		SLIGHTLY INCLUDED		INCLUDED	

**LASERSCRIBESM**

ADDITIONAL GRADING INFORMATION

Polish	EXCELLENT
Symmetry	EXCELLENT
Fluorescence	NONE
Inscription(s)	LABGROWN IGI LG510192362

Comments: This Laboratory Grown Diamond was created by Chemical Vapor Deposition (CVD) growth process and may include post-growth treatment.
Type IIa



IGI

© IGI 2020, International Gemological Institute

FD - 10 20



www.igi.org



JGRI Report No. LGS10182382									
OVAL BRILLIANT									
Carat Weight		10.77 x 7.13 x 4.26 MM		2.15 CARATS					
Color Grade		G		VVS 2					
Clarity Grade		Depth		89.7%					
Table		Girdle		57.5%					
Culet		Polarized		(Faceted)					
Symmetry		Excellent		Polished					
Fluorescence		None		Excellent					
Inscriptions(s)		LARGROWN LG1 LGS10182382		NONE					
Comments:									
This Laboratory Grown Diamond was created by Chemical Vapor Deposition (CVD) growth process and may include post-growth treatments. Type IIa									