



**INTERNATIONAL
GEMOLOGICAL
INSTITUTE**

**ELECTRONIC COPY LABORATORY GROWN
DIAMOND REPORT**

**IGI LABORATORY GROWN
DIAMOND ID REPORT**

January 5, 2022
IGI Report Number **LG510193105**

LABORATORY GROWN DIAMOND REPORT

LG510193105

ROUND BRILLIANT
6.14 - 6.18 X 3.84 MM
Carat Weight 0.90 CARAT
Color Grade D
Clarity Grade SI 1
Cut Grade EXCELLENT
Polish EXCELLENT
Symmetry EXCELLENT
Fluorescence NONE
Inscription(s) LABGROWN IGI
LG510193105

IGI LABORATORY GROWN DIAMOND IDENTIFICATION REPORT

January 5, 2022
IGI Report Number LG510193105
Description LABORATORY GROWN DIAMOND
Shape and Cutting Style ROUND BRILLIANT
Measurements 6.14 - 6.18 X 3.84 MM

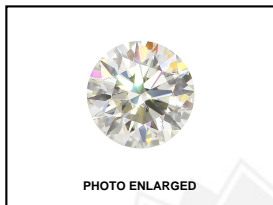


PHOTO ENLARGED

LABGROWN IGI LG510193105

Comments: As Grown - No indication of post-growth treatment.
This Laboratory Grown Diamond was created by High Pressure High Temperature (HPHT) growth process.
Type II

GRADING RESULTS

Carat Weight 0.90 CARAT
Color Grade D
Clarity Grade SI 1
Cut Grade EXCELLENT

LASERSCRIBESM



ADDITIONAL GRADING INFORMATION

Polish EXCELLENT
Symmetry EXCELLENT
Fluorescence NONE
Inscription(s) LABGROWN IGI LG510193105

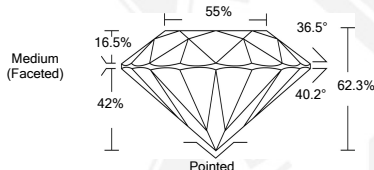
**IGI LABORATORY GROWN
DIAMOND ID REPORT**

January 5, 2022
IGI Report Number **LG510193105**

Comments: As Grown - No indication of post-growth treatment.
This Laboratory Grown Diamond was created by High Pressure High Temperature (HPHT) growth process.
Type II

ROUND BRILLIANT
6.14 - 6.18 X 3.84 MM
Carat Weight 0.90 CARAT
Color Grade D
Clarity Grade SI 1
Cut Grade EXCELLENT
Polish EXCELLENT
Symmetry EXCELLENT
Fluorescence NONE
Inscription(s) LABGROWN IGI
LG510193105

Comments: As Grown - No indication of post-growth treatment.
This Laboratory Grown Diamond was created by High Pressure High Temperature (HPHT) growth process.
Type II



THIS DOCUMENT WAS PRODUCED WITH THE FOLLOWING SECURITY MEASURES: SPECIAL DOCUMENT PAPER, INK SCREENS, WATERMARK, BACKGROUND DESIGN, HOLOGRAM AND OTHER SECURITY FEATURES NOT LISTED AND DO EXCEED DOCUMENT SECURITY INDUSTRY GUIDELINES.

For Terms & Conditions and to verify this report, please visit www.igi.org