

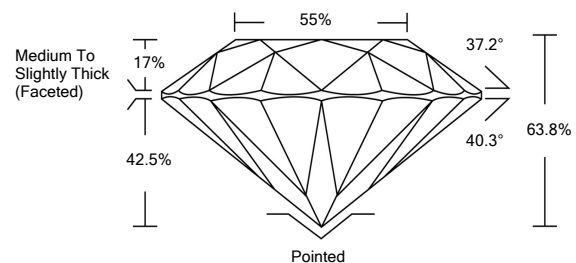


ELECTRONIC COPY

LABORATORY GROWN DIAMOND REPORT

LG512205223

PROPORTIONS



GRADING SCALES

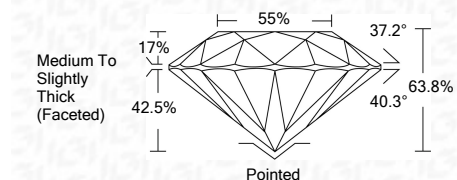
COLOR GRADING SCALE	CL	NC	FT	VLT	LT	
	COLORLESS D-F	NEAR COLORLESS G-J	FAINT K-M	VERY LIGHT N-R	LIGHT S-Z	
CLARITY (10x) GRADING SCALE	FL	IF	VVS	VS	SI	I
	FLAWLESS INTERNALLY FLAWLESS	VERY VERY SLIGHTLY INCLUDED	VERY SLIGHTLY INCLUDED	SLIGHTLY INCLUDED	INCLUDED	

February 1, 2022	
IGI Report Number	LG512205223
Description	LABORATORY GROWN DIAMOND
Shape and Cutting Style	ROUND BRILLIANT
Measurements	6.28 - 6.32 X 4.02 MM

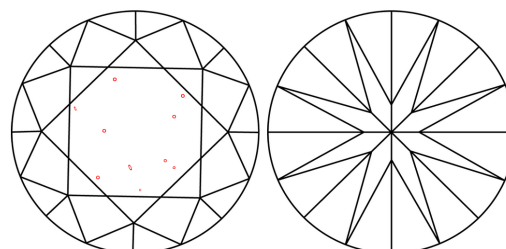
February 1, 2022	
IGI Report Number	LG512205223
Description	LABORATORY GROWN DIAMOND
Shape and Cutting Style	ROUND BRILLIANT
Measurements	6.28 - 6.32 X 4.02 MM
GRADING RESULTS	
Carat Weight	1.00 CARAT
Color Grade	E
Clarity Grade	SI 1
Cut Grade	VERY GOOD

GRADING RESULTS

Carat Weight	1.00 CARAT
Color Grade	E
Clarity Grade	SI 1
Cut Grade	VERY GOOD

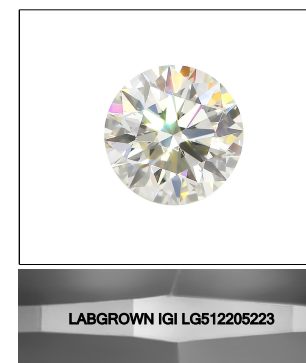


CLARITY CHARACTERISTICS



KEY TO SYMBOLS

Red symbols indicate internal characteristics.
Green symbols indicate external characteristics.



ADDITIONAL GRADING INFORMATION

Polish	EXCELLENT
Symmetry	VERY GOOD
Fluorescence	NONE
Inscription(s)	LABGROWN IGI LG512205223

ADDITIONAL GRADING INFORMATION	
Polish	EXCELLENT
Symmetry	VERY GOOD
Fluorescence	NONE
Inscription(s)	LABGROWN IGI LG512205223

Comments: This Laboratory Grown Diamond was created by Chemical Vapor Deposition (CVD) growth process and may include post-growth treatment.
Type IIa

Comments: This Laboratory Grown Diamond was created by Chemical Vapor Deposition (CVD) growth process and may include post-growth treatment.
Type IIa



IGI

February 1, 2022	
IGI Report No. LG512205223	
ROUND BRILLIANT	
6.28 - 6.32 X 4.02 MM	
Carat Weight	1.00 CARAT
Color Grade	E
Clarity Grade	SI 1
Cut Grade	VERY GOOD
Depth	63.8%
Table	55%
Girdle	Medium To Slightly Thick (Faceted)
Culet	Pointed
Polish	EXCELLENT
Symmetry	VERY GOOD
Fluorescence	NONE
Inscription(s)	LABGROWN IGI LG512205223
Comments:	This Laboratory Grown Diamond was created by Chemical Vapor Deposition (CVD) growth process and may include post-growth treatment. Type IIa