

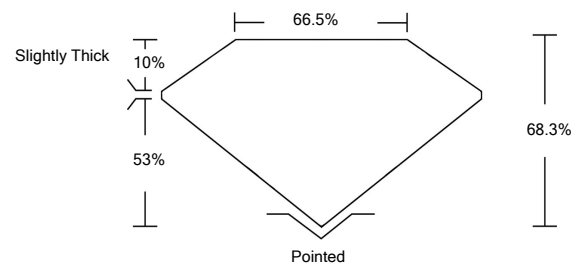


ELECTRONIC COPY

LABORATORY GROWN DIAMOND REPORT

LG512221592

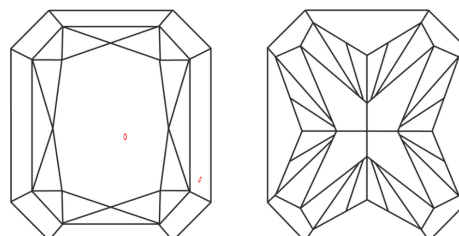
PROPORTIONS



GRADING SCALES

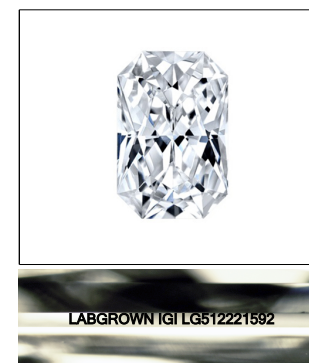
COLOR GRADING SCALE	CL	NC	FT	VL	LT	
	COLORLESS D-F	NEAR COLORLESS G-J	FAINT K-M	VERY LIGHT N-R	LIGHT S-Z	
CLARITY (10x) GRADING SCALE	FL	IF	VVS	VS	SI	I
	FLAWLESS INTERNALLY FLAWLESS	VERY VERY SLIGHTLY INCLUDED	VERY SLIGHTLY INCLUDED	SLIGHTLY INCLUDED		INCLUDED

CLARITY CHARACTERISTICS



KEY TO SYMBOLS

Red symbols indicate internal characteristics.
Green symbols indicate external characteristics.



LASERSCRIBESM
Sample Image Used

January 23, 2022

IGI Report Number

LG512221592

Description

**LABORATORY GROWN
DIAMOND**

Shape and Cutting Style

**CUT CORNERED
RECTANGULAR MODIFIED
BRILLIANT**

Measurements

7.99 X 5.87 X 4.01 MM

GRADING RESULTS

Carat Weight

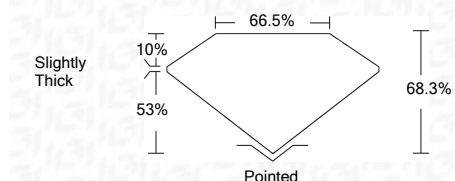
1.70 CARAT

Color Grade

G

Clarity Grade

VS 2



ADDITIONAL GRADING INFORMATION

Polish

EXCELLENT

Symmetry

EXCELLENT

Fluorescence

NONE

Inscription(s)

LABGROWN IGI LG512221592

Comments: This Laboratory Grown Diamond was created by Chemical Vapor Deposition (CVD) growth process and may include post-growth treatment.
Type IIa

January 23, 2022

IGI Report Number

LG512221592

Description

**LABORATORY GROWN
DIAMOND**

Shape and Cutting Style

**CUT CORNERED
RECTANGULAR MODIFIED
BRILLIANT**

Measurements

7.99 X 5.87 X 4.01 MM

GRADING RESULTS

Carat Weight

1.70 CARAT

Color Grade

G

Clarity Grade

VS 2

ADDITIONAL GRADING INFORMATION

Polish

EXCELLENT

Symmetry

EXCELLENT

Fluorescence

NONE

Inscription(s)

LABGROWN IGI LG512221592

Comments: This Laboratory Grown Diamond was created by Chemical Vapor Deposition (CVD) growth process and may include post-growth treatment.
Type IIa



January 23, 2022
IGI Report No. LG512221592
**CUT CORNERED RECT. MODIFIED
BRILLIANT X 4.01 MM**
Carat Weight 1.70 CARAT
Color Grade G
Clarity Grade VS 2
Depth 68.3%
Table 66.5%
Girdle Slightly Thick
Culet Pointed
Polish EXCELLENT
Symmetry EXCELLENT
Fluorescence NONE
Inscription(s) LABGROWN IGI LG512221592
Comments: This Laboratory Grown Diamond was created by Chemical Vapor Deposition (CVD) growth process and may include post-growth treatment.
Type IIa

