



ELECTRONIC COPY

LABORATORY GROWN DIAMOND REPORT

January 21, 2022	
IGI Report Number	LG512228332
Description	LABORATORY GROWN DIAMOND
Shape and Cutting Style	CUT CORNERED RECTANGULAR MODIFIED BRILLIANT
Measurements	8.49 X 6.30 X 4.09 MM

GRADING RESULTS

Carat Weight	2.01 CARATS
Color Grade	G
Clarity Grade	SI 2

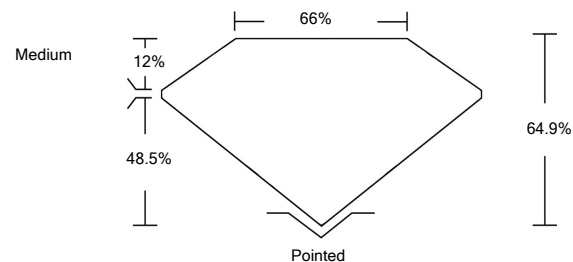
ADDITIONAL GRADING INFORMATION

Polish	VERY GOOD
Symmetry	EXCELLENT
Fluorescence	NONE
Inscription(s)	LABGROWN IGI LG512228332

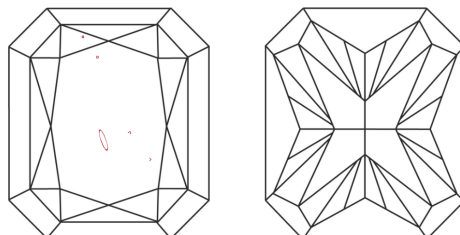
Comments: This Laboratory Grown Diamond was created by Chemical Vapor Deposition (CVD) growth process and may include post-growth treatment.
Type IIa

LG512228332

PROPORTIONS



CLARITY CHARACTERISTICS

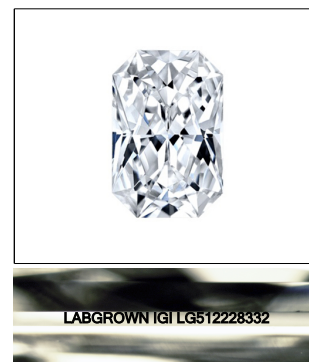


KEY TO SYMBOLS

Red symbols indicate internal characteristics.
Green symbols indicate external characteristics.

GRADING SCALES

COLOR GRADING SCALE	CL		NC		FT		VLT		LT	
	COLORLESS D-F		NEAR COLORLESS G-J		FAINT K-M		VERY LIGHT N-R		LIGHT S-Z	
CLARITY (10x) GRADING SCALE	FL IF		VVS		VS		SI		I	
	FLAWLESS INTERNALLY FLAWLESS		VERY VERY SLIGHTLY INCLUDED		VERY SLIGHTLY INCLUDED		SLIGHTLY INCLUDED		INCLUDED	



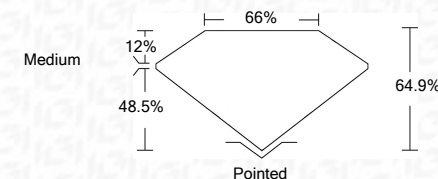
LASERSCRIBESM
Sample Image Use

LABORATORY GROWN DIAMOND REPORT

January 21, 2022	
IGI Report Number	LG512228332
Description	LABORATORY GROWN DIAMOND
Shape and Cutting Style	CUT CORNERED RECTANGULAR MODIFIED BRILLIANT
Measurements	8.49 X 6.30 X 4.09 MM

GRADING RESULTS

Carat Weight	2.01 CARATS
Color Grade	G
Clarity Grade	SI 2



ADDITIONAL GRADING INFORMATION

Polish	VERY GOOD
Symmetry	EXCELLENT
Fluorescence	NONE
Inscription(s)	LABGROWN IGI LG512228332

Comments: This Laboratory Grown Diamond was created by Chemical Vapor Deposition (CVD) growth process and may include post-growth treatment.
Type IIa



January 21, 2022	Culet Polish Symmetry Fluorescence Inscription(s) Comments:
Carat Weight Color Grade Clarity Grade Depth Table Girdle	This Laboratory Grade by Chemical Vapor process and may Type IIA Type IIA

This Laboratory Grown Diamond was created by Chemical Vapor Deposition (CVD) growth process and may include post-growth treatment.

