



**INTERNATIONAL  
GEMOLOGICAL  
INSTITUTE**

**ELECTRONIC COPY LABORATORY GROWN  
DIAMOND REPORT**

**IGI LABORATORY GROWN  
DIAMOND ID REPORT**

January 22, 2022  
IGI Report Number **LG512233029**

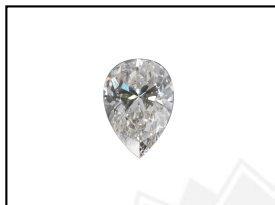
**LABORATORY GROWN DIAMOND REPORT**

**LG512233029**

**PEAR BRILLIANT**  
**7.87 X 4.78 X 3.06 MM**  
Carat Weight 0.69 CARAT  
Color Grade G  
Clarity Grade VS 1  
Polish EXCELLENT  
Symmetry EXCELLENT  
Fluorescence NONE  
Inscription(s) LABGROWN IGI  
LG512233029

**IGI LABORATORY GROWN DIAMOND IDENTIFICATION REPORT**

January 22, 2022  
IGI Report Number LG512233029  
Description LABORATORY GROWN DIAMOND  
Shape and Cutting Style PEAR BRILLIANT  
Measurements 7.87 X 4.78 X 3.06 MM



Comments: This Laboratory Grown Diamond was created by Chemical Vapor Deposition (CVD) growth process and may include post-growth treatment.  
Type IIa

**GRADING RESULTS**

Carat Weight 0.69 CARAT  
Color Grade G  
Clarity Grade VS 1

**LASERSCRIBE<sup>SM</sup>**  
Sample Images Used

**ADDITIONAL GRADING INFORMATION**

Polish EXCELLENT  
Symmetry EXCELLENT  
Fluorescence NONE  
Inscription(s) LABGROWN IGI LG512233029



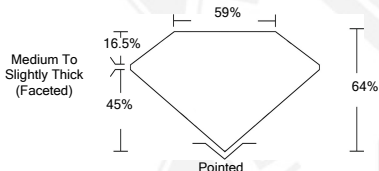
**IGI LABORATORY GROWN  
DIAMOND ID REPORT**

January 22, 2022  
IGI Report Number **LG512233029**

Comments: This Laboratory Grown Diamond was created by Chemical Vapor Deposition (CVD) growth process and may include post-growth treatment.  
Type IIa

**PEAR BRILLIANT**  
**7.87 X 4.78 X 3.06 MM**  
Carat Weight 0.69 CARAT  
Color Grade G  
Clarity Grade VS 1  
Polish EXCELLENT  
Symmetry EXCELLENT  
Fluorescence NONE  
Inscription(s) LABGROWN IGI  
LG512233029

Comments: This Laboratory Grown Diamond was created by Chemical Vapor Deposition (CVD) growth process and may include post-growth treatment.  
Type IIa



THIS DOCUMENT WAS PRODUCED WITH THE FOLLOWING SECURITY MEASURES: SPECIAL DOCUMENT PAPER, INK SCREENS, WATERMARK, BACKGROUND DESIGN, HOLOGRAM AND OTHER SECURITY FEATURES NOT LISTED AND DO EXCEED DOCUMENT SECURITY INDUSTRY GUIDELINES.

For Terms & Conditions and to verify this report, please visit [www.igi.org](http://www.igi.org)