



ELECTRONIC COPY

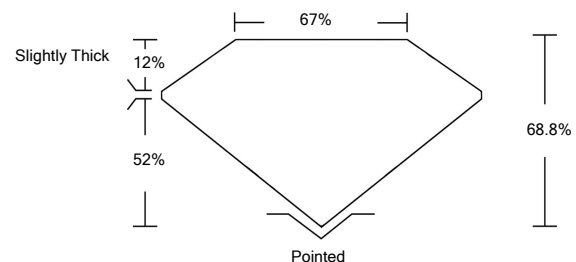
LABORATORY GROWN DIAMOND REPORT

January 22, 2022	
IGI Report Number	LG512233452
Description	LABORATORY GROWN DIAMOND
Shape and Cutting Style	CUT CORNERED RECTANGULAR MODIFIED BRILLIANT
Measurements	8.11 X 6.50 X 4.47 MM
GRADING RESULTS	
Carat Weight	2.04 CARATS
Color Grade	D
Clarity Grade	SI 2
ADDITIONAL GRADING INFORMATION	
Polish	EXCELLENT
Symmetry	EXCELLENT
Fluorescence	NONE
Inscription(s)	LABGROWN IGI LG512233452

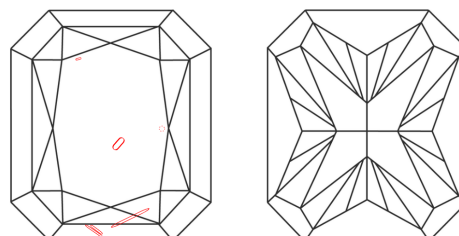
Comments: As Grown - No indication of post-growth treatment.
This Laboratory Grown Diamond was created by High Pressure High Temperature (HPHT) growth process.
Type II

LG512233452

PROPORTIONS



CLARITY CHARACTERISTICS

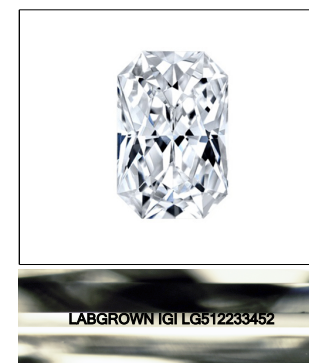


KEY TO SYMBOLS

Red symbols indicate internal characteristics.
Green symbols indicate external characteristics.

GRADING SCALES

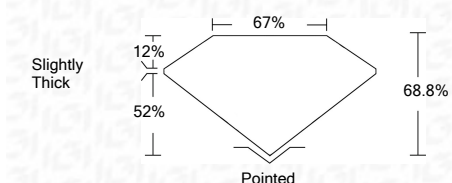
COLOR GRADING SCALE	CL	NC	FT	VLT	LT	
	COLORLESS D-F	NEAR COLORLESS G-J	FAINT K-M	VERY LIGHT N-R	LIGHT S-Z	
CLARITY (10x) GRADING SCALE	FL	IF	VVS	VS	SI	I
	FLAWLESS INTERNALLY FLAWLESS	VERY VERY SLIGHTLY INCLUDED	VERY SLIGHTLY INCLUDED	SLIGHTLY INCLUDED	INCLUDED	



LASERSCRIBESM

Sample Image Used

January 22, 2022	
IGI Report Number	LG512233452
Description	LABORATORY GROWN DIAMOND
Shape and Cutting Style	CUT CORNERED RECTANGULAR MODIFIED BRILLIANT
Measurements	8.11 X 6.50 X 4.47 MM
GRADING RESULTS	
Carat Weight	2.04 CARATS
Color Grade	D
Clarity Grade	SI 2



ADDITIONAL GRADING INFORMATION

Polish	EXCELLENT
Symmetry	EXCELLENT
Fluorescence	NONE
Inscription(s)	LABGROWN IGI LG512233452

Comments: As Grown - No indication of post-growth treatment.
This Laboratory Grown Diamond was created by High Pressure High Temperature (HPHT) growth process.
Type II



IGI



January 22, 2022	
IGI Report No. LG512233452	
CUT CORNERED RECT. MODIFIED BRILLIANT	
8.11 X 6.50 X 4.47 MM	
2.04 CARATS	
D	
SI 2	
68.8%	
67%	
Slightly Thick	
Pointed	
EXCELLENT	
EXCELLENT	
NONE	
LABGROWN IGI LG512233452	
Comments:	

As Grown - No indication of post-growth treatment.
This Laboratory Grown Diamond was created by High Pressure High Temperature (HPHT) growth process.
Type II