

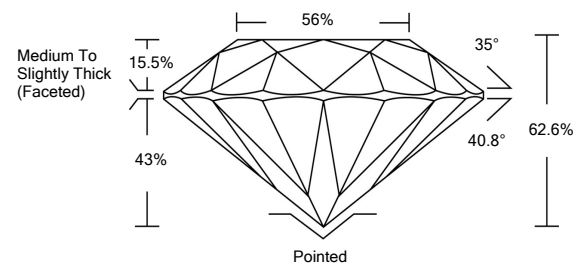


ELECTRONIC COPY

LG514253673

LABORATORY GROWN DIAMOND REPORT

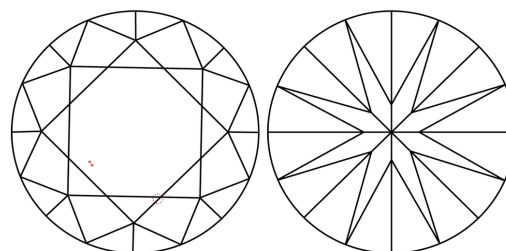
PROPORTIONS



GRADING SCALES

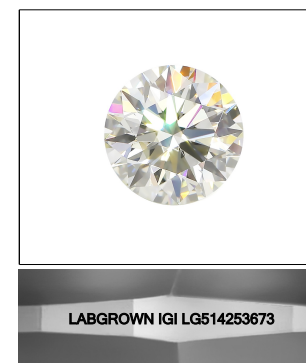
COLOR GRADING SCALE	CL	NC	FT	VLT	LT	
	COLORLESS D-F	NEAR COLORLESS G-J	FAINT K-M	VERY LIGHT N-R	LIGHT S-Z	
CLARITY (10x) GRADING SCALE	FL	IF	VVS	VS	SI	I
	FLAWLESS INTERNALLY FLAWLESS	VERY VERY SLIGHTLY INCLUDED	VERY SLIGHTLY INCLUDED	SLIGHTLY INCLUDED	INCLUDED	

CLARITY CHARACTERISTICS



KEY TO SYMBOLS

Red symbols indicate internal characteristics.
Green symbols indicate external characteristics.



LASERSCRIBESM

Sample Image Used

January 24, 2022

IGI Report Number

LG514253673

Description

**LABORATORY GROWN
DIAMOND**

Shape and Cutting Style

ROUND BRILLIANT

Measurements

6.77 - 6.82 X 4.25 MM

GRADING RESULTS

Carat Weight

1.21 CARAT

Color Grade

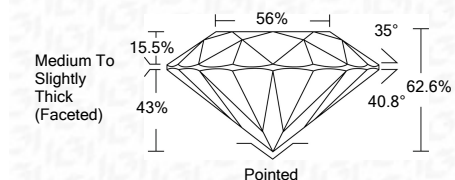
D

Clarity Grade

VS 1

Cut Grade

EXCELLENT



ADDITIONAL GRADING INFORMATION

Polish

EXCELLENT

Symmetry

EXCELLENT

Fluorescence

NONE

Inscription(s)

LABGROWN IGI LG514253673

Comments: As Grown - No indication of post-growth treatment.
This Laboratory Grown Diamond was created by High Pressure High Temperature (HPHT) growth process.
Type II



IGI



IGI Report No. LG514253673	1.21 CARAT	D	Pointed
ROUND BRILLIANT	VS 1	EXCELLENT	EXCELLENT
6.77 - 6.82 X 4.25 MM	EXCELLENT	62.6%	EXCELLENT
Carat Weight	56%	Medium To Slightly Thick (Faceted)	
Color Grade			
Clarity Grade			
Cut Grade			
Table			
Girdle			
Culet			
Polish			
Symmetry			
Fluorescence			
Inscription(s)			

Comments: As Grown - No indication of post-growth treatment.
This Laboratory Grown Diamond was created by High Pressure High Temperature (HPHT) growth process.
Type II