



**ELECTRONIC COPY**

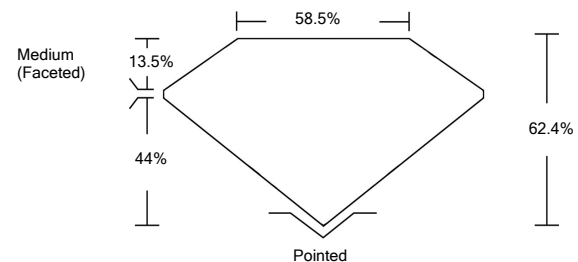
**LABORATORY GROWN DIAMOND REPORT**

|                                       |                                     |
|---------------------------------------|-------------------------------------|
| February 18, 2022                     |                                     |
| IGI Report Number                     | <b>LG514259133</b>                  |
| Description                           | <b>LABORATORY GROWN<br/>DIAMOND</b> |
| Shape and Cutting Style               | <b>OVAL BRILLIANT</b>               |
| Measurements                          | <b>9.56 X 6.68 X 4.17 MM</b>        |
| <b>GRADING RESULTS</b>                |                                     |
| Carat Weight                          | <b>1.61 CARAT</b>                   |
| Color Grade                           | <b>H</b>                            |
| Clarity Grade                         | <b>VS 1</b>                         |
| <b>ADDITIONAL GRADING INFORMATION</b> |                                     |
| Polish                                | <b>EXCELLENT</b>                    |
| Symmetry                              | <b>EXCELLENT</b>                    |
| Fluorescence                          | <b>NONE</b>                         |
| Inscription(s)                        | <b>LABGROWN IGI LG514259133</b>     |

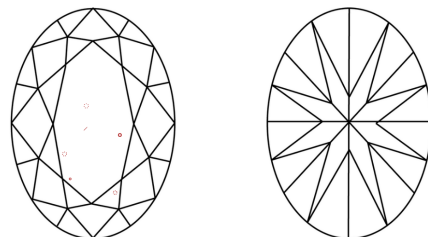
Comments: This Laboratory Grown Diamond was created by Chemical Vapor Deposition (CVD) growth process and may include post-growth treatment.  
Type IIa

LG514259133

**PROPORTIONS**



**CLARITY CHARACTERISTICS**



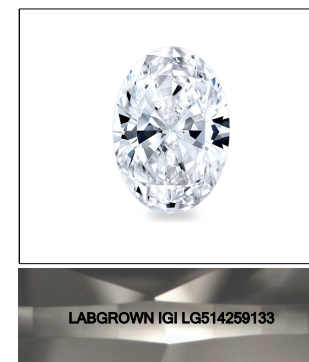
**KEY TO SYMBOLS**

Red symbols indicate internal characteristics.  
Green symbols indicate external characteristics.

**LABORATORY GROWN  
DIAMOND REPORT**

**GRADING SCALES**

|                             |                              |                             |                        |                   |           |   |
|-----------------------------|------------------------------|-----------------------------|------------------------|-------------------|-----------|---|
| COLOR GRADING SCALE         | CL                           | NC                          | FT                     | VL                | LT        |   |
|                             | COLORLESS D-F                | NEAR COLORLESS G-J          | FAINT K-M              | VERY LIGHT N-R    | LIGHT S-Z |   |
| CLARITY (10x) GRADING SCALE | FL                           | IF                          | VVS                    | VS                | SI        | I |
|                             | FLAWLESS INTERNALLY FLAWLESS | VERY VERY SLIGHTLY INCLUDED | VERY SLIGHTLY INCLUDED | SLIGHTLY INCLUDED | INCLUDED  |   |

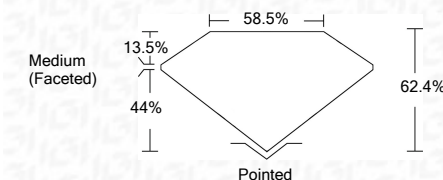


**LASERSCRIBE<sup>SM</sup>**

Sample Image Used

**LABORATORY GROWN DIAMOND REPORT**

|                         |                                     |
|-------------------------|-------------------------------------|
| February 18, 2022       |                                     |
| IGI Report Number       | <b>LG514259133</b>                  |
| Description             | <b>LABORATORY GROWN<br/>DIAMOND</b> |
| Shape and Cutting Style | <b>OVAL BRILLIANT</b>               |
| Measurements            | <b>9.56 X 6.68 X 4.17 MM</b>        |
| <b>GRADING RESULTS</b>  |                                     |
| Carat Weight            | <b>1.61 CARAT</b>                   |
| Color Grade             | <b>H</b>                            |
| Clarity Grade           | <b>VS 1</b>                         |



**ADDITIONAL GRADING INFORMATION**

|                |                                 |
|----------------|---------------------------------|
| Polish         | <b>EXCELLENT</b>                |
| Symmetry       | <b>EXCELLENT</b>                |
| Fluorescence   | <b>NONE</b>                     |
| Inscription(s) | <b>LABGROWN IGI LG514259133</b> |

Comments: This Laboratory Grown Diamond was created by Chemical Vapor Deposition (CVD) growth process and may include post-growth treatment.  
Type IIa



**IGI**

|                              |                                 |
|------------------------------|---------------------------------|
| February 18, 2022            |                                 |
| IGI Report No. LG514259133   |                                 |
| <b>OVAL BRILLIANT</b>        |                                 |
| <b>9.56 X 6.68 X 4.17 MM</b> |                                 |
| Carat Weight                 | <b>1.61 CARAT</b>               |
| Color Grade                  | <b>H</b>                        |
| Clarity Grade                | <b>VS 1</b>                     |
| Depth                        | <b>62.4%</b>                    |
| Table                        | <b>58.5%</b>                    |
| Grade                        | <b>Medium (Faceted)</b>         |
| Culet                        | <b>Pointed</b>                  |
| Polish                       | <b>EXCELLENT</b>                |
| Symmetry                     | <b>EXCELLENT</b>                |
| Fluorescence                 | <b>NONE</b>                     |
| Inscription(s)               | <b>LABGROWN IGI LG514259133</b> |
| Comments:                    |                                 |

This Laboratory Grown Diamond was created by Chemical Vapor Deposition (CVD) growth process and may include post-growth treatment.  
Type IIa

