



ELECTRONIC COPY

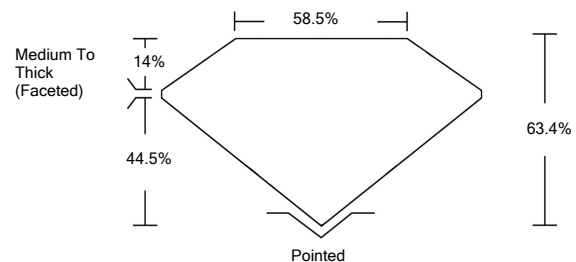
LABORATORY GROWN DIAMOND REPORT

January 29, 2022	
IGI Report Number	LG514267774
Description	LABORATORY GROWN DIAMOND
Shape and Cutting Style	OVAL BRILLIANT
Measurements	8.97 X 6.55 X 4.15 MM
GRADING RESULTS	
Carat Weight	1.52 CARAT
Color Grade	H
Clarity Grade	VVS 2
ADDITIONAL GRADING INFORMATION	
Polish	VERY GOOD
Symmetry	EXCELLENT
Fluorescence	NONE
Inscription(s)	LABGROWN IGI LG514267774

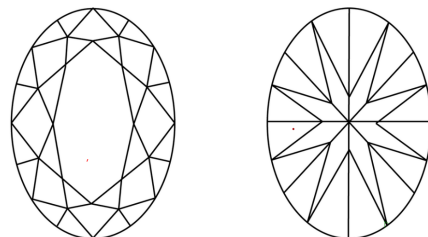
Comments: As Grown - No indication of post-growth treatment.
This Laboratory Grown Diamond was created by High Pressure High Temperature (HPHT) growth process. Type II

LG514267774

PROPORTIONS



CLARITY CHARACTERISTICS

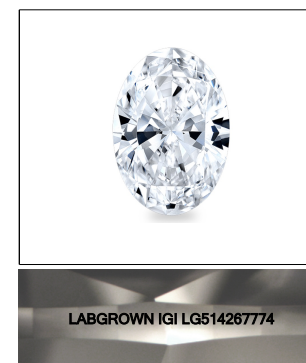


KEY TO SYMBOLS

Red symbols indicate internal characteristics.
Green symbols indicate external characteristics.

GRADING SCALES

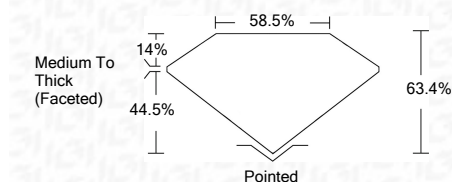
COLOR GRADING SCALE	CL	NC	FT	VLT	LT	
	COLORLESS D-F	NEAR COLORLESS G-J	FAINT K-M	VERY LIGHT N-R	LIGHT S-Z	
CLARITY (10x) GRADING SCALE	FL	IF	VVS	VS	SI	I
	FLAWLESS INTERNALLY FLAWLESS	VERY VERY SLIGHTLY INCLUDED	VERY SLIGHTLY INCLUDED	SLIGHTLY INCLUDED	INCLUDED	



LASERSCRIBESM

Sample Image Used

January 29, 2022	
IGI Report Number	LG514267774
Description	LABORATORY GROWN DIAMOND
Shape and Cutting Style	OVAL BRILLIANT
Measurements	8.97 X 6.55 X 4.15 MM
GRADING RESULTS	
Carat Weight	1.52 CARAT
Color Grade	H
Clarity Grade	VVS 2



ADDITIONAL GRADING INFORMATION

Polish	VERY GOOD
Symmetry	EXCELLENT
Fluorescence	NONE
Inscription(s)	LABGROWN IGI LG514267774

Comments: As Grown - No indication of post-growth treatment.
This Laboratory Grown Diamond was created by High Pressure High Temperature (HPHT) growth process. Type II



IGI

January 29, 2022	
IGI Report No. LG514267774	
OVAL BRILLIANT	
8.97 X 6.55 X 4.15 MM	
Carat Weight	1.52 CARAT
Color Grade	H
Clarity Grade	VVS 2
Depth	63.4%
Table	14%
Girdle	Medium To Thick (Faceted)
Culet	Pointed
Polish	VERY GOOD
Symmetry	EXCELLENT
Fluorescence	NONE
Inscription(s)	LABGROWN IGI LG514267774
Comments:	As Grown - No indication of post-growth treatment. This Laboratory Grown Diamond was created by High Pressure High Temperature (HPHT) growth process. Type II