



**ELECTRONIC COPY**

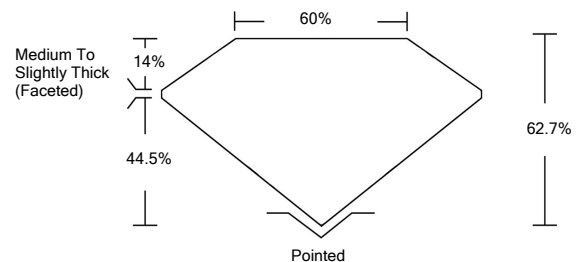
**LABORATORY GROWN DIAMOND REPORT**

|                                       |                                     |
|---------------------------------------|-------------------------------------|
| January 29, 2022                      |                                     |
| IGI Report Number                     | <b>LG514270113</b>                  |
| Description                           | <b>LABORATORY GROWN<br/>DIAMOND</b> |
| Shape and Cutting Style               | <b>OVAL BRILLIANT</b>               |
| Measurements                          | <b>10.00 X 7.24 X 4.54 MM</b>       |
| <b>GRADING RESULTS</b>                |                                     |
| Carat Weight                          | <b>2.01 CARATS</b>                  |
| Color Grade                           | <b>E</b>                            |
| Clarity Grade                         | <b>VS 1</b>                         |
| <b>ADDITIONAL GRADING INFORMATION</b> |                                     |
| Polish                                | <b>EXCELLENT</b>                    |
| Symmetry                              | <b>EXCELLENT</b>                    |
| Fluorescence                          | <b>NONE</b>                         |
| Inscription(s)                        | <b>LABGROWN IGI LG514270113</b>     |

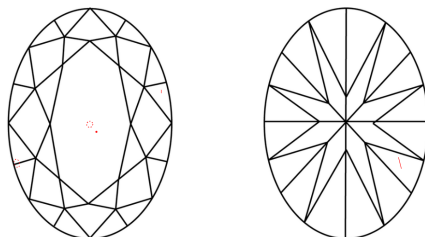
Comments: As Grown - No indication of post-growth treatment.  
This Laboratory Grown Diamond was created by High Pressure High Temperature (HPHT) growth process. Type II

LG514270113

**PROPORTIONS**



**CLARITY CHARACTERISTICS**

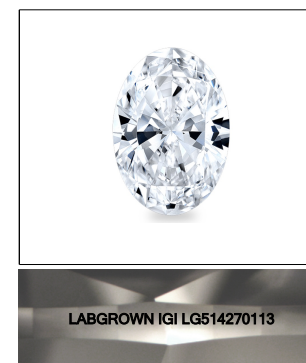


**KEY TO SYMBOLS**

Red symbols indicate internal characteristics.  
Green symbols indicate external characteristics.

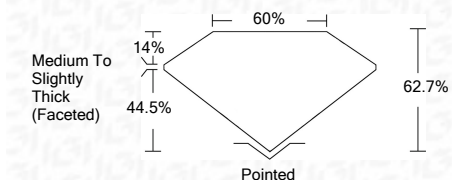
**GRADING SCALES**

|                             |                              |                             |                        |                   |           |   |
|-----------------------------|------------------------------|-----------------------------|------------------------|-------------------|-----------|---|
| COLOR GRADING SCALE         | CL                           | NC                          | FT                     | VLT               | LT        |   |
|                             | COLORLESS D-F                | NEAR COLORLESS G-J          | FAINT K-M              | VERY LIGHT N-R    | LIGHT S-Z |   |
| CLARITY (10x) GRADING SCALE | FL                           | IF                          | VVS                    | VS                | SI        | I |
|                             | FLAWLESS INTERNALLY FLAWLESS | VERY VERY SLIGHTLY INCLUDED | VERY SLIGHTLY INCLUDED | SLIGHTLY INCLUDED | INCLUDED  |   |



**LASERSCRIBE<sup>SM</sup>**  
Sample Image Used

|                         |                                     |
|-------------------------|-------------------------------------|
| January 29, 2022        |                                     |
| IGI Report Number       | <b>LG514270113</b>                  |
| Description             | <b>LABORATORY GROWN<br/>DIAMOND</b> |
| Shape and Cutting Style | <b>OVAL BRILLIANT</b>               |
| Measurements            | <b>10.00 X 7.24 X 4.54 MM</b>       |
| <b>GRADING RESULTS</b>  |                                     |
| Carat Weight            | <b>2.01 CARATS</b>                  |
| Color Grade             | <b>E</b>                            |
| Clarity Grade           | <b>VS 1</b>                         |



**ADDITIONAL GRADING INFORMATION**

|                |                                 |
|----------------|---------------------------------|
| Polish         | <b>EXCELLENT</b>                |
| Symmetry       | <b>EXCELLENT</b>                |
| Fluorescence   | <b>NONE</b>                     |
| Inscription(s) | <b>LABGROWN IGI LG514270113</b> |

Comments: As Grown - No indication of post-growth treatment.  
This Laboratory Grown Diamond was created by High Pressure High Temperature (HPHT) growth process. Type II



**IGI**

|                               |  |
|-------------------------------|--|
| January 29, 2022              |  |
| IGI Report No. LG514270113    |  |
| <b>OVAL BRILLIANT</b>         |  |
| <b>10.00 X 7.24 X 4.54 MM</b> |  |
| Carat Weight                  | <b>2.01 CARATS</b>   |
| Color Grade                   | <b>E</b>   |
| Clarity Grade                 | <b>VS 1</b>  |
| Depth                         | <b>62.7%</b>   |
| Table                         | <b>60%</b>   |
| Girdle                        | <b>Medium To Slightly Thick (Faceted)</b>  |
| Culet                         | <b>Pointed</b>   |
| Polish                        | <b>EXCELLENT</b>   |
| Symmetry                      | <b>EXCELLENT</b>   |
| Fluorescence                  | <b>NONE</b>  |
| Inscription(s)                | <b>LABGROWN IGI LG514270113</b>  |
| Comments:                     | <b>As Grown - No indication of post-growth treatment. This Laboratory Grown Diamond was created by High Pressure High Temperature (HPHT) growth process. Type II</b> |

