



ELECTRONIC COPY

LABORATORY GROWN DIAMOND REPORT

February 9, 2022	
IGI Report Number	LG514290365
Description	LABORATORY GROWN DIAMOND
Shape and Cutting Style	SQUARE CUSHION BRILLIANT
Measurements	6.83 X 6.57 X 4.54 MM
GRADING RESULTS	
Carat Weight	1.53 CARAT
Color Grade	D
Clarity Grade	VS 1
ADDITIONAL GRADING INFORMATION	
Polish	EXCELLENT
Symmetry	EXCELLENT
Fluorescence	NONE
Inscription(s)	LABGROWN IGI LG514290365

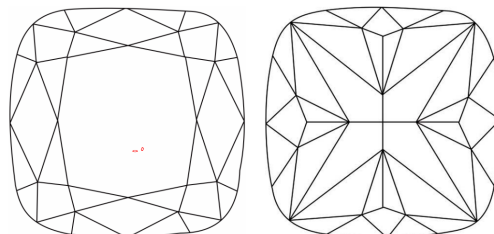
Comments: As Grown - No indication of post-growth treatment.

This Laboratory Grown Diamond was created by High Pressure High Temperature (HPHT) growth process.
Type II

Diagram illustrating the proportions of a diamond-shaped gemstone (LG514290365) with a Medium (Faceted) cut. The proportions are defined by the following measurements:

- Top Width:** 59%
- Top Height:** 16%
- Bottom Height:** 50.5%
- Total Height:** 69.1%
- Pointed Bottom:** Indicated by a small triangle at the bottom center.

CLARITY CHARACTERISTICS



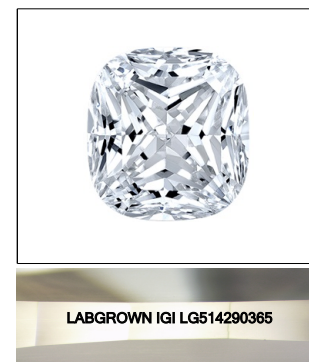
KEY TO SYMBOLS

Red symbols indicate internal characteristics.
Green symbols indicate external characteristics.

LABORATORY GROWN
DIAMOND REPORT

GRADING SCALES

COLOR GRADING SCALE	CL		NC		FT		VLT		LT	
	COLORLESS D-F		NEAR COLORLESS G-J		FAINT K-M		VERY LIGHT N-R		LIGHT S-Z	
CLARITY (10x) GRADING SCALE	FL	IF	VVS		VS		SI		I	
	FLAWLESS INTERNALLY FL & W/ FSS		VERY VERY SLIGHTLY INCLUDED		VERY SLIGHTLY INCLUDED		SLIGHTLY INCLUDED		INCLUDED	

LASERSCRIBESM

Sample Image Used

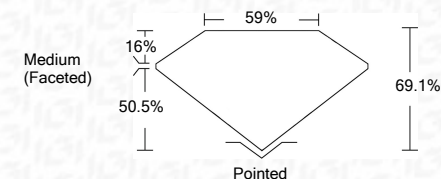


© IGI 2020, International Gemological Institute

FD - 10 20

LABORATORY GROWN DIAMOND REPORT

February 9, 2022	
IGI Report Number	LG514290365
Description	LABORATORY GROWN DIAMOND
Shape and Cutting Style	SQUARE CUSHION BRILLIANT
Measurements	6.83 X 6.57 X 4.54 MM
GRADING RESULTS	
Carat Weight	1.53 CARAT
Color Grade	D
Clarity Grade	VS 1



ADDITIONAL GRADING INFORMATION

Polish	EXCELLENT
Symmetry	EXCELLENT
Fluorescence	NONE
Inscription(s)	LABGROWN IGI LG514290365

Comments: As Grown - No indication of post-growth treatment.
This Laboratory Grown Diamond was created by High Pressure High Temperature (HPHT) growth process.
Type II



February 9, 2022	As Group - No indication of post-growth treatment.
IGI Report No. IGS4290385	This Laboratory Grown Diamond was created by High Pressure High Temperature (HPHT) growth process.
SQUARE CUSHION BRILLIANT	None
1.13 CARAT	None
D	LAGROWN IGI LGS4290385
VS 1	Pointed
69.1%	EXCELLENT
59%	EXCELLENT
Medium (Faceted)	
Clarity Grade	Clarity
Depth	Polish
Table	Symmetry
Circle	Fluorescence
	Inscriptions(s)
	Comments:

As Grown - No indication of post-growth treatment.