



**INTERNATIONAL  
GEMOLOGICAL  
INSTITUTE**

**ELECTRONIC COPY**

**LABORATORY GROWN  
DIAMOND REPORT**

**IGI LABORATORY GROWN  
DIAMOND ID REPORT**

February 3, 2022  
IGI Report Number **LG515203310**

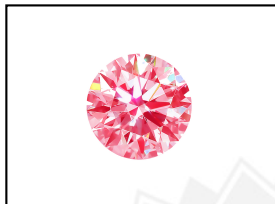
**LABORATORY GROWN DIAMOND REPORT**

**LG515203310**

**ROUND BRILLIANT**  
**5.45 - 5.51 X 3.34 MM**  
Carat Weight 0.63 CARAT  
Color Grade FANCY VIVID PINK  
Clarity Grade VS 2  
Cut Grade VERY GOOD  
Polish GOOD  
Symmetry GOOD  
Fluorescence STRONG  
Inscription(s) LABGROWN IGI  
LG515203310

**IGI LABORATORY GROWN DIAMOND IDENTIFICATION REPORT**

February 3, 2022  
IGI Report Number LG515203310  
Description LABORATORY GROWN DIAMOND  
Shape and Cutting Style ROUND BRILLIANT  
Measurements 5.45 - 5.51 X 3.34 MM



**LABGROWN IGI LG515203310**

Comments: This Laboratory Grown Diamond was created by Chemical Vapor Deposition (CVD) growth process.  
Indications of post-growth treatment.

**GRADING RESULTS**

Carat Weight 0.63 CARAT  
Color Grade FANCY VIVID PINK  
Clarity Grade VS 2  
Cut Grade VERY GOOD

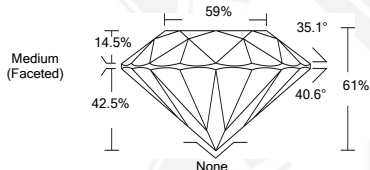
**LASERSCRIBE<sup>SM</sup>**  
Sample Images Used



**ADDITIONAL GRADING INFORMATION**

Polish GOOD  
Symmetry GOOD  
Fluorescence STRONG  
Inscription(s) LABGROWN IGI LG515203310

Comments: This Laboratory Grown Diamond was created by Chemical Vapor Deposition (CVD) growth process.  
Indications of post-growth treatment.



**IGI LABORATORY GROWN  
DIAMOND ID REPORT**

February 3, 2022  
IGI Report Number **LG515203310**

**ROUND BRILLIANT**  
**5.45 - 5.51 X 3.34 MM**  
Carat Weight 0.63 CARAT  
Color Grade FANCY VIVID PINK  
Clarity Grade VS 2  
Cut Grade VERY GOOD  
Polish GOOD  
Symmetry GOOD  
Fluorescence STRONG  
Inscription(s) LABGROWN IGI  
LG515203310

Comments: This Laboratory Grown Diamond was created by Chemical Vapor Deposition (CVD) growth process.  
Indications of post-growth treatment.

THIS DOCUMENT WAS PRODUCED WITH THE FOLLOWING SECURITY MEASURES: SPECIAL DOCUMENT PAPER, INK SCREENS, WATERMARK, BACKGROUND DESIGN, HOLOGRAM AND OTHER SECURITY FEATURES NOT LISTED AND DO EXCEEDED DOCUMENT SECURITY INDUSTRY GUIDELINES.

For Terms & Conditions and to verify this report, please visit [www.igi.org](http://www.igi.org)