



ELECTRONIC COPY

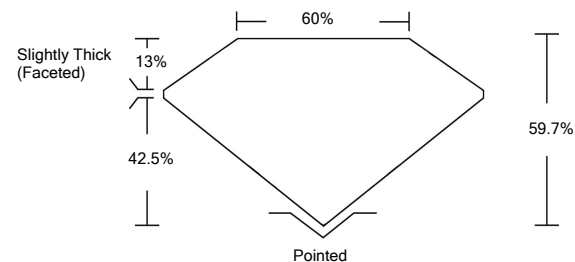
LABORATORY GROWN DIAMOND REPORT

February 15, 2022	
IGI Report Number	LG515205169
Description	LABORATORY GROWN DIAMOND
Shape and Cutting Style	HEART BRILLIANT
Measurements	9.23 X 10.03 X 5.99 MM
GRADING RESULTS	
Carat Weight	3.32 CARATS
Color Grade	FANCY INTENSE PINK
Clarity Grade	VVS 2
ADDITIONAL GRADING INFORMATION	
Polish	EXCELLENT
Symmetry	EXCELLENT
Fluorescence	STRONG
Inscription(s)	LABGROWN IGI LG515205169

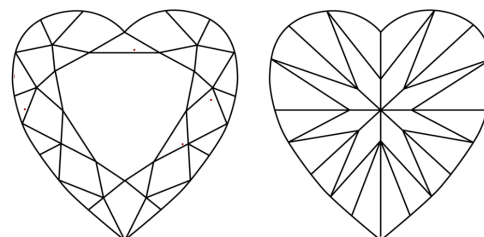
Comments: This Laboratory Grown Diamond was created by Chemical Vapor Deposition (CVD) growth process. Indications of post-growth treatment.

LG515205169

PROPORTIONS



CLARITY CHARACTERISTICS



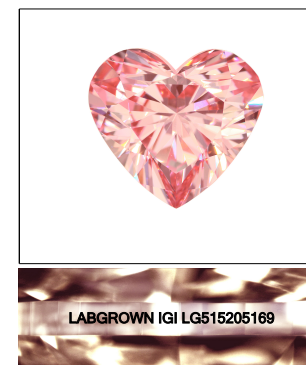
KEY TO SYMBOLS

Red symbols indicate internal characteristics.
Green symbols indicate external characteristics.

**LABORATORY GROWN
DIAMOND REPORT**

GRADING SCALES

COLOR GRADING SCALE	CL	NC	FT	VLT	LT	
	COLORLESS D-F	NEAR COLORLESS G-J	FAINT K-M	VERY LIGHT N-R	LIGHT S-Z	
CLARITY (10x) GRADING SCALE	FL	IF	VVS	VS	SI	I
	FLAWLESS INTERNALLY FLAWLESS	VERY VERY SLIGHTLY INCLUDED	VERY SLIGHTLY INCLUDED	SLIGHTLY INCLUDED	INCLUDED	

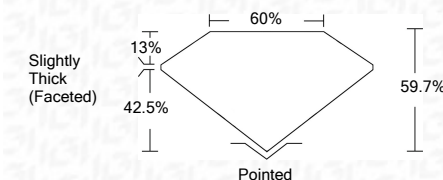


LASERSCRIBESM

Sample Image Used

LABORATORY GROWN DIAMOND REPORT

February 15, 2022	
IGI Report Number	LG515205169
Description	LABORATORY GROWN DIAMOND
Shape and Cutting Style	HEART BRILLIANT
Measurements	9.23 X 10.03 X 5.99 MM
GRADING RESULTS	
Carat Weight	3.32 CARATS
Color Grade	FANCY INTENSE PINK
Clarity Grade	VVS 2



ADDITIONAL GRADING INFORMATION

Polish	EXCELLENT
Symmetry	EXCELLENT
Fluorescence	STRONG
Inscription(s)	LABGROWN IGI LG515205169

Comments: This Laboratory Grown Diamond was created by Chemical Vapor Deposition (CVD) growth process. Indications of post-growth treatment.



February 15, 2022	
IGI Report No. LG515205169	
HEART BRILLIANT	
9.23 X 10.03 X 5.99 MM	
3.32 CARATS	
Carat Weight	
FANCY INTENSE PINK	
Color Grade	
VVS 2	
Clarity Grade	
59.7%	
Depth	
60%	
Table	
Slightly Thick (Faceted)	
Grade	
Pointed	
Polish	EXCELLENT
Symmetry	EXCELLENT
Fluorescence	STRONG
Inscription(s)	LABGROWN IGI LG515205169
Comments:	
This Laboratory Grown Diamond was created by Chemical Vapor Deposition (CVD) growth process. Indications of post-growth treatment.	