



**ELECTRONIC COPY**

**LABORATORY GROWN DIAMOND REPORT**

February 14, 2022  
 IGI Report Number **LG515207120**  
 Description **LABORATORY GROWN  
DIAMOND**  
 Shape and Cutting Style **ROUND BRILLIANT**  
 Measurements **5.84 - 5.87 X 3.70 MM**

**GRADING RESULTS**

Carat Weight **0.77 CARAT**  
 Color Grade **D**  
 Clarity Grade **SI 1**  
 Cut Grade **EXCELLENT**

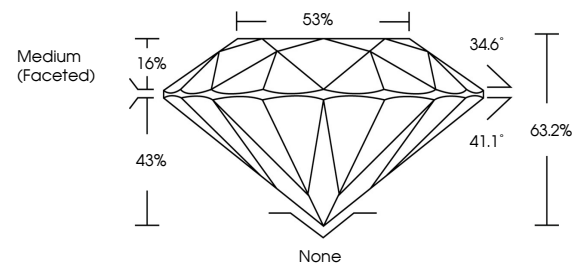
**ADDITIONAL GRADING INFORMATION**

Polish **VERY GOOD**  
 Symmetry **EXCELLENT**  
 Fluorescence **NONE**  
 Inscription(s) **LABGROWN IGI LG515207120**

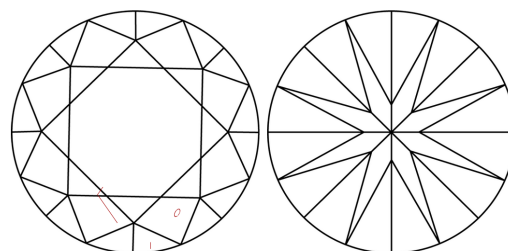
Comments: As Grown - No indication of post-growth treatment  
 This Laboratory Grown Diamond was created by High Pressure High Temperature (HPHT) growth process Type II

LG515207120

**PROPORTIONS**



**CLARITY CHARACTERISTICS**

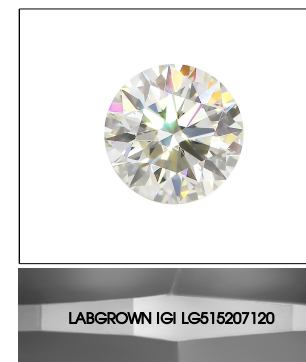


**KEY TO SYMBOLS**

Red symbols indicate internal characteristics.  
 Green symbols indicate external characteristics.

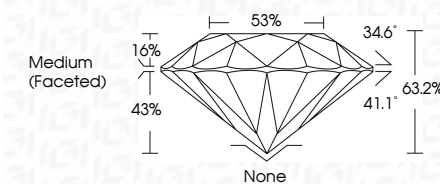
**GRADING SCALES**

COLOR GRADING SCALE	CL	NC	FT	VLT	LT	
	COLORLESS D-F	NEAR COLORLESS G-J	FAINT K-M	VERY LIGHT N-R	LIGHT S-Z	
CLARITY (10x) GRADING SCALE	FL	IF	VVS	VS	SI	I
	FLAWLESS INTERNALLY FLAWLESS	VERY VERY SLIGHTLY INCLUDED	VERY SLIGHTLY INCLUDED	SLIGHTLY INCLUDED	INCLUDED	



**LASERSCRIBE<sup>SM</sup>**  
 Sample Image Used

February 14, 2022  
 IGI Report Number **LG515207120**  
 Description **LABORATORY GROWN  
DIAMOND**  
 Shape and Cutting Style **ROUND BRILLIANT**  
 Measurements **5.84 - 5.87 X 3.70 MM**  
**GRADING RESULTS**  
 Carat Weight **0.77 CARAT**  
 Color Grade **D**  
 Clarity Grade **SI 1**  
 Cut Grade **EXCELLENT**



**ADDITIONAL GRADING INFORMATION**

Polish **VERY GOOD**  
 Symmetry **EXCELLENT**  
 Fluorescence **NONE**  
 Inscription(s) **LABGROWN IGI LG515207120**

Comments: As Grown - No indication of post-growth treatment  
 This Laboratory Grown Diamond was created by High Pressure High Temperature (HPHT) growth process Type II



**IGI**

February 14, 2022  
 IGI Report No LG515207120  
**ROUND BRILLIANT**  
**5.84 - 5.87 X 3.70 MM**  
 Carat Weight **0.77 CARAT**  
 Color Grade **D**  
 Clarity Grade **SI 1**  
 Cut Grade **EXCELLENT**  
 Depth **63.2%**  
 Table **53%**  
 Girdle **Medium (Faceted)**  
 Culet **None**  
 Polish **VERY GOOD**  
 Symmetry **EXCELLENT**  
 Fluorescence **NONE**  
 Inscription(s) **LABGROWN IGI LG515207120**  
 Comments: **As Grown - No indication of post-growth treatment**  
 This Laboratory Grown Diamond was created by High Pressure High Temperature (HPHT) growth process Type II

