



ELECTRONIC COPY

LABORATORY GROWN DIAMOND REPORT

February 11, 2022
 IGI Report Number **LG515207494**
 Description **LABORATORY GROWN
DIAMOND**
 Shape and Cutting Style **ROUND BRILLIANT**
 Measurements **5.25 - 5.28 X 3.30 MM**

GRADING RESULTS

Carat Weight **0.57 CARAT**
 Color Grade **D**
 Clarity Grade **VVS 2**
 Cut Grade **VERY GOOD**

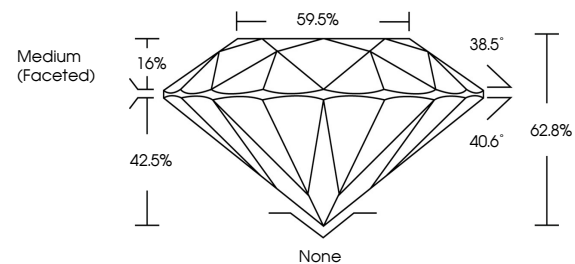
ADDITIONAL GRADING INFORMATION

Polish **VERY GOOD**
 Symmetry **VERY GOOD**
 Fluorescence **NONE**
 Inscription(s) **LABGROWN IGI LG515207494**

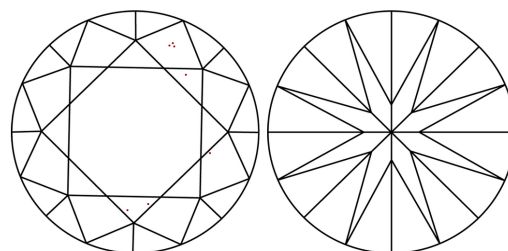
Comments: As Grown - No indication of post-growth treatment
 This Laboratory Grown Diamond was created by High Pressure High Temperature (HPHT) growth process Type II

LG515207494

PROPORTIONS



CLARITY CHARACTERISTICS

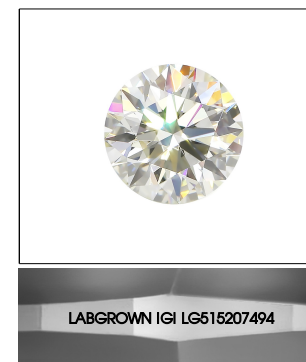


KEY TO SYMBOLS

Red symbols indicate internal characteristics.
 Green symbols indicate external characteristics.

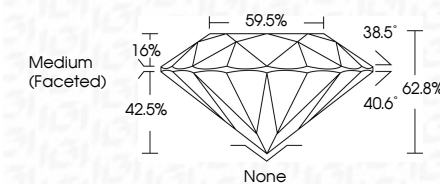
GRADING SCALES

COLOR GRADING SCALE	CL	NC	FT	VL	LT	
	COLORLESS D-F	NEAR COLORLESS G-J	FAINT K-M	VERY LIGHT N-R	LIGHT S-Z	
CLARITY (10x) GRADING SCALE	FL	IF	VVS	VS	SI	I
	FLAWLESS INTERNALLY FLAWLESS	VERY VERY SLIGHTLY INCLUDED	VERY SLIGHTLY INCLUDED	SLIGHTLY INCLUDED	INCLUDED	



LASERSCRIBESM
 Sample Image Used

February 11, 2022
 IGI Report Number **LG515207494**
 Description **LABORATORY GROWN
DIAMOND**
 Shape and Cutting Style **ROUND BRILLIANT**
 Measurements **5.25 - 5.28 X 3.30 MM**
GRADING RESULTS
 Carat Weight **0.57 CARAT**
 Color Grade **D**
 Clarity Grade **VVS 2**
 Cut Grade **VERY GOOD**



ADDITIONAL GRADING INFORMATION

Polish **VERY GOOD**
 Symmetry **VERY GOOD**
 Fluorescence **NONE**
 Inscription(s) **LABGROWN IGI LG515207494**

Comments: As Grown - No indication of post-growth treatment
 This Laboratory Grown Diamond was created by High Pressure High Temperature (HPHT) growth process Type II



IGI

February 11, 2022
 IGI Report No LG515207494
ROUND BRILLIANT
5.25 - 5.28 X 3.30 MM
 Carat Weight **0.57 CARAT**
 Color Grade **D**
 Clarity Grade **VVS 2**
 Cut Grade **VERY GOOD**
 Depth **62.8%**
 Table **1.6%**
 Girdle **Medium (Faceted)**
 Culet **None**
 Polish **VERY GOOD**
 Symmetry **VERY GOOD**
 Fluorescence **NONE**
 Inscription(s) **LABGROWN IGI LG515207494**
 Comments: **As Grown - No indication of post-growth treatment**
 This Laboratory Grown Diamond was created by High Pressure High Temperature (HPHT) growth process Type II

