

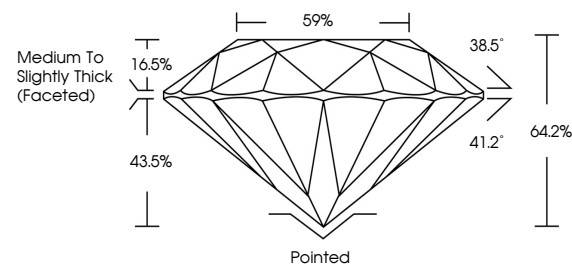


ELECTRONIC COPY

LABORATORY GROWN DIAMOND REPORT

LG515207515

PROPORTIONS



GRADING SCALES

| | | | | | | |
|-----------------------------|------------------------------|-----------------------------|------------------------|-------------------|-----------|---|
| COLOR GRADING SCALE | CL | NC | FT | VL | LT | |
| | COLORLESS D-F | NEAR COLORLESS G-J | FAINT K-M | VERY LIGHT N-R | LIGHT S-Z | |
| CLARITY (10x) GRADING SCALE | FL | IF | VVS | VS | SI | I |
| | FLAWLESS INTERNALLY FLAWLESS | VERY VERY SLIGHTLY INCLUDED | VERY SLIGHTLY INCLUDED | SLIGHTLY INCLUDED | INCLUDED | |

February 11, 2022

IGI Report Number

LG515207515

Description

LABORATORY GROWN DIAMOND

Shape and Cutting Style

ROUND BRILLIANT

Measurements

5.26 - 5.28 X 3.38 MM

GRADING RESULTS

Carat Weight

0.59 CARAT

Color Grade

D

Clarity Grade

VS 2

Cut Grade

VERY GOOD

February 11, 2022

IGI Report Number

LG515207515

Description

LABORATORY GROWN DIAMOND

Shape and Cutting Style

ROUND BRILLIANT

Measurements

5.26 - 5.28 X 3.38 MM

GRADING RESULTS

Carat Weight

0.59 CARAT

Color Grade

D

Clarity Grade

VS 2

Cut Grade

VERY GOOD

ADDITIONAL GRADING INFORMATION

Polish

VERY GOOD

Symmetry

VERY GOOD

Fluorescence

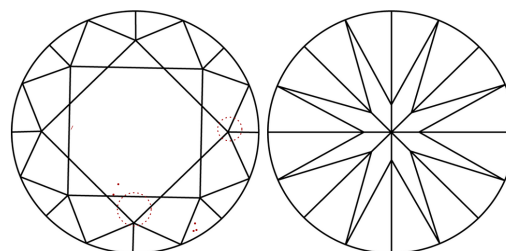
NONE

Inscription(s)

LABGROWN IGI LG515207515

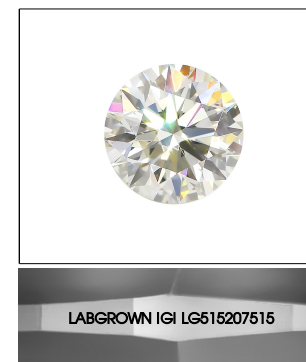
Comments: As Grown - No indication of post-growth treatment
This Laboratory Grown Diamond was created by High Pressure High Temperature (HPHT) growth process Type II

CLARITY CHARACTERISTICS



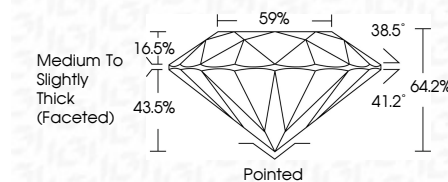
KEY TO SYMBOLS

Red symbols indicate internal characteristics.
Green symbols indicate external characteristics.



LASERSCRIBESM

Sample Image Used



ADDITIONAL GRADING INFORMATION

Polish

VERY GOOD

Symmetry

VERY GOOD

Fluorescence

NONE

Inscription(s)

LABGROWN IGI LG515207515

Comments: As Grown - No indication of post-growth treatment
This Laboratory Grown Diamond was created by High Pressure High Temperature (HPHT) growth process Type II



IGI



| | | | |
|-----------------|--------------------------|-----------------|--|
| IGI Report No | LG515207515 | 0.59 CARAT | D |
| Shape | ROUND BRILLIANT | Cut Grade | VS 2 |
| Measurements | 5.26 - 5.28 X 3.38 MM | Clarity Grade | VERY GOOD |
| Carat Weight | 0.59 | Depth | 64.2% |
| Color Grade | D | Table | 59% |
| Clarity Grade | VS 2 | Crown Height | 16.5% |
| Depth | 64.2% | Pavilion Height | 43.5% |
| Table | 59% | Total Depth | 64.2% |
| Crown Height | 16.5% | Culet | Pointed |
| Pavilion Height | 43.5% | Polish | VERY GOOD |
| Total Depth | 64.2% | Symmetry | VERY GOOD |
| Culet | Pointed | Fluorescence | NONE |
| Polish | VERY GOOD | Inscription(s) | LABGROWN IGI LG515207515 |
| Symmetry | VERY GOOD | Comments | As Grown - No indication of post-growth treatment This Laboratory Grown Diamond was created by High Pressure High Temperature (HPHT) growth process Type II |
| Fluorescence | NONE | | |
| Inscription(s) | LABGROWN IGI LG515207515 | | |