

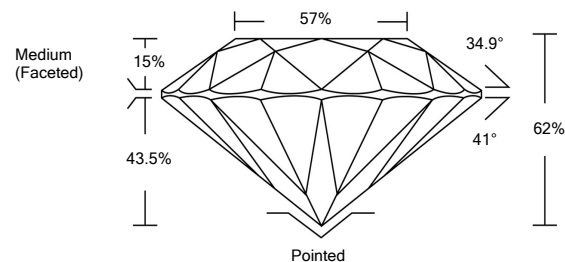


ELECTRONIC COPY

LABORATORY GROWN DIAMOND REPORT

LG515216698

PROPORTIONS



GRADING SCALES

COLOR GRADING SCALE	CL	NC	FT	VL	LT	
	COLORLESS D-F	NEAR COLORLESS G-J	FAINT K-M	VERY LIGHT N-R	LIGHT S-Z	
CLARITY (10x) GRADING SCALE	FL	IF	VVS	VS	SI	I
	FLAWLESS INTERNALLY FLAWLESS	VERY VERY SLIGHTLY INCLUDED	VERY SLIGHTLY INCLUDED	SLIGHTLY INCLUDED	INCLUDED	

February 9, 2022

IGI Report Number

LG515216698

Description

LABORATORY GROWN DIAMOND

Shape and Cutting Style

ROUND BRILLIANT

Measurements

8.22 - 8.27 X 5.11 MM

GRADING RESULTS

Carat Weight

2.12 CARATS

Color Grade

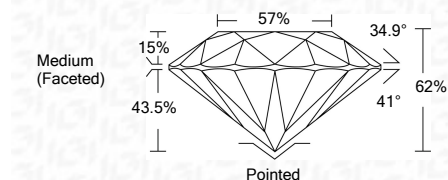
J

Clarity Grade

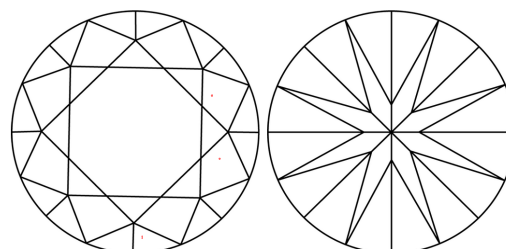
VVS 2

Cut Grade

IDEAL

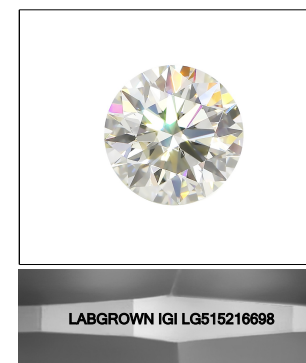


CLARITY CHARACTERISTICS



KEY TO SYMBOLS

Red symbols indicate internal characteristics.
Green symbols indicate external characteristics.



LASERSCRIBESM

Sample Image Used

ADDITIONAL GRADING INFORMATION

Polish

EXCELLENT

Symmetry

EXCELLENT

Fluorescence

NONE

Inscription(s)

LABGROWN IGI LG515216698

Comments: This Laboratory Grown Diamond was created by Chemical Vapor Deposition (CVD) growth process and may include post-growth treatment.
Type IIa

February 9, 2022

IGI Report Number

LG515216698

Description

LABORATORY GROWN DIAMOND

Shape and Cutting Style

ROUND BRILLIANT

Measurements

8.22 - 8.27 X 5.11 MM

GRADING RESULTS

Carat Weight

2.12 CARATS

Color Grade

J

Clarity Grade

VVS 2

Cut Grade

IDEAL

ADDITIONAL GRADING INFORMATION

Polish

EXCELLENT

Symmetry

EXCELLENT

Fluorescence

NONE

Inscription(s)

LABGROWN IGI LG515216698

Comments: This Laboratory Grown Diamond was created by Chemical Vapor Deposition (CVD) growth process and may include post-growth treatment.
Type IIa



IGI

February 9, 2022	IGI Report No. LG515216698	2.12 CARATS	J	Pointed
ROUND BRILLIANT	8.22 - 8.27 X 5.11 MM	VVS 2	IDEAL	EXCELLENT
Carat Weight	8.22 - 8.27 X 5.11 MM	62%	57%	EXCELLENT
Color Grade	Medium (Faceted)			
Clarity Grade				
Cut Grade				
Table				
Girdle				
Culet				
Polish				
Symmetry				
Fluorescence				
Inscription(s)				
Comments:	This Laboratory Grown Diamond was created by Chemical Vapor Deposition (CVD) growth process and may include post-growth treatment. Type IIa			