



**ELECTRONIC COPY**

**LABORATORY GROWN DIAMOND REPORT**

February 5, 2022  
 IGI Report Number **LG515216989**  
 Description **LABORATORY GROWN  
DIAMOND**  
 Shape and Cutting Style **CUSHION MODIFIED  
BRILLIANT**  
 Measurements **6.70 X 6.57 X 4.48 MM**

**GRADING RESULTS**

Carat Weight **1.67 CARAT**  
 Color Grade **E**  
 Clarity Grade **SI 2**

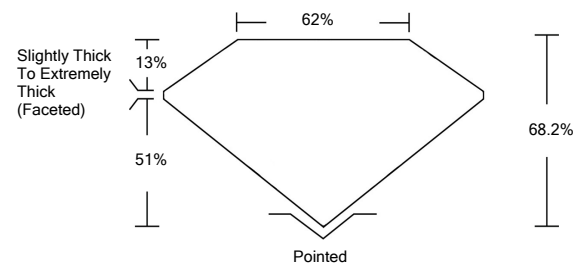
**ADDITIONAL GRADING INFORMATION**

Polish **EXCELLENT**  
 Symmetry **EXCELLENT**  
 Fluorescence **NONE**  
 Inscription(s) **LABGROWN IGI LG515216989**

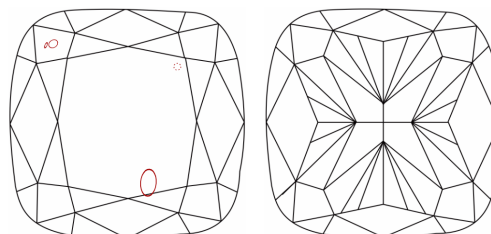
Comments: As Grown - No indication of post-growth treatment.  
 This Laboratory Grown Diamond was created by High Pressure High Temperature (HPHT) growth process. Type II

LG515216989

**PROPORTIONS**



**CLARITY CHARACTERISTICS**

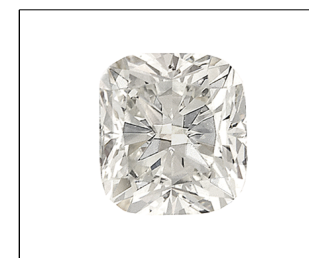


**KEY TO SYMBOLS**

Red symbols indicate internal characteristics.  
 Green symbols indicate external characteristics.

**GRADING SCALES**

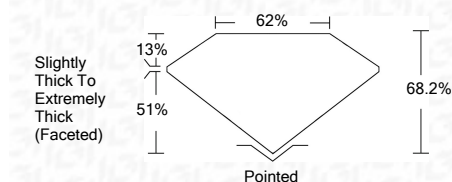
COLOR GRADING SCALE	CL	NC	FT	VL	LT	
	COLORLESS D-F	NEAR COLORLESS G-J	FAINT K-M	VERY LIGHT N-R	LIGHT S-Z	
CLARITY (10x) GRADING SCALE	FL	IF	VVS	VS	SI	I
	FLAWLESS INTERNALLY FLAWLESS	VERY VERY SLIGHTLY INCLUDED	VERY SLIGHTLY INCLUDED	SLIGHTLY INCLUDED	INCLUDED	



**LASERSCRIBE<sup>SM</sup>**

Sample Image Used

February 5, 2022  
 IGI Report Number **LG515216989**  
 Description **LABORATORY GROWN  
DIAMOND**  
 Shape and Cutting Style **CUSHION MODIFIED  
BRILLIANT**  
 Measurements **6.70 X 6.57 X 4.48 MM**  
**GRADING RESULTS**  
 Carat Weight **1.67 CARAT**  
 Color Grade **E**  
 Clarity Grade **SI 2**



**ADDITIONAL GRADING INFORMATION**

Polish **EXCELLENT**  
 Symmetry **EXCELLENT**  
 Fluorescence **NONE**  
 Inscription(s) **LABGROWN IGI LG515216989**

Comments: As Grown - No indication of post-growth treatment.  
 This Laboratory Grown Diamond was created by High Pressure High Temperature (HPHT) growth process. Type II



**IGI**



February 5, 2022  
 IGI Report No. LG515216989  
**CUSHION MODIFIED BRILLIANT**  
 6.70 X 6.57 X 4.48 MM  
 Carat Weight **1.67 CARAT**  
 Color Grade **E**  
 Clarity Grade **SI 2**  
 Depth **68.2%**  
 Table **62%**  
 Girdle **Slightly Thick To Extremely Thick (Faceted)**  
 Culet **Pointed**  
 Polish **EXCELLENT**  
 Symmetry **EXCELLENT**  
 Fluorescence **NONE**  
 Inscription(s) **LABGROWN IGI LG515216989**  
 Comments:  
 As Grown - No indication of post-growth treatment.  
 This Laboratory Grown Diamond was created by High Pressure High Temperature (HPHT) growth process. Type II