



ELECTRONIC COPY

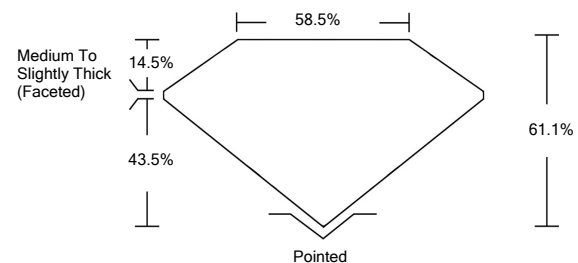
LABORATORY GROWN DIAMOND REPORT

| | |
|---------------------------------------|-------------------------------------|
| March 2, 2022 | |
| IGI Report Number | LG515224251 |
| Description | LABORATORY GROWN DIAMOND |
| Shape and Cutting Style | PEAR BRILLIANT |
| Measurements | 11.54 X 7.40 X 4.52 MM |
| GRADING RESULTS | |
| Carat Weight | 2.23 CARATS |
| Color Grade | H |
| Clarity Grade | VVS 2 |
| ADDITIONAL GRADING INFORMATION | |
| Polish | EXCELLENT |
| Symmetry | EXCELLENT |
| Fluorescence | NONE |
| Inscription(s) | LABGROWN IGI LG515224251 |

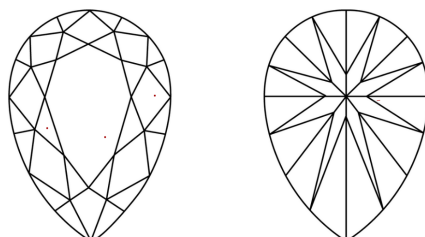
Comments: This Laboratory Grown Diamond was created by Chemical Vapor Deposition (CVD) growth process and may include post-growth treatment.
Type IIa

LG515224251

PROPORTIONS



CLARITY CHARACTERISTICS



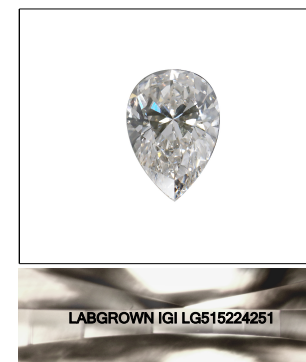
KEY TO SYMBOLS

Red symbols indicate internal characteristics.
Green symbols indicate external characteristics.

**LABORATORY GROWN
DIAMOND REPORT**

GRADING SCALES

| | | | | | | |
|-----------------------------|------------------------------|-----------------------------|------------------------|-------------------|-----------|---|
| COLOR GRADING SCALE | CL | NC | FT | VL | LT | |
| | COLORLESS D-F | NEAR COLORLESS G-J | FAINT K-M | VERY LIGHT N-R | LIGHT S-Z | |
| CLARITY (10x) GRADING SCALE | FL | IF | VVS | VS | SI | I |
| | FLAWLESS INTERNALLY FLAWLESS | VERY VERY SLIGHTLY INCLUDED | VERY SLIGHTLY INCLUDED | SLIGHTLY INCLUDED | INCLUDED | |

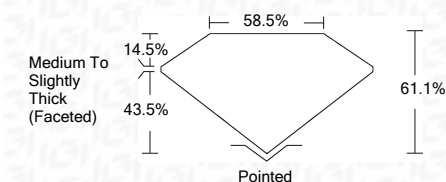


LASERSCRIBESM

Sample Image Used

LABORATORY GROWN DIAMOND REPORT

| | |
|-------------------------|-------------------------------------|
| March 2, 2022 | |
| IGI Report Number | LG515224251 |
| Description | LABORATORY GROWN DIAMOND |
| Shape and Cutting Style | PEAR BRILLIANT |
| Measurements | 11.54 X 7.40 X 4.52 MM |
| GRADING RESULTS | |
| Carat Weight | 2.23 CARATS |
| Color Grade | H |
| Clarity Grade | VVS 2 |



ADDITIONAL GRADING INFORMATION

| | |
|----------------|---------------------------------|
| Polish | EXCELLENT |
| Symmetry | EXCELLENT |
| Fluorescence | NONE |
| Inscription(s) | LABGROWN IGI LG515224251 |

Comments: This Laboratory Grown Diamond was created by Chemical Vapor Deposition (CVD) growth process and may include post-growth treatment.
Type IIa



IGI

| | |
|----------------------------|---|
| March 2, 2022 | |
| IGI Report No. LG515224251 | |
| PEAR BRILLIANT | |
| 11.54 X 7.40 X 4.52 MM | |
| Carat Weight | 2.23 CARATS |
| Color Grade | H |
| Clarity Grade | VVS 2 |
| Depth | 61.1% |
| Table | 58.5% |
| Girdle | Medium To Slightly Thick (Faceted) |
| Culet | Pointed |
| Polish | EXCELLENT |
| Symmetry | EXCELLENT |
| Fluorescence | NONE |
| Inscription(s) | LABGROWN IGI LG515224251 |
| Comments: | |

This Laboratory Grown Diamond was created by Chemical Vapor Deposition (CVD) growth process and may include post-growth treatment.
Type IIa

