



ELECTRONIC COPY

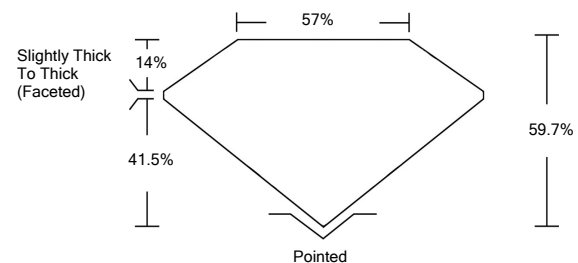
LABORATORY GROWN DIAMOND REPORT

March 28, 2022	
IGI Report Number	LG515224579
Description	LABORATORY GROWN DIAMOND
Shape and Cutting Style	HEART BRILLIANT
Measurements	9.06 X 9.97 X 5.95 MM
GRADING RESULTS	
Carat Weight	3.08 CARATS
Color Grade	FANCY INTENSE PINK
Clarity Grade	VS 2
ADDITIONAL GRADING INFORMATION	
Polish	EXCELLENT
Symmetry	VERY GOOD
Fluorescence	STRONG
Inscription(s)	LABGROWN IGI LG515224579

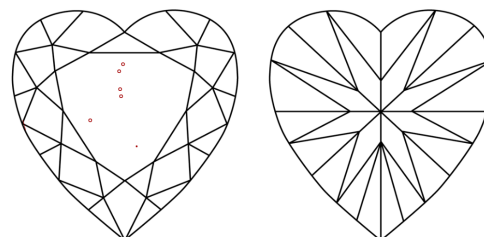
Comments: This Laboratory Grown Diamond was created by Chemical Vapor Deposition (CVD) growth process. Indications of post-growth treatment.

LG515224579

PROPORTIONS



CLARITY CHARACTERISTICS



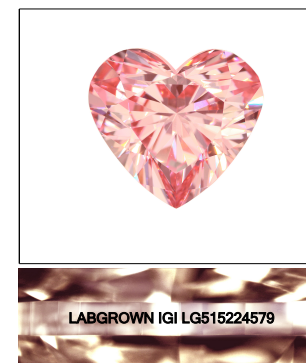
KEY TO SYMBOLS

Red symbols indicate internal characteristics.
Green symbols indicate external characteristics.

**LABORATORY GROWN
DIAMOND REPORT**

GRADING SCALES

COLOR GRADING SCALE	CL	NC	FT	VLT	LT	
	COLORLESS D-F	NEAR COLORLESS G-J	FAINT K-M	VERY LIGHT N-R	LIGHT S-Z	
CLARITY (10x) GRADING SCALE	FL	IF	VVS	VS	SI	I
	FLAWLESS INTERNALLY FLAWLESS	VERY VERY SLIGHTLY INCLUDED	VERY SLIGHTLY INCLUDED	SLIGHTLY INCLUDED	INCLUDED	

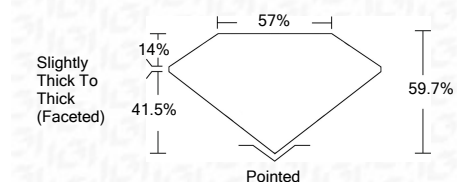


LASERSCRIBESM

Sample Image Used

LABORATORY GROWN DIAMOND REPORT

March 28, 2022	
IGI Report Number	LG515224579
Description	LABORATORY GROWN DIAMOND
Shape and Cutting Style	HEART BRILLIANT
Measurements	9.06 X 9.97 X 5.95 MM
GRADING RESULTS	
Carat Weight	3.08 CARATS
Color Grade	FANCY INTENSE PINK
Clarity Grade	VS 2



ADDITIONAL GRADING INFORMATION

Polish	EXCELLENT
Symmetry	VERY GOOD
Fluorescence	STRONG
Inscription(s)	LABGROWN IGI LG515224579

Comments: This Laboratory Grown Diamond was created by Chemical Vapor Deposition (CVD) growth process. Indications of post-growth treatment.



March 28, 2022	
IGI Report No. LG515224579	
HEART BRILLIANT	
9.06 X 9.97 X 5.95 MM	
Carat Weight	3.08 CARATS
Color Grade	FANCY INTENSE PINK
Clarity Grade	VS 2
Depth	59.7%
Table	14%
Girdle	Slightly Thick To Thick (Faceted)
Culet	Pointed
Polish	EXCELLENT
Symmetry	VERY GOOD
Fluorescence	STRONG
Inscription(s)	LABGROWN IGI LG515224579
Comments:	This Laboratory Grown Diamond was created by Chemical Vapor Deposition (CVD) growth process. Indications of post-growth treatment.

