



**ELECTRONIC COPY**

## LABORATORY GROWN DIAMOND REPORT

|                         |                             |
|-------------------------|-----------------------------|
| March 10, 2022          |                             |
| IGI Report Number       | LG515226246                 |
| Description             | LABORATORY GROWN<br>DIAMOND |
| Shape and Cutting Style | ROUND BRILLIANT             |
| Measurements            | 7.13 - 7.18 X 4.47 MM       |

## GRADING RESULTS

|               |            |
|---------------|------------|
| Carat Weight  | 1.39 CARAT |
| Color Grade   | G          |
| Clarity Grade | SI 1       |
| Cut Grade     | IDEAL      |

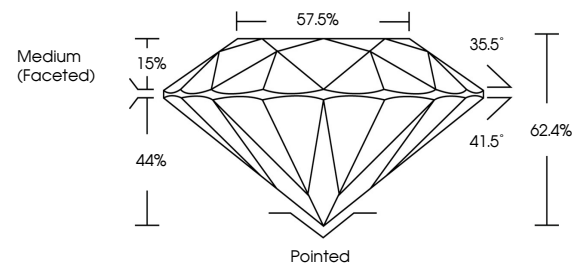
### ADDITIONAL GRADING INFORMATION

|                |                          |
|----------------|--------------------------|
| Polish         | EXCELLENT                |
| Symmetry       | EXCELLENT                |
| Fluorescence   | NONE                     |
| Inscription(s) | LABGROWN IGI LG515226246 |

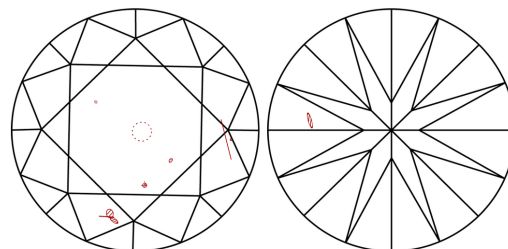
Comments: This Laboratory Grown Diamond was created by Chemical Vapor Deposition (CVD) growth process and may include post-growth treatment  
Type IIa

LG515226246

## PROPORTIONS



## CLARITY CHARACTERISTICS



## KEY TO SYMBOLS

Red symbols indicate internal characteristics.  
Green symbols indicate external characteristics.

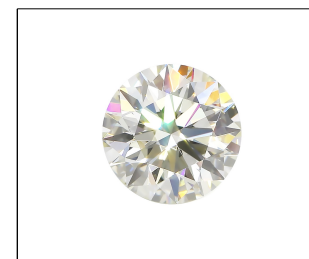
## GRADING SCALES

|                             |                              |    |                             |                        |                   |           |
|-----------------------------|------------------------------|----|-----------------------------|------------------------|-------------------|-----------|
| COLOR GRADING SCALE         | CL                           |    | NC                          | FT                     | VLT               | LT        |
|                             | COLORLESS D-F                |    | NEAR COLORLESS G-J          | FAINT K-M              | VERY LIGHT N-R    | LIGHT S-Z |
| CLARITY (10x) GRADING SCALE | FL                           | IF | VVS                         | VS                     | SI                | I         |
|                             | FLAWLESS INTERNALLY FLAWLESS |    | VERY VERY SLIGHTLY INCLUDED | VERY SLIGHTLY INCLUDED | SLIGHTLY INCLUDED | INCLUDED  |

The laboratory growdiamond described in this Report (Report) has been graded, tested, analyzed, examined and/or inscribed by International Gemological Institute (I.G.I.). A laboratory grown diamond is one that has essentially the same chemical, physical and optical properties as a naturally occurring diamond. The production of a grown diamond is a manufacturing process. I.G.I. employs and utilizes those techniques and equipment currently available to I.G.I., including, without limitation, 10X magnification, corrected triplet loupe, binocular microscope, master color comparison stones, non-contact optical spectrometer, and/or other instruments and/or processes as deemed appropriate by I.G.I. This Report includes advanced security features. A duly accredited gemologist or jeweler can advise you with respect to the importance of and interrelationship between cut, color, clarity and carat weight.

**THIS REPORT IS NEITHER A GUARANTEE, VALUATION, NOR APPRAISAL OF THE GEMSTONE DESCRIBED HEREIN. PLEASE REVIEW THE LIMITATIONS AND RESTRICTIONS SET FORTH ONLINE. FOR MORE INFORMATION, PLEASE VISIT [WWW.IGI.ORG](http://WWW.IGI.ORG) OR CALL 1-888-BUY-IGI.**

© INTERNATIONAL GEMOLOGICAL INSTITUTE, INC.



LABGROWN | G | LG515226246

LASERSCRIBE<sup>SM</sup>

Sample Image Used



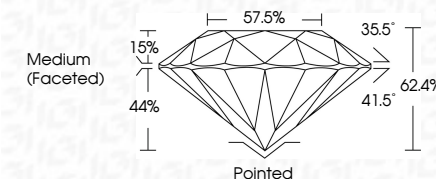
© IGI 2020, International Gemological Institute

FD - 10 20

THIS DOCUMENT WAS PRODUCED WITH THE FOLLOWING SECURITY MEASURES: SPECIAL DOCUMENT PAPER, INK SCREENS, WATERMARK BACKGROUND DESIGNS, HOLOGRAM AND OTHER SECURITY FEATURES NOT LISTED AND DO EXCEED DOCUMENT SECURITY INDUSTRY GUIDELINES

## LABORATORY GROWN DIAMOND REPORT

|                         |                             |
|-------------------------|-----------------------------|
| March 10, 2022          |                             |
| IGI Report Number       | LG515226246                 |
| Description             | LABORATORY GROWN<br>DIAMOND |
| Shape and Cutting Style | ROUND BRILLIANT             |
| Measurements            | 7.13 - 7.18 X 4.47 MM       |
| <b>GRADING RESULTS</b>  |                             |
| Carat Weight            | 1.39 CARAT                  |
| Color Grade             | G                           |
| Clarity Grade           | SI 1                        |
| Cut Grade               | IDEAL                       |



### ADDITIONAL GRADING INFORMATION

|                |                          |
|----------------|--------------------------|
| Polish         | EXCELLENT                |
| Symmetry       | EXCELLENT                |
| Fluorescence   | NONE                     |
| Inscription(s) | LABGROWN IGI LG515226246 |

Inscription(s) LABGROWN IGI LG515226246

Comments: This Laboratory Grown Diamond was created by Chemical Vapor Deposition (CVD) growth process and may include post-growth treatment  
Type IIa



|                 |   |
|-----------------|---|
| March 10, 2022  | IGI Report No. IGI516224246   |
| ROUND BRILLIANT |   |
| 1.39 CARAT      |   |
| Color Grade     | G   |
| Clarity Grade   | S11   |
| Cut Grade       | IDEAL   |
| Depth           | 62.4%   |
| Table           | 57.5%   |
| Grade           | Medium (Faceted)  |
| Culet           | Pointed   |
| Polish          | EXCELLENT   |
| Symmetry        | EXCELLENT   |
| Fluorescence    | NONE  |
| Inscriptions(s) | LABORATORY IGI<br>LSI 16224246  |
| Comments:       | This Laboratory Grown Diamond was created by Chemical Vapor Deposition (CVD) growth process and may include post-growth treatment |