



ELECTRONIC COPY

LABORATORY GROWN DIAMOND REPORT

| | |
|-------------------------|-----------------------------|
| October 4, 2022 | |
| IGI Report Number | LG515229112 |
| Description | LABORATORY GROWN DIAMOND |
| Shape and Cutting Style | ROUND BRILLIANT |
| Measurements | 8.22 - 8.26 X 5.09 MM |

GRADING RESULTS

| | |
|---------------|-------------|
| Carat Weight | 2.12 CARATS |
| Color Grade | I |
| Clarity Grade | SI 1 |
| Cut Grade | IDEAL |

ADDITIONAL GRADING INFORMATION

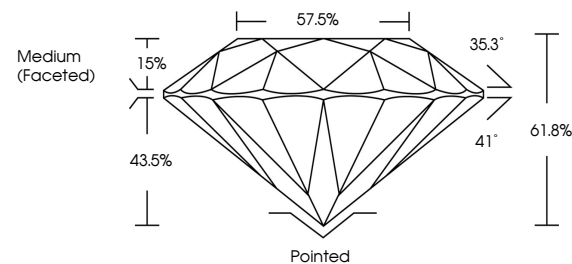
| | |
|--------------|-----------|
| Polish | EXCELLENT |
| Symmetry | EXCELLENT |
| Fluorescence | NONE |

Inscription(s) LABGROWN IGI LG515229112

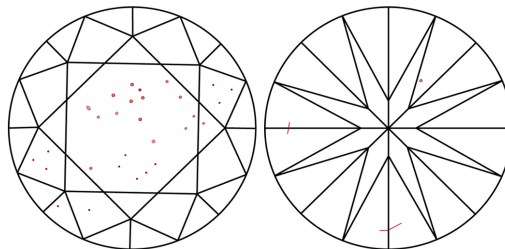
Comments: This Laboratory Grown Diamond was created by Chemical Vapor Deposition (CVD) growth process and may include post-growth treatment.
Type IIa

LG515229112

PROPORTIONS



CLARITY CHARACTERISTICS

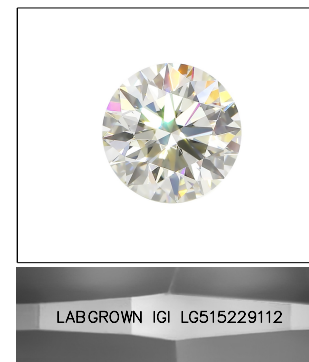


KEY TO SYMBOLS

Red symbols indicate internal characteristics.
Green symbols indicate external characteristics.

GRADING SCALES

| | | | | | | |
|-----------------------------|------------------------------|--------------------|-----------------------------|------------------------|-------------------|-----------|
| COLOR GRADING SCALE | CL | | NC | FT | VL | LT |
| | COLORLESS D-F | NEAR COLORLESS G-J | | FAINT K-M | VERY LIGHT N-R | LIGHT S-Z |
| CLARITY (10x) GRADING SCALE | FL | IF | VVS | VS | SI | I |
| | FLAWLESS INTERNALLY FLAWLESS | | VERY VERY SLIGHTLY INCLUDED | VERY SLIGHTLY INCLUDED | SLIGHTLY INCLUDED | INCLUDED |

LASERSCRIBESM

Sample Image Used



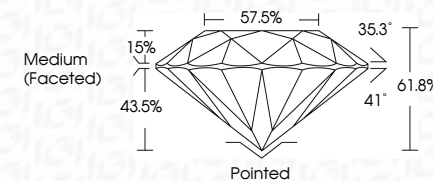
© IGI 2020, International Gemological Institute

FD - 10 20

www.igi.org

LABORATORY GROWN DIAMOND REPORT

| | |
|-------------------------|-----------------------------|
| October 4, 2022 | |
| IGI Report Number | LG515229112 |
| Description | LABORATORY GROWN DIAMOND |
| Shape and Cutting Style | ROUND BRILLIANT |
| Measurements | 8.22 - 8.26 X 5.09 MM |
| GRADING RESULTS | |
| Carat Weight | 2.12 CARATS |
| Color Grade | I |
| Clarity Grade | SI 1 |
| Cut Grade | IDEAL |



ADDITIONAL GRADING INFORMATION

| | |
|----------------|--------------------------|
| Polish | EXCELLENT |
| Symmetry | EXCELLENT |
| Fluorescence | NONE |
| Inscription(s) | LABGROWN IGI LG515229112 |

Inscription(s) LABGROWN IGI LG515229112

Comments: This Laboratory Grown Diamond was created by Chemical Vapor Deposition (CVD) growth process and may include post-growth treatment.
Type IIa



| | | |
|--|---------------------------------|--|
| October 4, 2022 | GI Report No LG515229112 | |
| | ROUND BRILLIANT | |
| 2.12 - 2.12 - 5.25 X 5.09 MM | | |
| Carat Weight | 2.12 CARATS | |
| Color Grade | I | |
| Clarity Grade | S I | |
| Cut Grade | IDEAL | |
| Depth | 61.5% | |
| Table | 57.5% | |
| Girdle | Medium (Faceted) | |
| Fluorescence | None | |
| Polish | Excellent | |
| Symmetry | Excellent | |
| Fluorescence (inception(s)) | None | |
| Comments: | LASER-GROWN (GI) LG515229112 | |
| <p>This Laboratory Grown Diamond was created by Chemical Vapor Deposition (CVD) and may include post-growth treatment.</p> <p>Type I-a</p> | | |

Comments:

This Laboratory Grown Diamond was created by Chemical Vapor Deposition (CVD) growth process and may include post-growth treatment.