



**INTERNATIONAL
GEMOLOGICAL
INSTITUTE**

LABORATORY GROWN DIAMOND REPORT

IGI LABORATORY GROWN DIAMOND IDENTIFICATION REPORT

February 16, 2022
 IGI Report Number LG515230408
 Description LABORATORY GROWN DIAMOND
 Shape and Cutting Style CUSHION BRILLIANT
 Measurements 6.06 X 5.28 X 3.70 MM

GRADING RESULTS

Carat Weight 0.91 CARAT
 Color Grade E
 Clarity Grade VS 1

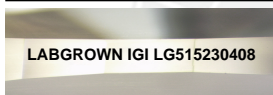
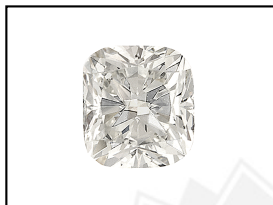
ADDITIONAL GRADING INFORMATION

Polish VERY GOOD
 Symmetry EXCELLENT
 Fluorescence NONE
 Inscription(s) LABGROWN IGI LG515230408

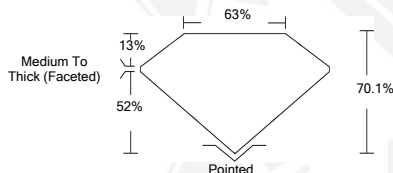
Comments: As Grown - No indication of post-growth treatment.
 This Laboratory Grown Diamond was created by High Pressure High
 Temperature (HPHT) growth process.
 Type II

**ELECTRONIC COPY LABORATORY GROWN
DIAMOND REPORT**

LG515230408



LASERSCRIBESM
Sample Images Used



**IGI LABORATORY GROWN
DIAMOND ID REPORT**

February 16, 2022
 IGI Report Number **LG515230408**
CUSHION BRILLIANT
6.06 X 5.28 X 3.70 MM
 Carat Weight 0.91 CARAT
 Color Grade E
 Clarity Grade VS 1
 Polish VERY GOOD
 Symmetry EXCELLENT
 Fluorescence NONE
 Inscription(s) LABGROWN IGI
 LG515230408

Comments: As Grown - No indication
 of post-growth treatment.
 This Laboratory Grown Diamond was
 created by High Pressure High
 Temperature (HPHT) growth process.
 Type II

**IGI LABORATORY GROWN
DIAMOND ID REPORT**

February 16, 2022
 IGI Report Number **LG515230408**
CUSHION BRILLIANT
6.06 X 5.28 X 3.70 MM
 Carat Weight 0.91 CARAT
 Color Grade E
 Clarity Grade VS 1
 Polish VERY GOOD
 Symmetry EXCELLENT
 Fluorescence NONE
 Inscription(s) LABGROWN IGI
 LG515230408

Comments: As Grown - No indication
 of post-growth treatment.
 This Laboratory Grown Diamond was
 created by High Pressure High
 Temperature (HPHT) growth process.
 Type II

THIS DOCUMENT WAS PRODUCED WITH THE FOLLOWING SECURITY MEASURES: SPECIAL DOCUMENT PAPER, INK SCREENS, WATERMARK, BACKGROUND DESIGN, HOLOGRAM AND OTHER SECURITY FEATURES NOT LISTED AND DO EXCEEDED DOCUMENT SECURITY INDUSTRY GUIDELINES.

For Terms & Conditions and to verify this report, please visit www.igi.org