



INTERNATIONAL GEMOLOGICAL INSTITUTE

ELECTRONIC COPY LABORATORY GROWN DIAMOND REPORT

LG515230454

LABORATORY GROWN DIAMOND REPORT

IGI LABORATORY GROWN DIAMOND IDENTIFICATION REPORT

February 14, 2022
IGI Report Number LG515230454
Description LABORATORY GROWN DIAMOND
Shape and Cutting Style PEAR BRILLIANT
Measurements 8.09 X 5.30 X 3.38 MM

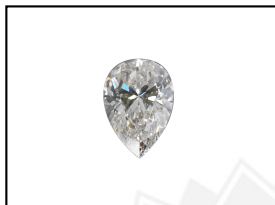
GRADING RESULTS

Carat Weight 0.90 CARAT
Color Grade H
Clarity Grade SI 1

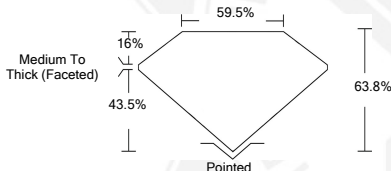
ADDITIONAL GRADING INFORMATION

Polish EXCELLENT
Symmetry EXCELLENT
Fluorescence NONE
Inscription(s) LABGROWN IGI LG515230454

Comments: This Laboratory Grown Diamond was created by Chemical Vapor Deposition (CVD) growth process and may include post-growth treatment.
Type IIa



LASERSCRIBESM
Sample Images Used



IGI LABORATORY GROWN DIAMOND ID REPORT

February 14, 2022
IGI Report Number LG515230454
PEAR BRILLIANT
8.09 X 5.30 X 3.38 MM
Carat Weight 0.90 CARAT
Color Grade H
Clarity Grade SI 1
Polish EXCELLENT
Symmetry EXCELLENT
Fluorescence NONE
Inscription(s) LABGROWN IGI LG515230454

Comments: This Laboratory Grown Diamond was created by Chemical Vapor Deposition (CVD) growth process and may include post-growth treatment.
Type IIa

IGI LABORATORY GROWN DIAMOND ID REPORT

February 14, 2022
IGI Report Number LG515230454
PEAR BRILLIANT
8.09 X 5.30 X 3.38 MM
Carat Weight 0.90 CARAT
Color Grade H
Clarity Grade SI 1
Polish EXCELLENT
Symmetry EXCELLENT
Fluorescence NONE
Inscription(s) LABGROWN IGI LG515230454

Comments: This Laboratory Grown Diamond was created by Chemical Vapor Deposition (CVD) growth process and may include post-growth treatment.
Type IIa



THIS DOCUMENT WAS PRODUCED WITH THE FOLLOWING SECURITY MEASURES: SPECIAL DOCUMENT PAPER, INK SCREENS, WATERMARK, BACKGROUND DESIGN, HOLOGRAM AND OTHER SECURITY FEATURES NOT LISTED AND DO EXCEED DOCUMENT SECURITY INDUSTRY GUIDELINES.

For Terms & Conditions and to verify this report, please visit www.igi.org