



**INTERNATIONAL
GEMOLOGICAL
INSTITUTE**

LABORATORY GROWN DIAMOND REPORT

IGI LABORATORY GROWN DIAMOND IDENTIFICATION REPORT

February 11, 2022
 IGI Report Number LG515233471
 Description LABORATORY GROWN DIAMOND
 Shape and Cutting Style OVAL BRILLIANT
 Measurements 7.25 X 5.53 X 3.50 MM

GRADING RESULTS

Carat Weight 0.91 CARAT
 Color Grade E
 Clarity Grade VS 2

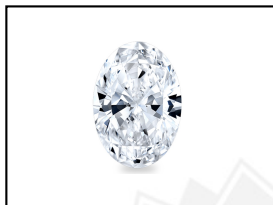
ADDITIONAL GRADING INFORMATION

Polish EXCELLENT
 Symmetry VERY GOOD
 Fluorescence NONE
 Inscription(s) LABGROWN IGI LG515233471

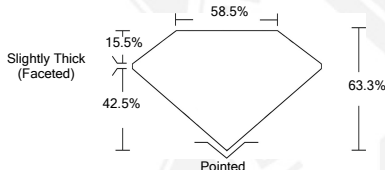
Comments: As Grown - No indication of post-growth treatment.
 This Laboratory Grown Diamond was created by High Pressure High Temperature (HPHT) growth process.
 Type II

**ELECTRONIC COPY LABORATORY GROWN
DIAMOND REPORT**

LG515233471



LASERSCRIBESM
Sample Images Used



**IGI LABORATORY GROWN
DIAMOND ID REPORT**

February 11, 2022
 IGI Report Number **LG515233471**
OVAL BRILLIANT
7.25 X 5.53 X 3.50 MM
 Carat Weight 0.91 CARAT
 Color Grade E
 Clarity Grade VS 2
 Polish EXCELLENT
 Symmetry VERY GOOD
 Fluorescence NONE
 Inscription(s) LABGROWN IGI
 LG515233471

Comments: As Grown - No indication of post-growth treatment.
 This Laboratory Grown Diamond was created by High Pressure High Temperature (HPHT) growth process.
 Type II

**IGI LABORATORY GROWN
DIAMOND ID REPORT**

February 11, 2022
 IGI Report Number **LG515233471**
OVAL BRILLIANT
7.25 X 5.53 X 3.50 MM
 Carat Weight 0.91 CARAT
 Color Grade E
 Clarity Grade VS 2
 Polish EXCELLENT
 Symmetry VERY GOOD
 Fluorescence NONE
 Inscription(s) LABGROWN IGI
 LG515233471

Comments: As Grown - No indication of post-growth treatment.
 This Laboratory Grown Diamond was created by High Pressure High Temperature (HPHT) growth process.
 Type II

THIS DOCUMENT WAS PRODUCED WITH THE FOLLOWING SECURITY MEASURES: SPECIAL DOCUMENT PAPER, INK SCREENS, WATERMARK, BACKGROUND DESIGN, HOLOGRAM AND OTHER SECURITY FEATURES NOT LISTED AND DO EXCEEDED DOCUMENT SECURITY INDUSTRY GUIDELINES.

For Terms & Conditions and to verify this report, please visit www.igi.org