

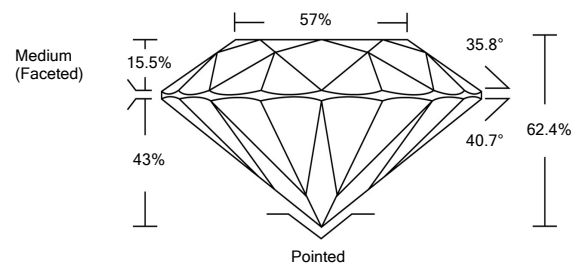


ELECTRONIC COPY

LABORATORY GROWN DIAMOND REPORT

LG516239215

PROPORTIONS



GRADING SCALES

COLOR GRADING SCALE	CL	NC	FT	VL	LT	
	COLORLESS D-F	NEAR COLORLESS G-J	FAINT K-M	VERY LIGHT N-R	LIGHT S-Z	
CLARITY (10x) GRADING SCALE	FL	IF	VVS	VS	SI	I
	FLAWLESS INTERNALLY FLAWLESS	VERY VERY SLIGHTLY INCLUDED	VERY SLIGHTLY INCLUDED	SLIGHTLY INCLUDED	INCLUDED	

February 10, 2022

IGI Report Number

LG516239215

Description

LABORATORY GROWN DIAMOND

Shape and Cutting Style

ROUND BRILLIANT

Measurements

7.82 - 7.87 X 4.90 MM

GRADING RESULTS

Carat Weight

1.87 CARAT

Color Grade

G

Clarity Grade

VS 1

Cut Grade

IDEAL

February 10, 2022

IGI Report Number

LG516239215

Description

LABORATORY GROWN DIAMOND

Shape and Cutting Style

ROUND BRILLIANT

Measurements

7.82 - 7.87 X 4.90 MM

GRADING RESULTS

Carat Weight

1.87 CARAT

Color Grade

G

Clarity Grade

VS 1

Cut Grade

IDEAL

ADDITIONAL GRADING INFORMATION

Polish

EXCELLENT

Symmetry

EXCELLENT

Fluorescence

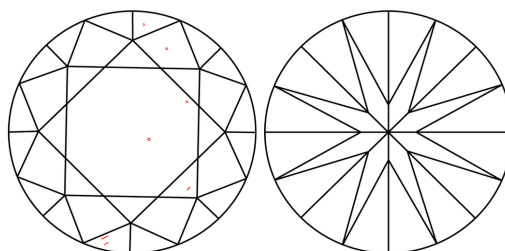
NONE

Inscription(s)

LABGROWN IGI LG516239215

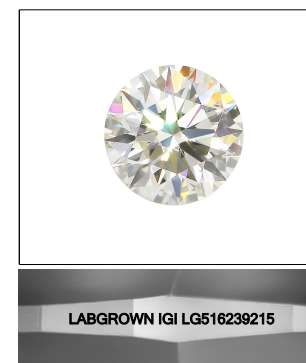
Comments: This Laboratory Grown Diamond was created by Chemical Vapor Deposition (CVD) growth process and may include post-growth treatment.
Type IIa

CLARITY CHARACTERISTICS



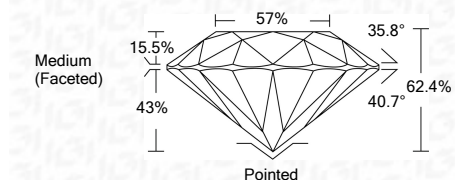
KEY TO SYMBOLS

Red symbols indicate internal characteristics.
Green symbols indicate external characteristics.



LASERSCRIBESM

Sample Image Used



ADDITIONAL GRADING INFORMATION

Polish

EXCELLENT

Symmetry

EXCELLENT

Fluorescence

NONE

Inscription(s)

LABGROWN IGI LG516239215

Comments: This Laboratory Grown Diamond was created by Chemical Vapor Deposition (CVD) growth process and may include post-growth treatment.
Type IIa



IGI

February 10, 2022	IGI Report No. LG516239215	1.87 CARAT	G	VS 1	IDEAL	62.4%	57%	Medium (Faceted)	Pointed	EXCELLENT	EXCELLENT	NONE	LABGROWN IGI LG516239215
IGI Report No. LG516239215	ROUND BRILLIANT	7.82 - 7.87 X 4.90 MM	Color Grade	Clarity Grade	Cut Grade	Depth	Table	Girdle	Culet	Polish	Symmetry	Fluorescence	Inscription(s)

Comments: This Laboratory Grown Diamond was created by Chemical Vapor Deposition (CVD) growth process and may include post-growth treatment.
Type IIa