

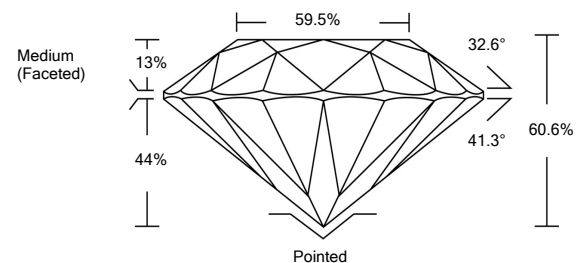


ELECTRONIC COPY

LABORATORY GROWN DIAMOND REPORT

LG516243971

PROPORTIONS



GRADING SCALES

COLOR GRADING SCALE	CL	NC	FT	VL	LT	
	COLORLESS D-F	NEAR COLORLESS G-J	FAINT K-M	VERY LIGHT N-R	LIGHT S-Z	
CLARITY (10x) GRADING SCALE	FL	IF	VVS	VS	SI	I
	FLAWLESS INTERNALLY FLAWLESS	VERY VERY SLIGHTLY INCLUDED	VERY SLIGHTLY INCLUDED	SLIGHTLY INCLUDED	INCLUDED	

February 16, 2022

IGI Report Number

LG516243971

Description

LABORATORY GROWN DIAMOND

Shape and Cutting Style

ROUND BRILLIANT

Measurements

8.34 - 8.38 X 5.07 MM

GRADING RESULTS

Carat Weight

2.16 CARATS

Color Grade

J

Clarity Grade

VS 1

Cut Grade

EXCELLENT

February 16, 2022

IGI Report Number

LG516243971

Description

LABORATORY GROWN DIAMOND

Shape and Cutting Style

ROUND BRILLIANT

Measurements

8.34 - 8.38 X 5.07 MM

GRADING RESULTS

Carat Weight

2.16 CARATS

Color Grade

J

Clarity Grade

VS 1

Cut Grade

EXCELLENT

ADDITIONAL GRADING INFORMATION

Polish

EXCELLENT

Symmetry

EXCELLENT

Fluorescence

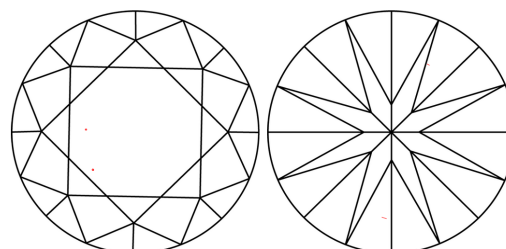
NONE

Inscription(s)

LABGROWN IGI LG516243971

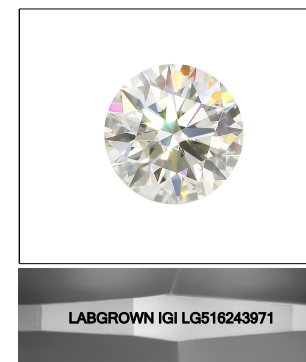
Comments: This Laboratory Grown Diamond was created by Chemical Vapor Deposition (CVD) growth process and may include post-growth treatment.
Type IIa

CLARITY CHARACTERISTICS



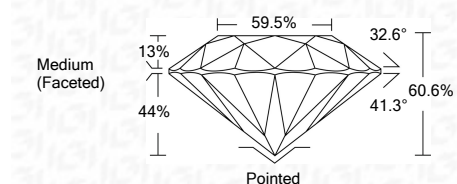
KEY TO SYMBOLS

Red symbols indicate internal characteristics.
Green symbols indicate external characteristics.



LASERSCRIBESM

Sample Image Used



ADDITIONAL GRADING INFORMATION

Polish

EXCELLENT

Symmetry

EXCELLENT

Fluorescence

NONE

Inscription(s)

LABGROWN IGI LG516243971

Comments: This Laboratory Grown Diamond was created by Chemical Vapor Deposition (CVD) growth process and may include post-growth treatment.
Type IIa



IGI

February 16, 2022	IGI Report No. LG516243971	2.16 CARATS	J
ROUND BRILLIANT	8.34 - 8.38 X 5.07 MM	EXCELLENT	VS 1
Carat Weight		60.6%	41.3%
Color Grade		59.5%	13%
Clarity Grade		Medium (Faceted)	
Cut Grade		Pointed	
Polish		EXCELLENT	
Symmetry		EXCELLENT	
Fluorescence		NONE	
Inscription(s)		LABGROWN IGI LG516243971	

Comments: This Laboratory Grown Diamond was created by Chemical Vapor Deposition (CVD) growth process and may include post-growth treatment.
Type IIa