

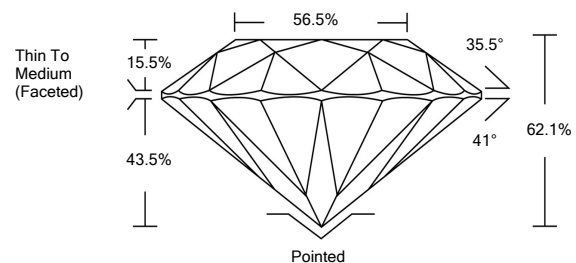


ELECTRONIC COPY

LABORATORY GROWN DIAMOND REPORT

LG516244132

PROPORTIONS



GRADING SCALES

COLOR GRADING SCALE	CL	NC	FT	VL	LT	
	COLORLESS D-F	NEAR COLORLESS G-J	FAINT K-M	VERY LIGHT N-R	LIGHT S-Z	
CLARITY (10x) GRADING SCALE	FL	IF	VVS	VS	SI	I
	FLAWLESS INTERNALLY FLAWLESS	VERY VERY SLIGHTLY INCLUDED	VERY SLIGHTLY INCLUDED	SLIGHTLY INCLUDED	INCLUDED	

February 17, 2022

IGI Report Number

LG516244132

Description

LABORATORY GROWN DIAMOND

Shape and Cutting Style

ROUND BRILLIANT

Measurements

8.35 - 8.39 X 5.20 MM

GRADING RESULTS

Carat Weight

2.21 CARATS

Color Grade

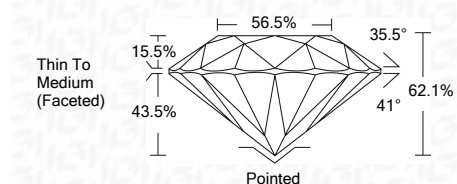
I

Clarity Grade

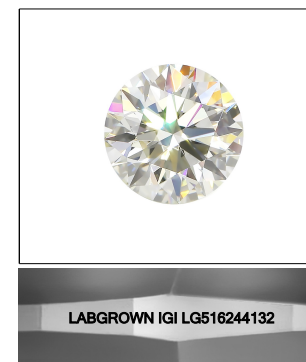
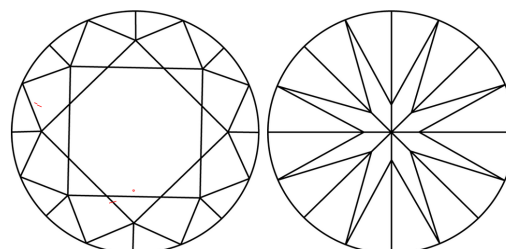
VS 1

Cut Grade

IDEAL



CLARITY CHARACTERISTICS



LASERSCRIBESM

Sample Image Used

KEY TO SYMBOLS

Red symbols indicate internal characteristics.
Green symbols indicate external characteristics.

ADDITIONAL GRADING INFORMATION

Polish

EXCELLENT

Symmetry

EXCELLENT

Fluorescence

NONE

Inscription(s)

LABGROWN IGI LG516244132

Comments: This Laboratory Grown Diamond was created by Chemical Vapor Deposition (CVD) growth process and may include post-growth treatment.
Type IIa

February 17, 2022

IGI Report Number

LG516244132

Description

LABORATORY GROWN DIAMOND

Shape and Cutting Style

ROUND BRILLIANT

Measurements

8.35 - 8.39 X 5.20 MM

GRADING RESULTS

Carat Weight

2.21 CARATS

Color Grade

I

Clarity Grade

VS 1

Cut Grade

IDEAL

ADDITIONAL GRADING INFORMATION

Polish

EXCELLENT

Symmetry

EXCELLENT

Fluorescence

NONE

Inscription(s)

LABGROWN IGI LG516244132

Comments: This Laboratory Grown Diamond was created by Chemical Vapor Deposition (CVD) growth process and may include post-growth treatment.
Type IIa



IGI

February 17, 2022	IGI Report No. LG516244132	2.21 CARATS	I
ROUND BRILLIANT	8.35 - 8.39 X 5.20 MM	VS 1	IDEAL
Carat Weight	Color Grade	Clarity Grade	Depth
8.35 - 8.39 X 5.20 MM	I	VS 1	62.1%
	Cut Grade	Table	Grids
	IDEAL	56.5%	Thin To Medium (Faceted)
			Pointed
			EXCELLENT
			EXCELLENT
			NONE
			LABGROWN IGI LG516244132
			Inscriptions(s)
			Comments: This Laboratory Grown Diamond was created by Chemical Vapor Deposition (CVD) growth process and may include post-growth treatment. Type IIa