

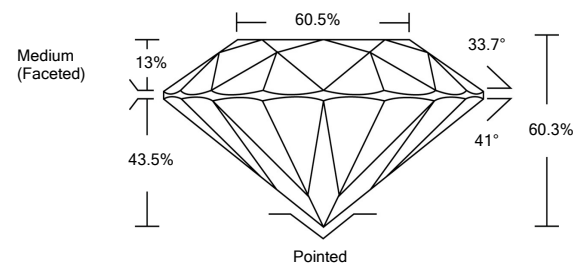


ELECTRONIC COPY

LABORATORY GROWN DIAMOND REPORT

LG516244156

PROPORTIONS



GRADING SCALES

| | | | | | | |
|-----------------------------|------------------------------|-----------------------------|------------------------|-------------------|-----------|---|
| COLOR GRADING SCALE | CL | NC | FT | VL | LT | |
| | COLORLESS D-F | NEAR COLORLESS G-J | FAINT K-M | VERY LIGHT N-R | LIGHT S-Z | |
| CLARITY (10x) GRADING SCALE | FL | IF | VVS | VS | SI | I |
| | FLAWLESS INTERNALLY FLAWLESS | VERY VERY SLIGHTLY INCLUDED | VERY SLIGHTLY INCLUDED | SLIGHTLY INCLUDED | INCLUDED | |

February 18, 2022

IGI Report Number

LG516244156

Description

LABORATORY GROWN DIAMOND

Shape and Cutting Style

ROUND BRILLIANT

Measurements

8.17 - 8.21 X 4.94 MM

GRADING RESULTS

Carat Weight

2.03 CARATS

Color Grade

J

Clarity Grade

VS 1

Cut Grade

EXCELLENT

February 18, 2022

IGI Report Number

LG516244156

Description

LABORATORY GROWN DIAMOND

Shape and Cutting Style

ROUND BRILLIANT

Measurements

8.17 - 8.21 X 4.94 MM

GRADING RESULTS

Carat Weight

2.03 CARATS

Color Grade

J

Clarity Grade

VS 1

Cut Grade

EXCELLENT

ADDITIONAL GRADING INFORMATION

Polish

EXCELLENT

Symmetry

EXCELLENT

Fluorescence

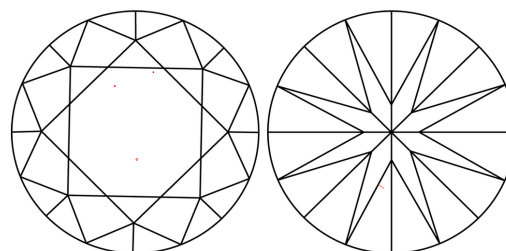
NONE

Inscription(s)

LABGROWN IGI LG516244156

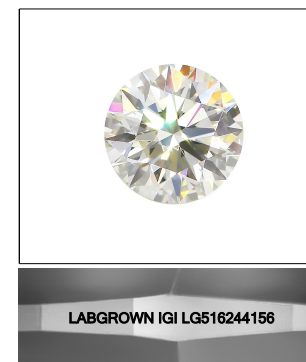
Comments: This Laboratory Grown Diamond was created by Chemical Vapor Deposition (CVD) growth process and may include post-growth treatment.
Type IIa

CLARITY CHARACTERISTICS



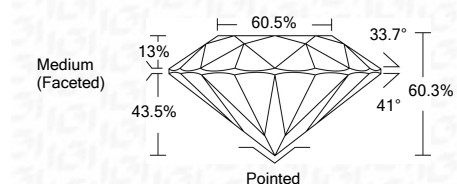
KEY TO SYMBOLS

Red symbols indicate internal characteristics.
Green symbols indicate external characteristics.



LASERSCRIBESM

Sample Image Used



ADDITIONAL GRADING INFORMATION

Polish

EXCELLENT

Symmetry

EXCELLENT

Fluorescence

NONE

Inscription(s)

LABGROWN IGI LG516244156

Comments: This Laboratory Grown Diamond was created by Chemical Vapor Deposition (CVD) growth process and may include post-growth treatment.
Type IIa



IGI

| | | | | | | | | | | | | | |
|----------------------------|----------------------------|-----------------------|-------------|------|-----------|-------|-------|------------------|---------|-----------|-----------|------|--------------------------|
| February 18, 2022 | IGI Report No. LG516244156 | 2.03 CARATS | J | VS 1 | EXCELLENT | 60.3% | 60.5% | Medium (Faceted) | Pointed | EXCELLENT | EXCELLENT | NONE | LABGROWN IGI LG516244156 |
| IGI Report No. LG516244156 | ROUND BRILLIANT | 8.17 - 8.21 X 4.94 MM | 2.03 CARATS | VS 1 | EXCELLENT | 60.3% | 60.5% | Medium (Faceted) | Pointed | EXCELLENT | EXCELLENT | NONE | LABGROWN IGI LG516244156 |
| IGI Report No. LG516244156 | ROUND BRILLIANT | 8.17 - 8.21 X 4.94 MM | 2.03 CARATS | VS 1 | EXCELLENT | 60.3% | 60.5% | Medium (Faceted) | Pointed | EXCELLENT | EXCELLENT | NONE | LABGROWN IGI LG516244156 |

Comments: This Laboratory Grown Diamond was created by Chemical Vapor Deposition (CVD) growth process and may include post-growth treatment.
Type IIa