

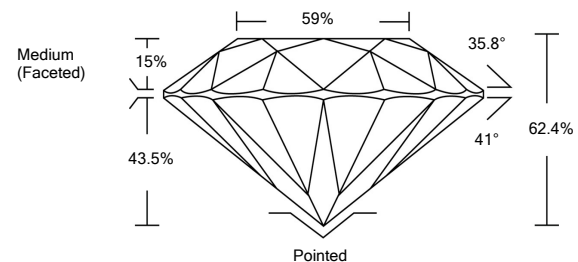


**ELECTRONIC COPY**

**LABORATORY GROWN DIAMOND REPORT**

LG516244374

**PROPORTIONS**



**GRADING SCALES**

COLOR GRADING SCALE	CL	NC	FT	VL	LT	
	COLORLESS D-F	NEAR COLORLESS G-J	FAINT K-M	VERY LIGHT N-R	LIGHT S-Z	
CLARITY (10x) GRADING SCALE	FL	IF	VVS	VS	SI	I
	FLAWLESS INTERNALLY FLAWLESS	VERY VERY SLIGHTLY INCLUDED	VERY SLIGHTLY INCLUDED	SLIGHTLY INCLUDED	INCLUDED	

February 18, 2022

IGI Report Number

**LG516244374**

Description

**LABORATORY GROWN DIAMOND**

Shape and Cutting Style

**ROUND BRILLIANT**

Measurements

**8.06 - 8.09 X 5.04 MM**

**GRADING RESULTS**

Carat Weight

**2.05 CARATS**

Color Grade

**I**

Clarity Grade

**SI 1**

Cut Grade

**IDEAL**

February 18, 2022

IGI Report Number

**LG516244374**

Description

**LABORATORY GROWN DIAMOND**

Shape and Cutting Style

**ROUND BRILLIANT**

Measurements

**8.06 - 8.09 X 5.04 MM**

**GRADING RESULTS**

Carat Weight

**2.05 CARATS**

Color Grade

**I**

Clarity Grade

**SI 1**

Cut Grade

**IDEAL**

**ADDITIONAL GRADING INFORMATION**

Polish

**EXCELLENT**

Symmetry

**EXCELLENT**

Fluorescence

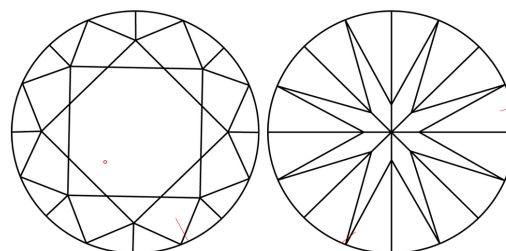
**NONE**

Inscription(s)

**LABGROWN IGI LG516244374**

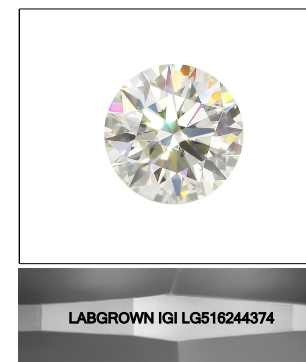
Comments: This Laboratory Grown Diamond was created by Chemical Vapor Deposition (CVD) growth process and may include post-growth treatment.  
Type IIa

**CLARITY CHARACTERISTICS**



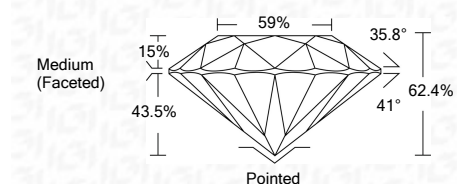
**KEY TO SYMBOLS**

Red symbols indicate internal characteristics.  
Green symbols indicate external characteristics.



**LASERSCRIBE<sup>SM</sup>**

Sample Image Used



**ADDITIONAL GRADING INFORMATION**

Polish

**EXCELLENT**

Symmetry

**EXCELLENT**

Fluorescence

**NONE**

Inscription(s)

**LABGROWN IGI LG516244374**

Comments: This Laboratory Grown Diamond was created by Chemical Vapor Deposition (CVD) growth process and may include post-growth treatment.  
Type IIa



**IGI**

February 18, 2022	IGI Report No. LG516244374	2.05 CARATS	I	SI 1	IDEAL	62.4%	59%	Medium (Faceted)	Pointed	EXCELLENT	EXCELLENT	NONE	LABGROWN IGI LG516244374
IGI Report No. LG516244374	ROUND BRILLIANT	8.06 - 8.09 X 5.04 MM	2.05 CARATS	SI 1	IDEAL	62.4%	59%	Medium (Faceted)	Pointed	EXCELLENT	EXCELLENT	NONE	LABGROWN IGI LG516244374
Color Grade													
Clarity Grade													
Cut Grade													
Depth													
Table													
Girdle													
Culet													
Polish													
Symmetry													
Fluorescence													
Inscription(s)													

Comments: This Laboratory Grown Diamond was created by Chemical Vapor Deposition (CVD) growth process and may include post-growth treatment.  
Type IIa