



ELECTRONIC COPY

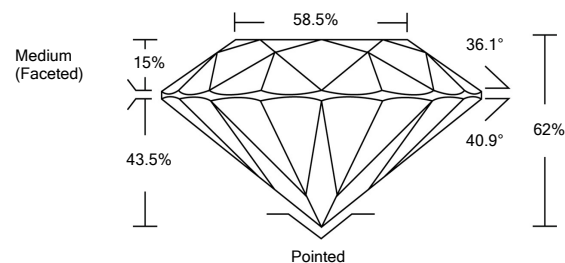
LG516244387

LABORATORY GROWN DIAMOND REPORT

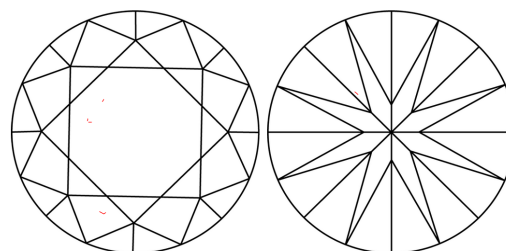
GRADING SCALES

COLOR GRADING SCALE	CL	NC	FT	VL	LT	
	COLORLESS D-F	NEAR COLORLESS G-J	FAINT K-M	VERY LIGHT N-R	LIGHT S-Z	
CLARITY (10x) GRADING SCALE	FL	IF	VVS	VS	SI	I
	FLAWLESS INTERNALLY FLAWLESS	VERY VERY SLIGHTLY INCLUDED	VERY SLIGHTLY INCLUDED	SLIGHTLY INCLUDED	INCLUDED	

PROPORTIONS

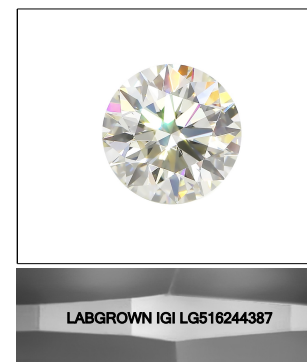


CLARITY CHARACTERISTICS



KEY TO SYMBOLS

Red symbols indicate internal characteristics. Green symbols indicate external characteristics.



LASERSCRIBE SM Sample Image Used

February 18, 2022

IGI Report Number LG516244387

Description LABORATORY GROWN DIAMOND

Shape and Cutting Style ROUND BRILLIANT

Measurements 8.67 - 8.70 X 5.39 MM

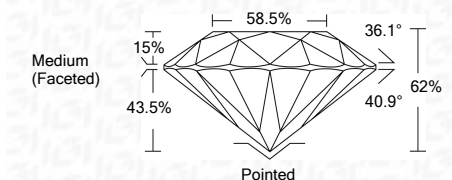
GRADING RESULTS

Carat Weight 2.51 CARATS

Color Grade J

Clarity Grade VS 1

Cut Grade IDEAL



ADDITIONAL GRADING INFORMATION

Polish EXCELLENT

Symmetry EXCELLENT

Fluorescence NONE

Inscription(s) LABGROWN IGI LG516244387

Comments: This Laboratory Grown Diamond was created by Chemical Vapor Deposition (CVD) growth process and may include post-growth treatment. Type IIa

February 18, 2022

IGI Report Number LG516244387

Description LABORATORY GROWN DIAMOND

Shape and Cutting Style ROUND BRILLIANT

Measurements 8.67 - 8.70 X 5.39 MM

GRADING RESULTS

Carat Weight 2.51 CARATS

Color Grade J

Clarity Grade VS 1

Cut Grade IDEAL

ADDITIONAL GRADING INFORMATION

Polish EXCELLENT

Symmetry EXCELLENT

Fluorescence NONE

Inscription(s) LABGROWN IGI LG516244387

Comments: This Laboratory Grown Diamond was created by Chemical Vapor Deposition (CVD) growth process and may include post-growth treatment. Type IIa



IGI

February 18, 2022	IGI Report No. LG516244387	2.51 CARATS	J
ROUND BRILLIANT	8.67 - 8.70 X 5.39 MM	IDEAL	VS 1
Color Grade	2.51 CARATS	62%	62%
Clarity Grade	VS 1	58.5%	58.5%
Cut Grade	IDEAL	Medium (Faceted)	Medium (Faceted)
Polish	EXCELLENT	Pointed	Pointed
Symmetry	EXCELLENT	None	None
Fluorescence	NONE	None	None
Inscription(s)	LABGROWN IGI LG516244387	None	None

Comments: This Laboratory Grown Diamond was created by Chemical Vapor Deposition (CVD) growth process and may include post-growth treatment. Type IIa