

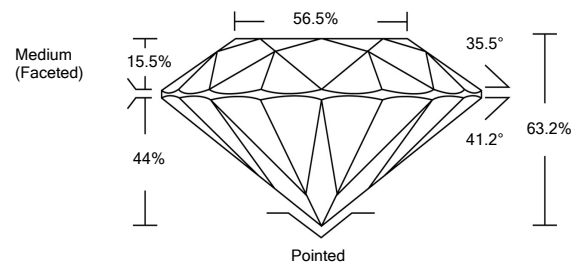


ELECTRONIC COPY

LABORATORY GROWN DIAMOND REPORT

LG516256525

PROPORTIONS



GRADING SCALES

COLOR GRADING SCALE	CL	NC	FT	VLT	LT	
	COLORLESS D-F	NEAR COLORLESS G-J	FAINT K-M	VERY LIGHT N-R	LIGHT S-Z	
CLARITY (10x) GRADING SCALE	FL	IF	VVS	VS	SI	I
	FLAWLESS INTERNALLY FLAWLESS	VERY VERY SLIGHTLY INCLUDED	VERY SLIGHTLY INCLUDED	SLIGHTLY INCLUDED	INCLUDED	

February 26, 2022

IGI Report Number

LG516256525

Description

LABORATORY GROWN DIAMOND

Shape and Cutting Style

ROUND BRILLIANT

Measurements

8.63 - 8.70 X 5.48 MM

GRADING RESULTS

Carat Weight

2.54 CARATS

Color Grade

J

Clarity Grade

VS 1

Cut Grade

EXCELLENT

February 26, 2022

IGI Report Number

LG516256525

Description

LABORATORY GROWN DIAMOND

Shape and Cutting Style

ROUND BRILLIANT

Measurements

8.63 - 8.70 X 5.48 MM

GRADING RESULTS

Carat Weight

2.54 CARATS

Color Grade

J

Clarity Grade

VS 1

Cut Grade

EXCELLENT

ADDITIONAL GRADING INFORMATION

Polish

EXCELLENT

Symmetry

EXCELLENT

Fluorescence

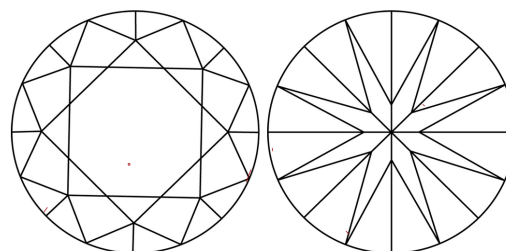
NONE

Inscription(s)

LABGROWN IGI LG516256525

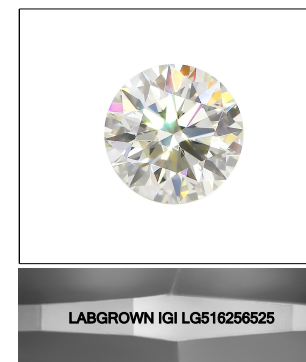
Comments: This Laboratory Grown Diamond was created by Chemical Vapor Deposition (CVD) growth process and may include post-growth treatment.
Type IIa

CLARITY CHARACTERISTICS



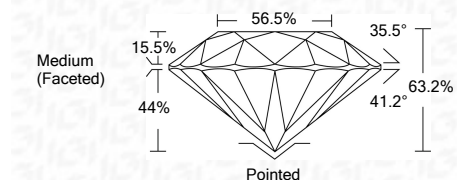
KEY TO SYMBOLS

Red symbols indicate internal characteristics.
Green symbols indicate external characteristics.



LASERSCRIBESM

Sample Image Used



ADDITIONAL GRADING INFORMATION

Polish

EXCELLENT

Symmetry

EXCELLENT

Fluorescence

NONE

Inscription(s)

LABGROWN IGI LG516256525

Comments: This Laboratory Grown Diamond was created by Chemical Vapor Deposition (CVD) growth process and may include post-growth treatment.
Type IIa



IGI

February 26, 2022	IGI Report No. LG516256525	2.54 CARATS	J
ROUND BRILLIANT	8.63 - 8.70 X 5.48 MM	EXCELLENT	VS 1
Color Grade	Carat Weight	Depth	Table
J	2.54 CARATS	63.2%	56.5%
EXCELLENT	Medium (Faceted)		
EXCELLENT			
EXCELLENT			
NONE			
LABGROWN IGI			
LG516256525			

Comments: This Laboratory Grown Diamond was created by Chemical Vapor Deposition (CVD) growth process and may include post-growth treatment.
Type IIa