



ELECTRONIC COPY

LABORATORY GROWN DIAMOND REPORT

May 13, 2022
IGI Report Number LG516261193
Description LABORATORY GROWN DIAMOND
Shape and Cutting Style ROUND BRILLIANT
Measurements 9.66 - 9.70 X 5.85 MM

GRADING RESULTS

Carat Weight 3.41 CARATS
Color Grade G
Clarity Grade VVS 2
Cut Grade IDEAL

ADDITIONAL GRADING INFORMATION

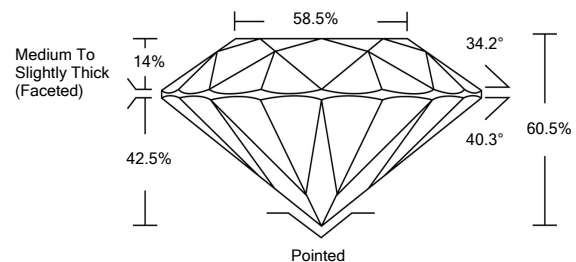
Polish EXCELLENT
Symmetry EXCELLENT
Fluorescence NONE

Inscription(s) LABGROWN IGI LG516261193

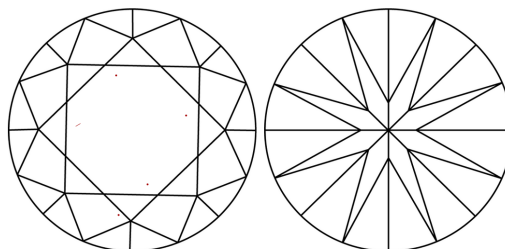
Comments: This Laboratory Grown Diamond was created by Chemical Vapor Deposition (CVD) growth process and may include post-growth treatment. Type IIa

LG516261193

PROPORTIONS



CLARITY CHARACTERISTICS

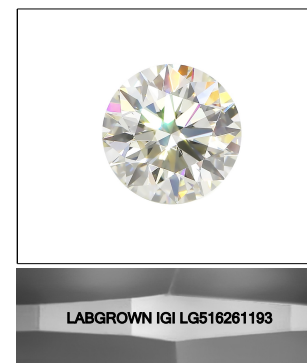


KEY TO SYMBOLS

Red symbols indicate internal characteristics.
Green symbols indicate external characteristics.

GRADING SCALES

Table with 5 columns for Color Grading Scale (CL, NC, FT, VLT, LT) and 5 columns for Clarity (10x) Grading Scale (FL, IF, VVS, VS, SI, I). Colorless D-F, Near Colorless G-J, Faint K-M, Very Light N-R, Light S-Z. Flawless Internally Flawless, Very Very Slightly Included, Very Slightly Included, Slightly Included, Included.

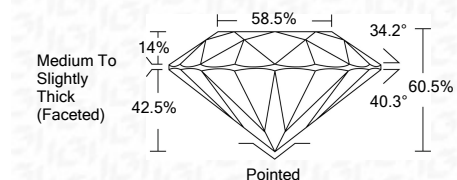


LASERSCRIBE SM
Sample Image Used

May 13, 2022
IGI Report Number LG516261193
Description LABORATORY GROWN DIAMOND
Shape and Cutting Style ROUND BRILLIANT
Measurements 9.66 - 9.70 X 5.85 MM

GRADING RESULTS

Carat Weight 3.41 CARATS
Color Grade G
Clarity Grade VVS 2
Cut Grade IDEAL



ADDITIONAL GRADING INFORMATION

Polish EXCELLENT
Symmetry EXCELLENT
Fluorescence NONE

Inscription(s) LABGROWN IGI LG516261193

Comments: This Laboratory Grown Diamond was created by Chemical Vapor Deposition (CVD) growth process and may include post-growth treatment. Type IIa



IGI

Summary table of report details: IGI Report No. LG516261193, ROUND BRILLIANT, 9.66 - 9.70 X 5.85 MM, 3.41 CARATS, G, VVS 2, IDEAL, 60.5%, 58.5%, Medium To Slightly Thick (Faceted), Polished, EXCELLENT, EXCELLENT, NONE, LABGROWN IGI LG516261193.