



**ELECTRONIC COPY**

## LABORATORY GROWN DIAMOND REPORT

February 15, 2022	
IGI Report Number	LG516273844
Description	LABORATORY GROWN DIAMOND
Shape and Cutting Style	SQUARE CUSHION BRILLIANT
Measurements	7.35 X 7.20 X 4.93 MM
GRADING RESULTS	
Carat Weight	2.02 CARATS
Color Grade	D
Clarity Grade	VVS 2
ADDITIONAL GRADING INFORMATION	
Polish	EXCELLENT
Symmetry	EXCELLENT
Fluorescence	NONE
Inscription(s)	LABGROWN IGI LG516273844

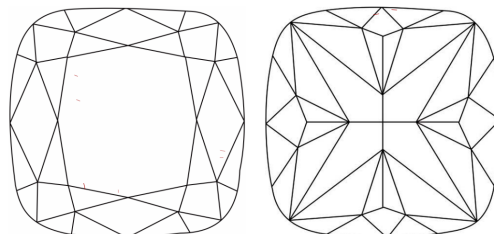
Comments: As Grown - No indication of post-growth treatment.

This Laboratory Grown Diamond was created by High Pressure High Temperature (HPHT) growth process.  
Type II

Diagram illustrating the proportions of a diamond-shaped cross-section (likely a bullet or projectile) with the following dimensions:

- Top width: 66%
- Left side height (from top to bottom): 52%
- Left side height (from top to middle): 12.5%
- Right side height (from top to bottom): 68.5%
- Bottom shape: Pointed

## CLARITY CHARACTERISTICS



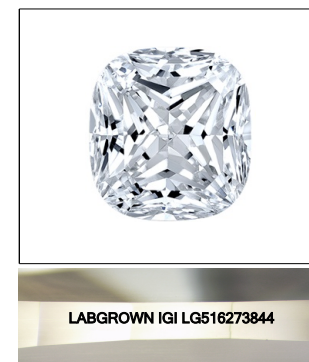
## KEY TO SYMBOLS

Red symbols indicate internal characteristics.  
Green symbols indicate external characteristics.

LABORATORY GROWN  
DIAMOND REPORT

## GRADING SCALES

COLOR GRADING SCALE	CL		NC		FT		VLT		LT	
	COLORLESS D-F		NEAR COLORLESS G-J		FAINT K-M		VERY LIGHT N-R		LIGHT S-Z	
CLARITY (10x) GRADING SCALE	FL	IF	VVS		VS		SI		I	
	FLAWLESS INTERNALLY FLAWLESS		VERY VERY SLIGHTLY INCLUDED		VERY SLIGHTLY INCLUDED		SLIGHTLY INCLUDED		INCLUDED	

LASERSCRIBE<sup>SM</sup>

Sample Image Used

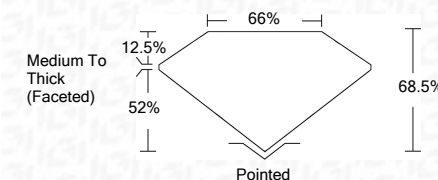


© IGI 2020, International Gemological Institute

FD - 10 20

## LABORATORY GROWN DIAMOND REPORT

February 15, 2022	
IGI Report Number	LG516273844
Description	LABORATORY GROWN DIAMOND
Shape and Cutting Style	SQUARE CUSHION BRILLIANT
Measurements	7.35 X 7.20 X 4.93 MM
GRADING RESULTS	
Carat Weight	2.02 CARATS
Color Grade	D
Clarity Grade	VVS 2



### ADDITIONAL GRADING INFORMATION

Polish	EXCELLENT
Symmetry	EXCELLENT
Fluorescence	NONE
Inscription(s)	LABGROWN IGI LG516273844

Comments: As Grown - No indication of post-growth treatment.  
This Laboratory Grown Diamond was created by High Pressure High Temperature (HPHT) growth process.  
Type II



<b>Date:</b>	February 15, 2022
<b>GIA Report No.</b>	LGI618273944
<b>SQUARE CUSHION BRILLIANT</b>	
<b>Weight</b>	2.02 CARATS
<b>Color Grade</b>	D
<b>Clarity Grade</b>	VVS 2
<b>Length</b>	68.5%
<b>Width</b>	68%
<b>Depth</b>	Medium To Thick (Faceted)
<b>Culet</b>	Poished
<b>Symmetry</b>	EXCELLENT
<b>Fluorescence</b>	EXCELLENT
<b>Description(s)</b>	NONE
<b>Comments:</b>	LABGROWN GIG LG518273944
<b>As Grown -</b>	No indication of post-growth treatment.
<b>This Laboratory Crown Diamond was created by High Pressure High Temperature (HPHT) growth process.</b>	

**As Grown - No indication of post-growth treatment.**