

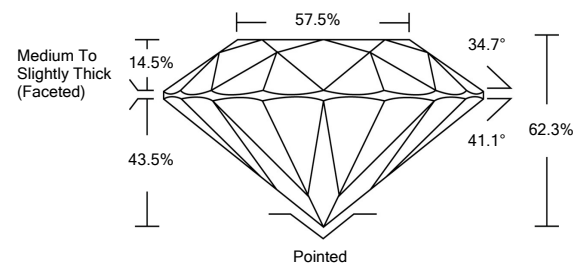


**ELECTRONIC COPY**

**LABORATORY GROWN DIAMOND REPORT**

LG516275071

**PROPORTIONS**



**GRADING SCALES**

|                             |                              |                             |                        |                   |           |   |
|-----------------------------|------------------------------|-----------------------------|------------------------|-------------------|-----------|---|
| COLOR GRADING SCALE         | CL                           | NC                          | FT                     | VL                | LT        |   |
|                             | COLORLESS D-F                | NEAR COLORLESS G-J          | FAINT K-M              | VERY LIGHT N-R    | LIGHT S-Z |   |
| CLARITY (10x) GRADING SCALE | FL                           | IF                          | VVS                    | VS                | SI        | I |
|                             | FLAWLESS INTERNALLY FLAWLESS | VERY VERY SLIGHTLY INCLUDED | VERY SLIGHTLY INCLUDED | SLIGHTLY INCLUDED | INCLUDED  |   |

February 28, 2022

IGI Report Number

**LG516275071**

Description

**LABORATORY GROWN DIAMOND**

Shape and Cutting Style

**ROUND BRILLIANT**

Measurements

**6.45 - 6.49 X 4.03 MM**

**GRADING RESULTS**

Carat Weight

**1.04 CARAT**

Color Grade

**E**

Clarity Grade

**VVS 2**

Cut Grade

**IDEAL**

February 28, 2022

IGI Report Number

**LG516275071**

Description

**LABORATORY GROWN DIAMOND**

Shape and Cutting Style

**ROUND BRILLIANT**

Measurements

**6.45 - 6.49 X 4.03 MM**

**GRADING RESULTS**

Carat Weight

**1.04 CARAT**

Color Grade

**E**

Clarity Grade

**VVS 2**

Cut Grade

**IDEAL**

**ADDITIONAL GRADING INFORMATION**

Polish

**EXCELLENT**

Symmetry

**EXCELLENT**

Fluorescence

**NONE**

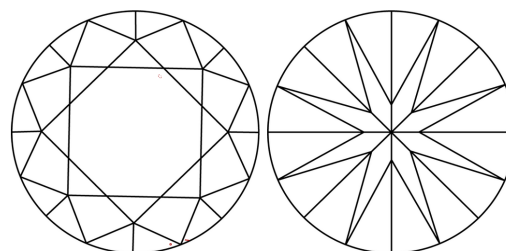
Inscription(s)

**LABGROWN IGI LG516275071**

Comments: As Grown - No indication of post-growth treatment.

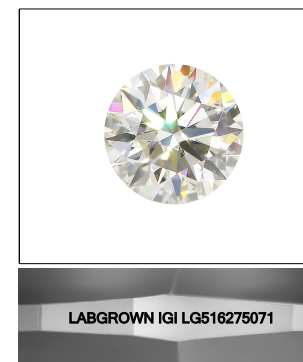
This Laboratory Grown Diamond was created by High Pressure High Temperature (HPHT) growth process. Type II

**CLARITY CHARACTERISTICS**



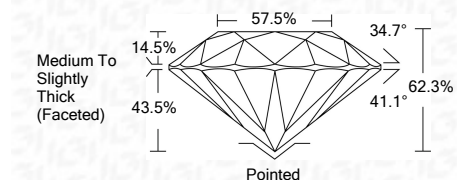
**KEY TO SYMBOLS**

Red symbols indicate internal characteristics.  
Green symbols indicate external characteristics.



**LASERSCRIBE<sup>SM</sup>**

Sample Image Used



**ADDITIONAL GRADING INFORMATION**

Polish

**EXCELLENT**

Symmetry

**EXCELLENT**

Fluorescence

**NONE**

Inscription(s)

**LABGROWN IGI LG516275071**

Comments: As Grown - No indication of post-growth treatment.  
This Laboratory Grown Diamond was created by High Pressure High Temperature (HPHT) growth process. Type II



**IGI**

|                   |                                    |                |                                    |  |
|-------------------|------------------------------------|----------------|------------------------------------|--|
| February 28, 2022 | IGI Report No. LG516275071         | 1.04 CARAT     | E                                  | Pointed  |
| ROUND BRILLIANT   | 6.45 - 6.49 X 4.03 MM              | VVS 2          | IDEAL                              | EXCELLENT  |
| Carat Weight      | 6.45 - 6.49 X 4.03 MM              | Cut Grade      | 62.3%                              | EXCELLENT  |
| Color Grade       | 1.04 CARAT                         | Depth          | 57.5%                              | NONE   |
| Clarity Grade     | VVS 2                              | Girdle         | Medium To Slightly Thick (Faceted) | LABGROWN IGI LG516275071   |
| Cut Grade         | IDEAL                              | Culet          | Pointed                            | Comments: As Grown - No indication of post-growth treatment.   |
| Depth             | 62.3%                              | Polish         | EXCELLENT                          | This Laboratory Grown Diamond was created by High Pressure High Temperature (HPHT) growth process. Type II |
| Table             | 57.5%                              | Symmetry       | EXCELLENT                          |  |
| Girdle            | Medium To Slightly Thick (Faceted) | Fluorescence   | NONE                               |  |
| Culet             | Pointed                            | Inscription(s) | LABGROWN IGI LG516275071           |  |
| Polish            | EXCELLENT                          |                |                                    |  |
| Symmetry          | EXCELLENT                          |                |                                    |  |
| Fluorescence      | NONE                               |                |                                    |  |
| Inscription(s)    | LABGROWN IGI LG516275071           |                |                                    |  |